

# FALL INTO \$AVINGS!



## BLUM 563 SERIES UNDERMOUNTS / LOCKING DEVICES



### TANDEM plus BLUMOTION 563H Series



- Four-dimensional adjustment
- Elongated holes for depth adjustment
- Bottom mount holes for 18" and 21" slides
- 100 lb static/90 lb dynamic load capacity
- Full extension concealed runner
- For face frame or frameless cabinets
- BLUMOTION soft-closing
- 13mm (1/2") to 16mm (5/8") drawer thickness
- Made in the USA with Domestic and European components

Item #	Length	Box Qty	Price 48-287	Price 288+
B563H4570B	18"	6	<b>\$17.08</b>	<b>\$16.28</b>
B563H5330B	21"	6	<b>\$17.68</b>	<b>\$16.78</b>

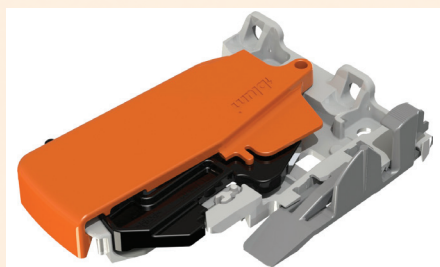


### TANDEM plus BLUMOTION 563. Series

- Four-dimensional adjustment
- Elongated holes for depth adjustment
- Bottom mount holes
- 100 lb static/90 lb dynamic load capacity
- Full extension concealed runners
- Frameless or blocked-out face frame cabinets
- BLUMOTION soft closing
- TANDEM smooth running action
- 13mm (1/2") to 16mm (5/8") drawer thickness
- Made in the USA with Domestic and European components

Item #	Length	Box Qty	Price 48-287	Price 288+
B563.4570B	18"	6	<b>\$16.18</b>	<b>\$15.58</b>
B563.5330B	21"	6	<b>\$16.68</b>	<b>\$15.78</b>

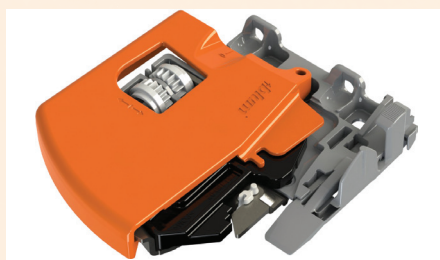
NOTE: For 563 (.) series runners, rear brackets and sockets cannot be used. Cabinet sides must be blocked-out flush with the inside of the frame.



### Tandem Locking Devices 1801 Series

- One right and one left required per drawer
- For use with standard applications
- Captive right device and self-aligning left device
- Self-adjusting drawer length tolerance
- Zinc die-cast with synthetic, spring-loaded release levers
- Minimum inside drawer width 4-7/8" (124mm)
- Height adjustment +1/8" (3mm)

Item #	Description	Box Qty	Price Each
BT51.1801R	Right Front Locking Device	100	<b>\$0.69</b>
BT51.1801L	Left Front Locking Device	100	<b>\$0.69</b>



### Tandem Locking Devices 1901 Series

- One right and one left required per drawer
- Captive right and self-aligning left device
- Steel base with synthetic, spring-loaded release levers
- Height adjustment +1/8" (3mm)
- Minimum inside drawer width 6-11/16" (170mm)
- Self-adjusting drawer length tolerance
- Side-to-side adjustment +/- 1/16" (1.5mm)

Item #	Description	Box Qty	Price Each
BT51.1901R	Right Front Locking Device	100	<b>\$1.34</b>
BT51.1901L	Left Front Locking Device	100	<b>\$1.34</b>

Page 1 of 2

**Offer valid: 9/22 - 9/30/2025.** Please reference promo code **LP2296** when placing an order with Customer Service.  
For online orders, enter promo code **LP2296** in the promo code field of the shopping cart.

**Würth Louis and Company • (800) 422-4389 • [www.wurthlac.com](http://www.wurthlac.com)**

**OPT-OUT INFORMATION:** You may request Würth Louis and Company not to send any future advertisements to a telephone facsimile machine or machines. Failure to comply with such a request in the form prescribed by law, within the shortest time prescribed by law not to exceed 30 days, is unlawful. If you wish to discontinue future fax advertisements from Würth Louis and Company, Please send your request by Email to: [creditdepartment@wurthlac.com](mailto:creditdepartment@wurthlac.com), or by Fax to: 800-944-7494 or by Calling: 800-422-4389 option 2. Your request should specify the telephone numbers or numbers of each telephone facsimile machine to which the request relates.

# FALL INTO SAVINGS!



## REV-A-SHELF WASTE PULL OUTS

### 53WC Series Double Trash Pull-Outs



- Designed for 15" base cabinets
- Double 35 and 50 qt. polymer containers
- Full-extension, progressive roller, 90 lb. rated, concealed slides with soft-close
- Powder-coated wire frame
- Mounts to cabinet floor
- Pre-assembled door mounting brackets
- Rear storage bin with all single units

Item #	Dimensions	Description	Minimum Cabinet Opening	Designed for Cabinet	Price
RV53WC-1835SCDM217	14-3/8"W x 22-1/4"D x 19"H	Double 35 qt., Silver	15"	Base 18"	<b>\$112.29</b>
RV53WC-2150SCDM217	14-3/4"W x 22-1/4"D x 22-7/8"H	Double 50 qt., Silver	15"	Full Height Base 18"	<b>\$115.09</b>



### 4WCSC Series Double Trash Pull-Outs

- Features a maple wood dovetail constructed carriage
- Full-Extension Blum Soft-Close Slides
- 110 Lb. Weight Rating
- Includes maple wood carriage, slides, trash bin(s), and door mounting brackets

Item #	Description	Product Dimensions	Price
RV4WCSC-1835DM	Double 35QT, Silver Bins	15"W x 21-3/4"D x 20-3/8"H	<b>\$223.49</b>
RV4WCSC-2150DM	Double 50QT, Silver Bins	18"W x 21-3/4"D x 24-1/4"H	<b>\$244.69</b>



### 5349 Double Trash Pull-Outs

- Features a sleek anodized aluminum carriage
- Full Extension Soft-Close Slides
- 85 Lb. Weight Rating
- Includes aluminum carriage, slides, trash bin(s) and door mounting brackets

Item #	Description	Product Dimensions	Price
RV5349-18DM-WH	Double 35QT, White Bins	14-13/16"W x 21-7/8"D x 19-1/4"H	<b>\$196.89</b>
RV5349-2150DM-2	Double 50QT, White Bins	14-13/16"W x 22-1/8"D x 22-15/16"H	<b>\$209.29</b>



### Durasein White Solid Surface

**Durasein**

- 30" x 144" x 1/2"
- 100% Acrylic
- 100% Silica Free
- Greenguard Gold Certified

Color	Item #	Price 1-9	Price 10+	Adhesive Item #	Matching Adhesive	Price
Arctic White	DS1001-50-72	\$209.00	<b>\$199.00</b>	DSPC1001	Arctic White	<b>\$27.50</b>

Page 2 of 2

**Offer valid: 9/22 - 9/30/2025.** Please reference promo code **LP2296** when placing an order with Customer Service.  
For online orders, enter promo code **LP2296** in the promo code field of the shopping cart.

**Würth Louis and Company • (800) 422-4389 • www.wurthlac.com**

**OPT-OUT INFORMATION:** You may request Würth Louis and Company not to send any future advertisements to a telephone facsimile machine or machines. Failure to comply with such a request in the form prescribed by law, within the shortest time prescribed by law not to exceed 30 days, is unlawful. If you wish to discontinue future fax advertisements from Würth Louis and Company, Please send your request by Email to: creditdepartment@wurthlac.com, or by Fax to: 800-944-7494 or by Calling: 800-422-4389 option 2. Your request should specify the telephone numbers or numbers of each telephone facsimile machine to which the request relates.