



# WÜRTH LOUIS AND COMPANY

Vauth-Sagel Cabinet &  
Closet Hanging Rail System

**SMALL COMPONENTS  
WITH A HUGE BENEFIT.**

THE PERFECT  
FIT FOR YOUR  
CABINET

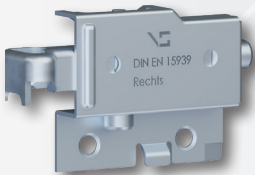


 VAUTH  
SAGEL

# VS TOP Hang 40 Hanging Rail System



**Left Hanger**



**Right Hanger**



- 300lb load capacity
- ANSI/BIFMA Rated
- 100% steel with anti-corrosion zinc coating
- Visible installation with low space requirements
- Quick and precise 3D adjustment
- Screw fixing prevents accidental unscrewing
- Cover caps available in different colors and silver metalized

Cabinet Hangers			
Description	Left Hand Item #	Right Hand Item #	Price Each
Zinc Cabinet Hangers	VSTH40HANGER-L	VSTH40HANGER-R	\$3.59

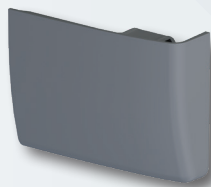
Cover Caps			
Description	Left Hand Item #	Right Hand Item #	Price Each
White Cover Cap	VSTH40CAP-WH-L	VSTH40CAP-WH-R	\$0.19
Pearl White/Almond Cover Cap	VSTH40CAP-PW-L	VSTH40CAP-PW-R	\$0.19
Gray Cover Cap	VSTH40CAP-GR-L	VSTH40CAP-GR-R	\$0.19
Brown Cover Cap	VSTH40CAP-BR-L	VSTH40CAP-BR-R	\$0.19
Black Cover Cap	VSTH40CAP-BL-L	VSTH40CAP-BL-R	\$0.19



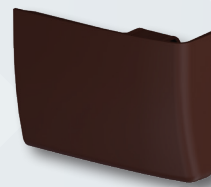
**White**



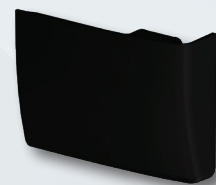
**Pearl White/Almond**



**Gray**



**Brown**



**Black**



**Suspension Rail**



**White Suspension Rail Covercap**

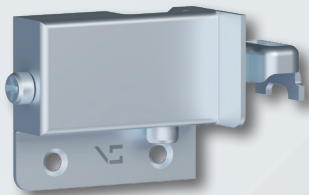
Suspension Rail		
Description	Item #	Price Each
93" Steel Suspension Rail	VSTHSUSRAIL-ZC	\$7.29
93" White Suspension Rail Covercap	VSTHSUSRAILCAP-WH	\$4.19

**Offer valid: 5/22 - 7/31/2026.** Please reference promo code **LP2349** when placing an order with Customer Service. For online orders, enter promo code **LP2349** in the promo code field of the shopping cart.

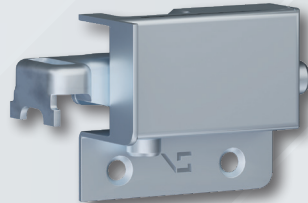
## VS TOP Hang 26 Hanging Rail System



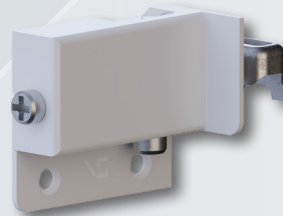
- 300lb load capacity
- ANSI/BIFMA Rated
- 100% steel with anti-corrosion zinc coating
- Visible installation with low space requirements
- Quick and precise 3D adjustment



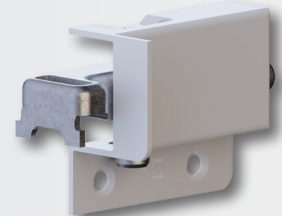
**Left Cabinet  
Hanger - Nickel**



**Right Cabinet  
Hanger - Nickel**



**Left Cabinet  
Hanger - White**



**Right Cabinet  
Hanger - White**

### Cabinet Hangers

Description	Left Hand Item #	Right Hand Item #	Price Each
Nickel Cabinet Hangers	VSTH26HANGER-NI-L	VSTH26HANGER-NI-R	\$2.79
White Cabinet Hangers	VSTH26HANGER-WH-L	VSTH26HANGER-WH-R	\$2.79



### Suspension Rail



**White Suspension Rail Covercap**

### Suspension Rail

Description	Item #	Price Each
93" Steel Suspension Rail	VSTHSUSRAIL-ZC	\$7.29
93" White Suspension Rail Covercap	VSTHSUSRAILCAP-WH	\$4.19

**Offer valid: 5/22 - 7/31/2026.** Please reference promo code **LP2349** when placing an order with Customer Service. For online orders, enter promo code **LP2349** in the promo code field of the shopping cart.



**FEATURES**



**3D adjustment**



**Up to 300 lbs per set load capacity**



**Made completely of steel and anticorrosion zinc coating**



**Automated installation possible**



**For steel rail, hook and wood rail suspension with hooks**



**Made in Germany**

**Offer valid: 5/22 - 7/31/2026.** Please reference promo code **LP2349** when placing an order with Customer Service. For online orders, enter promo code **LP2349** in the promo code field of the shopping cart.



# WÜRTH LOUIS AND COMPANY

## BUILT FOR THOSE WHO BUILD THE WORLD™

**Würth Louis and Company**

895 Columbia Street  
Brea, CA 92821  
(714) 529-1771  
(800) 422-4389  
Fax: (800) 446-9452  
www.wurthlac.com

**Other locations:**

Anaheim, CA  
Benton, AR  
Boise, ID  
Denver, CO  
Grand Prairie, TX  
Houston, TX  
Huntington Park, CA

Idaho Falls, ID  
Las Vegas, NV  
Oklahoma City, OK  
Phoenix, AZ  
Portland, OR  
Post Falls, ID  
Salt Lake City, UT

San Antonio, TX  
San Marcos, CA  
St. George, UT  
Sumner, WA  
West Jordan, UT