



WÜRTH

WÜRTH LOUIS AND COMPANY

KARRAN[®]

Sink and Faucet
Catalog



Table of Contents

3
Stainless Steel
Kitchen Sinks,
Workstation
Series



4 - 8
Stainless Steel
Kitchen Sinks,
Edge & Elite
Series



9 - 11
Stainless Steel
Kitchen Sinks,
Undermount &
Novaro Series



11 - 13
Stainless Steel
Kitchen Sinks,
Profile & Select
Series



14
Quartz Kitchen
Sinks,
Workstation
Series



15 - 18
Quartz Kitchen
Sinks,
Undermount
Series



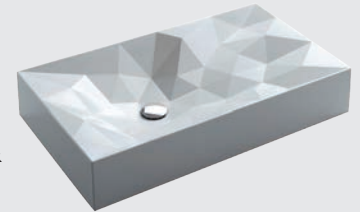
19 - 20
Quartz Kitchen
Sinks, Top
Mount Series



21
Acrylic Kitchen
Sinks,
Undermount
Series



22 - 23
Quartz & Acrylic
Bathroom Vessel
Sinks, Sternhagen &
Quattro Matte



24 - 28
Vitreous China
Bathroom Sinks,
Valera Collection



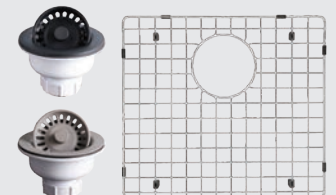
29 - 32
Kitchen Faucets



33 - 34
Bathroom Faucets



35 - 37
Basket Strainers,
Disposal
Flanges, Sink
Grids



38 - 39
Pop-Up Drains &
Fabrication
Accessories



KARRAN

WORKSTATION Series

Undermount Stainless Steel Workstation Sink Kits

- Sinks have built-in ledges and included accessories which makes this sink series the most functional workspace
- Designed to be undermounted into all granite, quartz and solid surface countertops
- Made from T304, 16-gauge stainless steel
- 18/10 chrome-nickel makeup guards against oxidation and rust
- Finish: Soft Satin Brushed Stainless Steel
- Kit includes: (1) sink, (1) faucet, (1) wood cutting board, (1) basket strainer, (1) bottom grid, (1) colander plate, (1) roll up drying rack and (1) colander



A



B



C

Kit includes:

Faucet

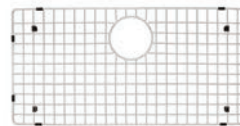
(22" tall single lever stainless steel commercial faucet)



Wood cutting board



Basket strainer



Bottom grid



Colander plate



Roll up drying rack



Colander

Item #	Style	Outside Dimensions	Inside Bowl Dimensions
A KARWS45PK2	Large Single Bowl w/Apron	33" x 20-5/8" / 9"Apron Depth	30" x 17" x 10"
B KARWS37PK2	Large Single Bowl	32" x 19"	30" x 17" x 10"
C KARWS40-PK2	Large/Small Bowls (60/40 Split)	32" x 19"	LH-16" x 17" x 10" / RH-13" x 17" x 10"

NOTE: All dimensions are approximate to +/- 1/4" as listed in this catalog. Karran states that no cutting or modifying of the countertop should occur before having the sink on hand.

EDGE 500 Series

Seamless Undermount Stainless Steel Sinks

- Designed to be seamlessly undermounted into all laminate and solid surface countertops
- Designed to be flush mounted into all granite and quartz countertops
- Handmade construction from T304, 18-gauge stainless steel
- 18/10 chrome-nickel makeup guards against oxidation and rust



A



B



C



D



E



F



ADA Compliant



G



H



I



ADA Compliant



J



K

	Item #	Style	Outside Dimensions	Inside Bowl Dimensions
A	KARE560R	Large/Small Bowl	32" x 21-1/2"	Left: 17" x 19" x 9" / Right: 11" x 16" x 9"
B	KARE560L	Small/Large Bowl	32" x 21-1/2"	Left: 11" x 16" x 9" / Right: 17" x 19" x 9"
C	KARE550	Double Equal Bowl	33-7/8" x 19-1/2"	Left: 15" x 17" x 9" / Right: 15" x 17" x 9"
D	KARE540	Large Single Bowl	32-1/2" x 19-1/2"	30" x 17" x 9"
E	KARE528	Extra Deep Laundry Bowl	23-1/2" x 19-1/2"	21" x 17" x 14"
F	KARE525	ADA Single Bowl	23-1/2" x 19-1/2"	21" x 17" x 5-1/2"
G	KARE520	Single Bowl	23-1/2" x 19-1/2"	21" x 17" x 9"
H	KARE510	Bar/Prep Bowl	15-1/2" x 19-1/2"	13" x 17" x 9"
I	KARE505D	ADA Vanity Bowl	18-1/8" x 15-7/8"	15-3/4" x 13-3/8" x 5-1/2"
Waste Chutes				
J	KAREW09	Waste Chute	11-1/2" x 3"	9" x 3"
K	KAREW07	Waste Chute	9-1/2" x 3"	7" x 3"

NOTE: All dimensions are approximate to +/- 1/4" as listed in this catalog. Karran states that no cutting or modifying of the countertop should occur before having the sink on hand.

EDGE 400 Series



Seamless Undermount Stainless Steel Sinks

- Designed to be seamlessly undermounted into all laminate and solid surface countertops
- Designed to be flush mounted into all granite and quartz countertops
- Handmade construction from T304, 18-gauge stainless steel
- 18/10 chrome-nickel makeup guards against oxidation and rust



A



B



C



ADA Compliant



D

	Item #	Style	Outside Dimensions	Inside Bowl Dimensions
A	KARE440	Large Single Bowl	31-1/2" x 18"	29-1/4" x 15-1/2" x 8-3/4"
B	KARE420	Single Bowl	24" x 18"	21-1/4" x 15-1/2" x 9"
C	KARE415	ADA Bar/Prep Bowl	16-1/4" x 18-1/4"	13-3/4" x 15-3/4" x 6"
D	KARE410	Bar/Prep Bowl	16-1/4" x 18-1/4"	13-3/4" x 15-3/4" x 8-1/2"

NOTE: All dimensions are approximate to +/- 1/4" as listed in this catalog. Karran states that no cutting or modifying of the countertop should occur before having the sink on hand.

EDGE 300 Series



Seamless Undermount Stainless Steel Sinks

- Designed to be seamlessly undermounted into all laminate and solid surface countertops
- Designed to be flush mounted into all granite and quartz countertops
- Handmade construction from T304, 18-gauge stainless steel
- 18/10 chrome-nickel makeup guards against oxidation and rust



A



B



C



D



E



F



G



H



I



ADA Compliant



J



ADA Compliant



K



ADA Compliant

	Item #	Style	Outside Dimensions	Inside Bowl Dimensions
A	KARE360R	Large/Small Bowl	32-3/8" x 21-1/8"	Left: 14-3/4" x 18-3/4" x 8-3/8" / Right: 13-3/4" x 16-1/4" x 6-1/4"
B	KARE350	Double Equal Bowl	32-3/8" x 19"	Left: 14-1/8" x 16-1/2" x 8-1/2" / Right: 14-1/8" x 16-1/2" x 8-1/2"
C	KARE340	Large Single Bowl	30-3/4" x 18-7/8"	28-1/4" x 16-1/4" x 9"
D	KARE330	D-Shape Single Bowl	23-3/8" x 21-1/8"	21-1/8" x 18-3/4" x 9"
E	KARE320	Single Bowl	24-1/8" x 18-1/8"	21-3/4" x 15-3/4" x 9"
F	KARE315	Bar/Prep Bowl	15-7/8" x 17-7/8"	13-3/8" x 15-7/8" x 8"
G	KARE312	Bar/Prep Bowl	15-1/4" x 15-1/4"	13" x 13" x 5-3/4"
H	KARE310	Bar/Prep Bowl	12-7/8" x 14-7/8"	10-1/4" x 12-3/8" x 6-1/2"
I	KARE309	ADA Vanity Bowl	18-1/8" x 15-3/4"	15-5/8" x 13-1/4" x 5-1/2"
J	KARE305	ADA Vanity Bowl	15-1/4" x 15-1/4"	12-3/4" x 12-3/4" x 5-3/4"
K	KARE303	ADA Vanity Bowl	18" x 14-1/2"	15-1/2" x 12" x 5-3/4"

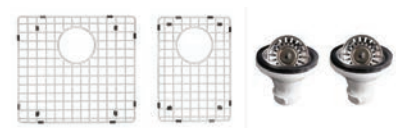
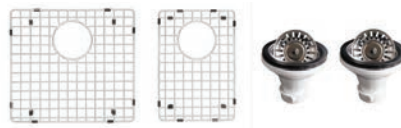
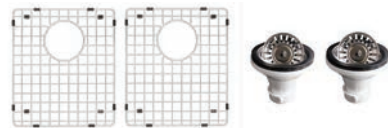
NOTE: All dimensions are approximate to +/- 1/4" as listed in this catalog. Karran states that no cutting or modifying of the countertop should occur before having the sink on hand.

ELITE Series



Undermount Stainless Steel Sink w/Apron Kits

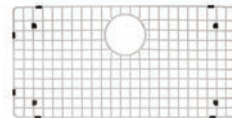
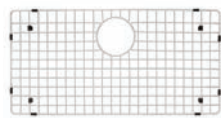
- Designed for all granite and quartz countertops
- Made of 304 stainless steel, 16 Gauge
- Sold in kits
- Single Bowl Includes: (1) Sink, (1) Basket Strainer & (1) Bottom Grid
- Double Bowl Includes: (1) Sink, (2) Basket Strainers & (2) Bottom Grids
- Soft satin brushed finish



A

B

C



D

E

	Item #	Style	Outside Dimensions	Inside Bowl Dimensions
A	KAREL88-PK	Double Equal Bowl	36" x 22-1/4"	Left: 16-1/4" x 18" x 10" / Right: 16-1/4" x 18" x 10"
B	KAREL87-PK	Large/Small Bowl	36" x 22-1/4"	Left: 19-3/4" x 18" x 10" / Right: 13" x 18" x 10"
C	KAREL86-PK	Large/Small Bowl	33" x 22-1/4"	Left: 16-3/4" x 18" x 10" / Right: 12-3/4" x 18" x 10"
D	KAREL84-PK	Single Bowl	33" x 22-1/4"	31" x 18" x 10"
E	KAREL82-PK	Single Bowl	30" x 22-1/4"	28" x 18" x 10"

NOTE: All dimensions are approximate to +/- 1/4" as listed in this catalog. Karran states that no cutting or modifying of the countertop should occur before having the sink on hand.

ELITE Series



Undermount & Top Mount Stainless Steel Sink Kits

- Designed for all granite and quartz countertops
- Made of T304 stainless steel, 16 Gauge
- Sold in kits
- Single Bowl Includes: (1) Sink, (1) Basket Strainer & (1) Bottom Grid
- Double Bowl Includes: (1) Sink, (2) Basket Strainers & (2) Bottom Grids
- Soft satin brushed finish



Item #	Style	Outside Dimensions	Inside Bowl Dimensions	
A	KAREL78L-PK	Undermount Small/Large Bowl	33" x 22"	Left: 13" x 18" x 10" / Right: 17" x 20" x 10"
B	KAREL78R-PK	Undermount Large/Small Bowl	33" x 22"	Left: 17" x 20" x 10" / Right: 13" x 18" x 10"
C	KAREL76-PK	Undermount Double Equal Bowl	32" x 19"	Left: 14-1/4" x 17" x 10" / Right: 14-1/4" x 17" x 10"
D	KAREL75-PK	Undermount Large Single Bowl	30" x 18"	28" x 16" x 10"
E	KAREL73-PK	Undermount Large Single Bowl	23" x 18"	21" x 16" x 10"
F	KAREL71-PK	Undermount Bar/Prep Bowl	15" x 20"	13" x 18" x 10"
G	KAREL35-PK	Top Mount Double Equal Bowl	33" x 22"	Left: 14-1/2" x 16-3/4" x 10" / Right: 14-1/2" x 16-3/4" x 10"
H	KAREL33-PK	Top Mount Large Single Bowl	33" x 22"	31" x 19" x 10"
I	KAREL30-PK	Top Mount Single Bowl	25" x 22"	22-1/4" x 16-3/4" x 10"

NOTE: All dimensions are approximate to +/- 1/4" as listed in this catalog. Karran states that no cutting or modifying of the countertop should occur before having the sink on hand.

UNDERMOUNT Series



Undermount Stainless Steel Sinks

- Designed for all granite and quartz countertops
- Made of 304 stainless steel, 18 Gauge
- Soft satin brushed finish



A



B



C



D



E



F

	Item #	Style	Outside Dimensions	Inside Bowl Dimensions
A	KARU6040L	Small/Large Bowl	31-1/2" x 20-1/8"	Left: 13-5/8" x 16" x 6-3/4" / Right: 14-3/4" x 18-1/2" x 8-3/4"
B	KARU6040R	Large/Small Bowl	31-1/2" x 20-1/8"	Left: 14-3/4" x 18-1/2" x 8-3/4" / Right: 13-5/8" x 16" x 6-3/4"
C	KARU5050	Double Equal Bowl	31-1/2" x 18-1/8"	Left: 14-1/8" x 16-1/2" x 8-3/4" / Right: 14-1/8" x 16-1/2" x 8-3/4"
D	KARU3018	Large Single Bowl	30-1/2" x 18-3/8"	28-3/8" x 16-3/8" x 9"
E	KARU2321	D-Shape Single Bowl	22-5/8" x 20-1/8"	21-1/4" x 18-3/4" x 9-3/4"
F	KARU2418	Single Bowl	24-1/8" x 18-1/8"	21-3/4" x 15-3/4" x 9"

NOTE: All dimensions are approximate to +/- 1/4" as listed in this catalog. Karran states that no cutting or modifying of the countertop should occur before having the sink on hand.

UNDERMOUNT Series



Undermount Stainless Steel Bar/Prep & Vanity Sinks

- Designed for all granite and quartz countertops
- Made of 304 stainless steel, 18 Gauge
- Soft satin brushed finish



A



B



C



D



ADA Compliant



E



F



ADA Compliant

	Item #	Style	Outside Dimensions	Inside Bowl Dimensions
A	KARU1517	Bar/Prep Bowl	14-5/8" x 16-3/4"	13-5/8" x 15-5/8" x 8"
B	KARU1414	Bar/Prep Bowl	14-1/2" x 14-1/2"	13" x 13" x 6-1/2"
C	KARU1113	Bar/Prep Bowl	11-1/2" x 13-1/2"	10-3/8" x 12-3/8" x 6-3/4"
D	KARUV1816	ADA Vanity Bowl	17-1/4" x 15"	15-5/8" x 13-1/4" x 6"
E	KARUV1715	Vanity Bowl	17-1/4" x 15"	15-5/8" x 13-1/4" x 6-1/2"
F	KARUV1515	ADA Vanity Bowl	14-1/2" x 14-1/2"	13" x 13" x 5-3/4"

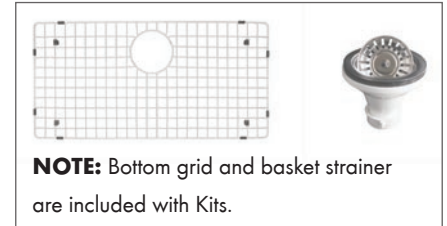
NOTE: All dimensions are approximate to +/- 1/4" as listed in this catalog. Karran states that no cutting or modifying of the countertop should occur before having the sink on hand.

NOVARO COLLECTION & PROFILE Series



Novaro Undermount Stainless Steel Sink Kits

- Made from T304, 18-gauge stainless steel
- 18/10 chrome-nickel makeup guards against oxidation and rust
- Finished with an elegant European soft satin brushed finish that is durable
- Small radiused bowl corners are easy to clean and maintain
- Equipped w/aluminum-coated sound absorption pads on all bowl walls and bottom to suppress noise
- Rear drain location leaves more storage room in your cabinet
- Kit includes: (1) stainless steel sink, (1) basket strainer & (1) bottom grid



A



B



C

	Item #	Style	Outside Dimensions	Inside Bowl Dimensions
A	KARNC410PK1	Bar/Prep Bowl	15" x 17-1/2"	13-1/4" x 15-5/8" x 9"
B	KARNC420PK1	Single Bowl	23-1/8" x 17"	21-1/2" x 15-1/2" x 9"
C	KARNC440PK1	Single Bowl	30-7/8" x 17-3/8"	29-1/4" x 15-3/4" x 9"

Profile Top Mount Stainless Steel Sinks - Single Packs / 40 Packs / Kits

- Available in 18-gauge stainless steel

Package options:

- Single pack includes: (1) stainless steel sink
- 40 pack includes: (40) stainless steel sinks
- Single bowl kit includes: (1) stainless steel sink, (1) basket strainer & (1) bottom grid
- Double bowl kit includes: (1) stainless steel sink, (2) basket strainers & (2) bottom grids



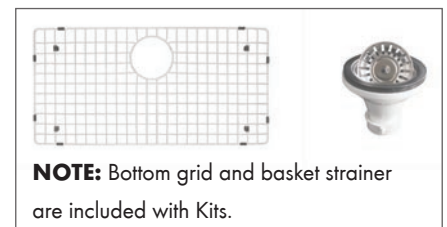
A

Outside Dimensions: 25" x 22" x 8"



B

Outside Dimensions: 33" x 22" x 8"



	18 Gauge Single Pack Item #	18 Gauge 40 Pack Item #	18 Gauge Kit Item #
A	KARPT30	KARPT30N	KARPT30-PK1
B	KARPT35	KARPT35N	KARPT35-PK1

PROFILE Series

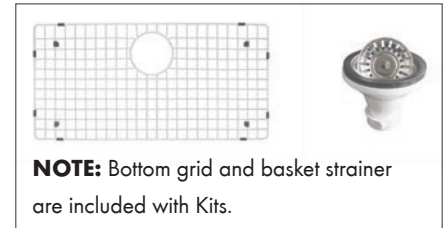


Undermount Stainless Steel Sinks - Single Packs / 40 Packs / Kits

- Available in 18-gauge stainless steel and 16-gauge stainless steel

Package options:

- Single pack includes: (1) stainless steel sink
- 40 pack includes: (40) stainless steel sinks
- Single bowl kit includes: (1) stainless steel sink, (1) basket strainer & (1) bottom grid
- Double bowl kit includes: (1) stainless steel sink, (2) basket strainers & (2) bottom grids



A

Outside Dimensions:
32-1/4" x 18-1/2" x 9"



B

Outside Dimensions:
31-1/2" x 20-1/2" x 9"



C

Outside Dimensions:
31-1/2" x 20-1/2" x 9"



D

Outside Dimensions:
30-1/2" x 18" x 9"



E

Outside Dimensions:
23-1/4" x 17-3/4" x 9"

	18 Gauge Single Pack Item #	18 Gauge 40 Pack Item #	18 Gauge Kit Item #	16 Gauge Single Pack Item #	16 Gauge 40 Pack Item #	16 Gauge Kit Item #
A	KARPU21	KARPU21N	KARPU21-PK1	KARPU51	KARPU51N	KARPU51-PK1
B	KARPU23L	KARPU23LN	KARPU23L-PK1	KARPU53L	KARPU53LN	KARPU53L-PK1
C	KARPU23R	KARPU23RN	KARPU23R-PK1	KARPU53R	KARPU53RN	KARPU53R-PK1
D	KARPU25	KARPU25N	KARPU25-PK1	KARPU55	KARPU55N	KARPU55-PK1
E	KARPU27	KARPU27N	KARPU27-PK1	KARPU57	KARPU57N	KARPU57-PK1

SELECT Series

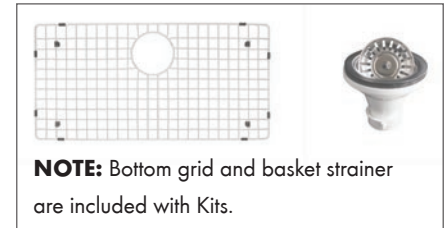


Undermount Stainless Steel Sinks - Single Packs / 40 Packs / Kits

- Made of 16-gauge stainless steel w/tight radius corners

Package options:

- Single pack includes: (1) stainless steel sink
- 40 pack includes: (40) stainless steel sinks
- Single bowl kit includes: (1) stainless steel sink, (1) basket strainer & (1) bottom grid
- Double bowl kit includes: (1) stainless steel sink, (2) basket strainers & (2) bottom grids



A
Outside Dimensions:
32" x 18" x 9"



B
Outside Dimensions:
30" x 18" x 9"



C
Outside Dimensions:
32" x 18" x 9"



D
Outside Dimensions:
30" x 18" x 9"



E
Outside Dimensions:
21-1/4" x 17-1/4" x 9"



F
Outside Dimensions:
16-1/2" x 18" x 9"

	Style	16 Gauge Single Pack Item #	16 Gauge 40 Pack Item #	16 Gauge Kit Item #
A	Double Equal Bowls, 32"	KARSU77	KARSU77N	KARSU77-PK1
B	Double Equal Bowls, 30"	KARSU76	KARSU76N	KARSU76-PK1
C	Single Large Bowl, 32"	KARSU75	KARSU75N	KARSU75-PK1
D	Single Large Bowl, 30"	KARSU74	KARSU74N	KARSU74-PK1
E	Single Bowl, 21-1/4"	KARSU73	KARSU73N	KARSU73-PK1
F	Bar/Prep Bowl, 16-1/2"	KARSU71	KARSU71N	KARSU71-PK1

QUARTZ WORKSTATION Series



Top Mount and Undermount Sink Kits

- Sinks have built-in ledges and included accessories which makes this sink series the most functional workspace
- Made from 80% natural quartz crystals and pure acrylic resin
- Heat safe up to 535°F and can withstand rapid temperature changes from hot and cold water
- Kit includes: (1) sink, (1) wood cutting board, (1) basket strainer, (1) bottom grid, (1) roll up drying rack and (1) colander



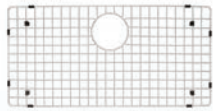
Kit includes:



Wood cutting board



Basket strainer



Bottom grid



Roll up drying rack



Colander



Top Mount, Black

Outside Dimensions: 33" x 22"
Inside Dimensions: 30" x 16-3/4" x 9"



Undermount, Concrete

Outside Dimensions: 32-1/2" x 19-3/8"
Inside Dimensions: 30" x 16-3/4" x 9"



Undermount w/Apron (Farmhouse), White

Outside Dimensions: 34" x 21-1/4" (Apron: 9-1/4")
Inside Dimensions: 31" x 15-3/4" x 9"



Retrofit Undermount w/Apron (Farmhouse), Gray

Outside Dimensions: 34" x 21-1/4" (Apron: 6-1/2")
Inside Dimensions: 31" x 15-3/4" x 9"

Color	Style	Top Mount Item #	Undermount Item #	Undermount w/ Apron (Farmhouse) Item #	Retrofit Undermount w/ Apron (Farmhouse) Item #
Bisque	Single Large Bowl	KARQTWS875BI	KARQUWS875BI	KARQAWS740BI	KARQARWS740BI
Black	Single Large Bowl	KARQTWS875BL	KARQUWS875BL	KARQAWS740BL	KARQARWS740BL
Brown	Single Large Bowl	KARQTWS875BR	KARQUWS875BR	KARQAWS740BR	KARQARWS740BR
Concrete	Single Large Bowl	KARQTWS875CN	KARQUWS875CN	KARQAWS740CN	KARQARWS740CN
Gray	Single Large Bowl	KARQTWS875GR	KARQUWS875GR	KARQAWS740GR	KARQARWS740GR
White	Single Large Bowl	KARQTWS875WH	KARQUWS875WH	KARQAWS740WH	KARQARWS740WH

QUARTZ Q Series



Seamless Undermount Quartz Sinks

- Designed to be seamlessly undermounted into all laminate and solid surface countertops
- Extremely scratch and chip resistant
- Will not fade or support bacteria growth
- Uniform color throughout
- Heat resistant over 530°F



A

Shown in Bisque
 Outside Dimensions: 32-1/2" x 21"
 Inside Bowl Dimensions:
 Left: 14-3/4" x 18-1/2" x 8-1/2"
 Right: 13-3/4" x 16" x 7-1/2"



B

Shown in Black
 Outside Dimensions: 32-3/8" x 19"
 Inside Bowl Dimensions:
 Left: 14-1/8" x 16-1/2" x 8-1/2"
 Right: 14-1/8" x 16-1/2" x 8-1/2"



C

Shown in Brown
 Outside Dimensions: 30-7/8" x 18-7/8"
 Inside Bowl Dimensions:
 28-3/8" x 16-3/8" x 9"



D

Shown in Concrete
 Outside Dimensions:
 24-1/4" x 18-1/4"
 Inside Bowl Dimensions:
 21-5/8" x 15-3/4" x 8-1/2"



E

Shown in Gray
 Outside Dimensions:
 16-5/8" x 16-5/8"
 Inside Bowl Dimensions:
 14" x 14" x 8"



F

Shown in White
 Outside Dimensions:
 19" x 15"
 Inside Bowl Dimensions:
 17" x 13" x 5-1/2"



G

Shown in Black
 Outside Dimensions:
 20" x 14" x 5-3/4"

	A	B	C	D	E	F	G
Color	Large/Small Bowl Item #	Double Equal Bowl Item #	Large Single Bowl Item #	Single Bowl Item #	Bar/Prep Bowl Item #	ADA Vanity Bowl Item #	Vanity Bowl Item #
Bisque	KARQ360RBI	KARQ350BI	KARQ340BI	KARQ320BI	KARQ315BI	KARQ306BI	KARQ309BI
Black	KARQ360RBL	KARQ350BL	KARQ340BL	KARQ320BL	KARQ315BL	KARQ306BL	KARQ309BL
Brown	KARQ360RBR	KARQ350BR	KARQ340BR	KARQ320BR	KARQ315BR	KARQ306BR	KARQ309BR
Concrete	KARQ360RCN	KARQ350CN	KARQ340CN	KARQ320CN	KARQ315CN	KARQ306CN	KARQ309CN
Gray	KARQ360RGR	KARQ350GR	KARQ340GR	KARQ320GR	KARQ315GR	KARQ306GR	KARQ309GR
White	KARQ360RWH	KARQ350WH	KARQ340WH	KARQ320WH	KARQ315WH	KARQ306WH	KARQ309WH

NOTE: All dimensions are approximate to +/- 1/4" as listed in this catalog. Karran states that no cutting or modifying of the countertop should occur before having the sink on hand.

QUARTZ QA & QAR Series



Undermount Quartz Sinks w/Aprons, Farmhouse Series

- Extremely scratch and chip resistant
- Will not fade or support bacteria growth
- Uniform color throughout and heat resistant over 530°F
- QA Series Apron Height: 9-1/4"
- QAR Series is a retrofit line and it is designed to fit in existing 36" standard sink base cabinets
- QAR Series Apron Height: 6-1/2"



A

Shown in Bisque

Outside Dimensions: 34" x 21-1/4"

Inside Bowl Dimensions:

Left: 17-1/4" x 16-3/4" x 9"

Right: 11-1/4" x 16-3/4" x 9"



B

Shown in Black

Outside Dimensions: 34" x 21-1/4"

Inside Bowl Dimensions:

Left: 14-3/4" x 16-3/4" x 9"

Right: 14-3/4" x 16-3/4" x 9"



C

Shown in Brown

Outside Dimensions: 34" x 21-1/4"

Inside Bowl Dimensions:

31" x 16-3/4" x 9"



D

Shown in Concrete

Outside Dimensions: 34" x 21-1/4"

Inside Bowl Dimensions:

Left: 17-1/4" x 16-3/4" x 9"

Right: 11-1/4" x 16-3/4" x 9"



E

Shown in Gray

Outside Dimensions: 34" x 21-1/4"

Inside Bowl Dimensions:

Left: 14-3/4" x 16-3/4" x 9"

Right: 14-3/4" x 16-3/4" x 9"



F

Shown in White

Outside Dimensions:

34" x 21-1/4"

Inside Bowl Dimensions:

31" x 16-3/4" x 9"

	A	B	C	D	E	F
Color	Large/Small Bowl Item #	Double Equal Bowl Item #	Large Single Bowl Item #	Retrofit Large/Small Bowl Item #	Retrofit Double Equal Bowl Item #	Retrofit Large Single Bowl Item #
Bisque	KARQA760BI	KARQA750BI	KARQA740BI	KARQAR760BI	KARQAR750BI	KARQAR740BI
Black	KARQA760BL	KARQA750BK	KARQA740BL	KARQAR760BL	KARQAR750BL	KARQAR740BL
Brown	KARQA760BR	KARQA750BR	KARQA740BR	KARQAR760BR	KARQAR750BR	KARQAR740BR
Concrete	KARQA760CN	KARQA750CN	KARQA740CN	KARQAR760CN	KARQAR750CN	KARQAR740CN
Gray	KARQA760GR	KARQA750GR	KARQA740GR	KARQAR760GR	KARQAR750GR	KARQAR740GR
White	KARQA760WH	KARQA750WH	KARQA740WH	KARQAR760WH	KARQAR750WH	KARQAR740WH

NOTE: All dimensions are approximate to +/- 1/4" as listed in this catalog. Karran states that no cutting or modifying of the countertop should occur before having the sink on hand.

QUARTZ QU Series



Undermount Quartz Sinks

- Extremely scratch and chip resistant
- Will not fade or support bacteria growth
- Uniform color throughout and heat resistant over 530°F



A

Shown in Bisque
 Outside Dimensions: 32" x 21"
 Inside Bowl Dimensions:
 Left: 15-1/4" x 18-3/8" x 9"
 Right: 12-7/8" x 16" x 9"



B

Shown in Black
 Outside Dimensions: 32" x 21"
 Inside Bowl Dimensions:
 Left: 18" x 17-1/4" x 10"
 Right: 11" x 15-1/4" x 7-1/2"



C

Shown in Brown
 Outside Dimensions: 31-5/8" x 19-1/8"
 Inside Bowl Dimensions:
 29" x 16-3/8" x 9"



D

Shown in Concrete
 Outside Dimensions:
 24" x 21"
 Inside Bowl Dimensions:
 21-3/8" x 17-7/8" x 9"



E

Shown in Gray
 Outside Dimensions:
 16-5/8" x 16-5/8"
 Inside Bowl Dimensions:
 14" x 14" x 8-1/4"



F

Shown in White
 Outside Dimensions: 32-1/2" x 19-1/2"
 Inside Bowl Dimensions:
 Left: 14-1/2" x 15-3/4" x 9"
 Right: 14-1/2" x 15-3/4" x 9"

	A	B	C	D	E	F
Color	Large/Small Bowl Item #	Double Equal Bowl Item #	Large Single Bowl Item #	Single Bowl Item #	Bar/Prep Bowl Item #	Double Equal Bowl Item #
Bisque	KARQU610BI	KARQU630BI	KARQU670BI	KARQU671BI	KARQU690BI	KARQU710BI
Black	KARQU610BK	KARQU630BK	KARQU670BK	KARQU671BK	KARQU690BK	KARQU710BK
Brown	KARQU610BR	KARQU630BR	KARQU670BR	KARQU671BR	KARQU690BR	KARQU710BR
Concrete	KARQU610CN	KARQU630CN	KARQU670CN	KARQU671CN	KARQU690CN	KARQU710CN
Gray	KARQU610GR	KARQU630GR	KARQU670GR	KARQU671GR	KARQU690GR	KARQU710GR
White	KARQU610WH	KARQU630WH	KARQU670WH	KARQU671WH	KARQU690WH	KARQU710WH

NOTE: All dimensions are approximate to +/- 1/4" as listed in this catalog. Karran states that no cutting or modifying of the countertop should occur before having the sink on hand.

QUARTZ QU Series



Undermount Quartz Sinks

- Extremely scratch and chip resistant
- Will not fade or support bacteria growth
- Uniform color throughout and heat resistant over 530°F



A Shown in Bisque

Outside Dimensions: 32-1/2" x 19-1/2"

Inside Bowl Dimensions:

Left: 17-1/2" x 15-3/4" x 9"

Right: 11-3/8" x 15-3/4" x 9"



B Shown in Black

Outside Dimensions: 32-1/2" x 19-1/2"

Inside Bowl Dimensions:

30" x 15-3/4" x 9"



C Shown in Brown

Outside Dimensions: 33-1/2" x 20-1/2"

Inside Bowl Dimensions:

Left: 14-3/8" x 17-1/2" x 9"

Right: 14-3/8" x 16" x 9"



D Shown in Concrete

Outside Dimensions:

33-1/2" x 20-5/8"

Inside Bowl Dimensions:

Left: 17-5/8" x 17-1/2" x 9"

Right: 11-1/8" x 16-1/8" x 9"



E Shown in Gray

Outside Dimensions:

33-1/2" x 21"

Inside Bowl Dimensions:

30" x 18" x 16-3/8"



F Shown in White

Outside Dimensions: 32-3/8" x 19-1/4"

Inside Bowl Dimensions:

Left: 14-1/4" x 16-3/4" x 9"

Right: 14-1/4" x 16-3/4" x 9"



G Shown in Bisque

Outside Dimensions: 32" x 21-1/4"

Inside Bowl Dimensions:

Left: 17-1/8" x 19" x 9"

Right: 11-1/2" x 16-3/4" x 9"



H Shown in Concrete

Outside Dimensions: 32-1/2" x 19-1/4"

Inside Bowl Dimensions:

30" x 16-3/4" x 9"

	A	B	C	D	E	F	G	H
Color	Large/Small Bowl Item #	Large Single Bowl Item #	Double Equal Bowl Item #	Large/Small Bowl Item #	Large Single Bowl Item #	Double Equal Bowl Item #	Large/Small Bowl Item #	Single Bowl Item #
Bisque	KARQU711BI	KARQU712BI	KARQU720BI	KARQU721BI	KARQU722BI	KARQU810BI	KARQU811BI	KARQU812BI
Black	KARQU711BK	KARQU712BK	KARQU720BK	KARQU721BK	KARQU722BK	KARQU810BL	KARQU811BL	KARQU812BL
Brown	KARQU711BR	KARQU712BR	KARQU720BR	KARQU721BR	KARQU722BR	KARQU810BN	KARQU811BN	KARQU812BR
Concrete	KARQU711CN	KARQU712CN	KARQU720CN	KARQU721CN	KARQU722CN	KARQU810CT	KARQU811CT	KARQU812CN
Gray	KARQU711GR	KARQU712GR	KARQU720GR	KARQU721GR	KARQU722GR	KARQU810GR	KARQU811GR	KARQU812GR
White	KARQU711WH	KARQU712WH	KARQU720WH	KARQU721WH	KARQU722WH	KARQU810WH	KARQU811WH	KARQU812WH

NOTE: All dimensions are approximate to +/- 1/4" as listed in this catalog. Karran states that no cutting or modifying of the countertop should occur before having the sink on hand.

QUARTZ QT Series



Top Mount Quartz Sinks

- Extremely scratch and chip resistant
- Will not fade or support bacteria growth
- Uniform color throughout and heat resistant over 530°F



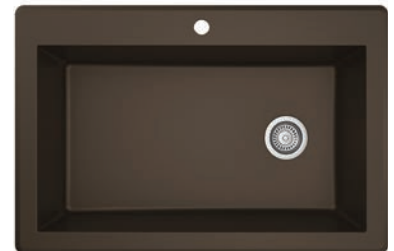
A

Shown in Bisque
 Outside Dimensions: 33" x 22"
 Inside Bowl Dimensions:
 Left: 15-1/4" x 18-3/8" x 9"
 Right: 12-7/8" x 16" x 9"



B

Shown in Black
 Outside Dimensions: 33" x 22"
 Inside Bowl Dimensions:
 Left: 18" x 17-1/4" x 10"
 Right: 11" x 15-1/4" x 7-1/2"



C

Shown in Brown
 Outside Dimensions: 33" x 22"
 Inside Bowl Dimensions:
 29" x 16-3/8" x 9"



D

Shown in Concrete
 Outside Dimensions: 25" x 22"
 Inside Bowl Dimensions:
 21-3/8" x 17-7/8" x 9"



E

Shown in Gray
 Outside Dimensions: 33" x 22"
 Inside Bowl Dimensions:
 Left: 14-1/2" x 15-3/4" x 9"
 Right: 14-1/2" x 15-3/4" x 9"



F

Shown in White
 Outside Dimensions: 33" x 22"
 Inside Bowl Dimensions:
 Left: 17-1/2" x 15-3/4" x 9"
 Right: 11-3/8" x 15-3/4" x 9"

	A	B	C	D	E	F
Color	Large/Small Bowl Item #	Large/Small Bowl Item #	Large Single Bowl Item #	Single Bowl Item #	Double Equal Bowl Item #	Large/Small Bowl Item #
Bisque	KARQT610BI	KARQT630BI	KARQT670BI	KARQT671BI	KARQT710BI	KARQT711BI
Black	KARQT610BK	KARQT630BK	KARQT670BK	KARQT671BK	KARQT710BK	KARQT711BK
Brown	KARQT610BR	KARQT630BR	KARQT670BR	KARQT671BR	KARQT710BR	KARQT711BR
Concrete	KARQT610CN	KARQT630CN	KARQT670CN	KARQT671CN	KARQT710CN	KARQT711CN
Gray	KARQT610GR	KARQT630GR	KARQT670GR	KARQT671GR	KARQT710GR	KARQT711GR
White	KARQT610WH	KARQT630WH	KARQT670WH	KARQT671WH	KARQT710WH	KARQT711WH

NOTE: All dimensions are approximate to +/- 1/4" as listed in this catalog. Karran states that no cutting or modifying of the countertop should occur before having the sink on hand.

QUARTZ QT & QX Series



Top Mount Quartz Sinks

- Extremely scratch and chip resistant
- Will not fade or support bacteria growth
- Uniform color throughout and heat resistant over 530°F



A Shown in Bisque
 Outside Dimensions: 33" x 22"
 Inside Bowl Dimensions:
 30" x 15-3/4" x 9"



B Shown in Black
 Outside Dimensions: 33" x 22"
 Inside Bowl Dimensions:
 Left: 14-3/8" x 17-1/4" x 9"
 Right: 14-3/8" x 16" x 9"



C Shown in Brown
 Outside Dimensions: 34" x 22"
 Inside Bowl Dimensions:
 Left: 17-5/8" x 17-1/2" x 9"
 Right: 11-1/8" x 16-1/8" x 9"



D Shown in Concrete
 Outside Dimensions: 34" x 22"
 Inside Bowl Dimensions:
 30" x 18" x 9"



E Shown in Gray
 Outside Dimensions: 33" x 22"
 Inside Bowl Dimensions:
 Left: 14-1/4" x 16-3/4" x 9"
 Right: 14-1/4" x 16-3/4" x 9"



F Shown in White
 Outside Dimensions: 33" x 22"
 Inside Bowl Dimensions:
 Left: 17-1/8" x 19" x 9"
 Right: 11-1/2" x 16-3/4" x 9"



G Shown in Concrete
 Outside Dimensions: 33" x 22"
 Inside Bowl Dimensions:
 30" x 16-3/4" x 9"



H Shown in Bisque
 Outside Dimensions: 18" x 16"
 Inside Bowl Dimensions:
 14" x 9" x 7-1/2"

	A	B	C	D	E	F	G	H
Color	Large Single Bowl Item #	Double Equal Bowl Item #	Large/Small Bowl Item #	Large Single Bowl Item #	Double Equal Bowl Item #	Large/Small Bowl Item #	Single Bowl Item #	Bar/Prep Bowl Item #
Bisque	KARQT712BI	KARQT720BI	KARQT721BI	KARQT722BI	KARQT810BI	KARQT811BI	KARQT812BI	KARQX680BI
Black	KARQT712BK	KARQT720BK	KARQT721BK	KARQT722BL	KARQT810BL	KARQT811BL	KARQT812BL	KARQX680BK
Brown	KARQT712BR	KARQT720BR	KARQT721BR	KARQT722BR	KARQT810BR	KARQT811BR	KARQT812BR	KARQX680BR
Concrete	KARQT712CN	KARQT720CN	KARQT721CN	KARQT722CN	KARQT810CT	KARQT811CT	KARQT812CN	KARQX680CN
Gray	KARQT712GR	KARQT720GR	KARQT721GR	KARQT722GR	KARQT810GR	KARQT811GR	KARQT812GR	KARQX680GR
White	KARQT712WH	KARQT720WH	KARQT721WH	KARQT722WH	KARQT810WH	KARQT811WH	KARQT812WH	KARQX680WH

NOTE: All dimensions are approximate to +/- 1/4" as listed in this catalog. Karran states that no cutting or modifying of the countertop should occur before having the sink on hand.

ACRYLIC Series



Seamless Undermount Acrylic Sinks

- Designed to be seamlessly undermounted into laminate and solid surface countertops, and flush mounted into granite and quartz countertops
- Made from an ultra-dense, 100% non-porous pure acrylic resin
- Reinforced with a fiberglass resin backing for added strength
- Finished with a satin finish that is both durable and visually appealing
- Material is stain and heat resistant, and impervious to thermal cracking



	Bisque Item #	White Item #	Style	Outside Dimensions	Inside Bowl Dimensions
A	KARA370B	KARA370W	Double Equal Bowl	33" x 19"	Left: 14" x 16" x 8-3/4" / Right: 14" x 16" x 8-3/4"
B	KARA360RB	KARA360RW	Large/Small Bowl	32-1/4" x 21"	Left: 14-3/4" x 18-1/2" x 8-3/4" / Right: 13-7/8" x 16" x 7-3/4"
C	KARA355B	KARA355W	Double Equal Bowl	31-1/2" x 19"	Left: 13-1/2" x 16-3/4" x 8-3/4" / Right: 13-1/2" x 16-3/4" x 8-3/4"
D	KARA350B	KARA350W	Double Equal Bowl	32-3/4" x 19-1/4"	Left: 14-1/2" x 17" x 9" / Right: 14-1/2" x 17" x 9"
E	KARA340B	KARA340W	Large Single Bowl	30-1/2" x 18-1/2"	28-1/4" x 16-1/4" x 9"
F	KARA320B	KARA320W	Single Bowl	24" x 17-1/2"	21-3/4" x 15-1/2" x 9"
G	KARA315B	KARA315W	Bar/Prep Bowl	14" x 17"	11-5/8" x 14-5/8" x 6"
H	KARA309B	KARA309W	Vanity Bowl	20-3/4" x 13-3/4"	18-5/8" x 11-5/8" x 5-1/8"
I	KARA306B	KARA306W	Vanity Bowl	19" x 15-1/2"	16-1/2" x 13" x 6"

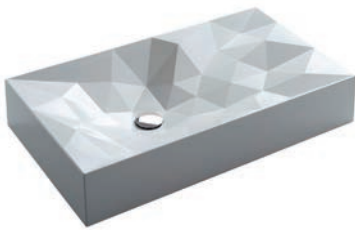
NOTE: All dimensions are approximate to +/- 1/4" as listed in this catalog. Karran states that no cutting or modifying of the countertop should occur before having the sink on hand.

STERNHAGEN Collection



Quartz Bathroom Vessel Sinks

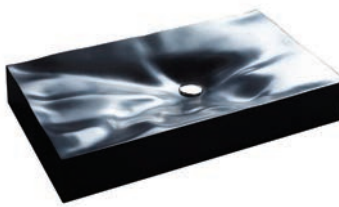
- Designed for an above-counter installation in any countertop material
- Made from quartz composite
- Non-porous and naturally hygienic material
- Resistant to scratching, fading, and impact



A Diamond



B Sea Crest



C Mirage



D Envy

	Sink Name	Outside Dimensions	Black Item #	Gray Item #	White Item #
A	Diamond	28-1/8" x 16-3/8" x 5-1/8"	KARSQS400BL	KARSQS400GR	KARSQS400WH
B	Sea Crest	21-1/2" x 16-3/8" x 5-1/8"	KARSQS200BL	KARSQS200GR	KARSQS200WH
C	Mirage	32-1/8" x 18-1/4" x 5-1/8"	KARSQS300BL	KARSQS300GR	KARSQS300WH
D	Envy	24-1/4" x 17-1/2" x 5-1/8"	KARSQS100BL	KARSQS100GR	KARSQS100WH

Diamond



Sea Crest



Mirage



Envy

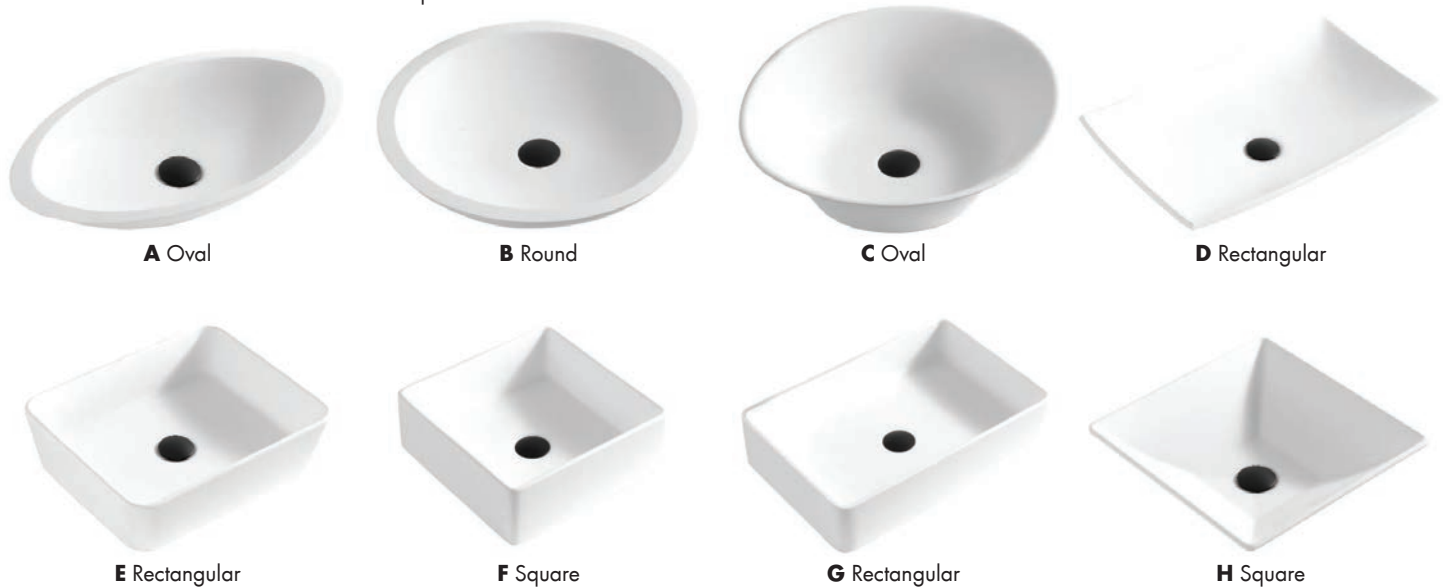


QUATTRO MATTE Collection



Acrylic Bathroom Vessel Sinks

- Designed for an above-counter installation in any countertop material
- Made from 100% pure acrylic resin
- Non-porous and naturally hygienic material
- Resistant to scratching, fading, and impact
- Certifications: cUPC certified and ADA compliant



	Shape	Outside Dimensions	Item #	Finish
A	Oval	23" x 13-1/4" x 4"	KARQM160WH	White
B	Round	19-1/4" x 19-1/4" x 4"	KARQM162WH	White
C	Oval	20-5/8" x 17" x 7"	KARQM164WH	White
D	Rectangular	25-1/4" x 15-1/2" x 4-1/4"	KARQM170WH	White
E	Rectangular	18" x 14-1/2" x 5"	KARQM172WH	White
F	Square	14-1/2" x 14-1/2" x 5"	KARQM174WH	White
G	Rectangular	21-1/4" x 13-3/4" x 4-3/4"	KARQM176WH	White
H	Square	16" x 16" x 4-1/2"	KARQM178WH	White



Oval (KARQM160WH)



Rectangular (KARQM172WH)



Square (KARQM178WH)

VALERA Collection

Vitreous China Sinks

- Durable double-glazed finish
- Finished in a high gloss surface finish that is both durable and visually appealing
- Material is stain and heat resistant
- ADA Compliant



A



B



C



D



E



F



G



H



I

	White Item #	Installation Type	Style	Outside Dimensions
A	KARVC101WH	Undermount	Single Vanity Bowl	17" x 14" x 6"
B	KARVC102WH	Undermount	Single Vanity Bowl	19-1/4" x 15-3/4" x 6-1/4"
C	KARVC105WH	Undermount	Single Vanity Bowl	18" x 13" x 5-3/4"
D	KARVC106WH	Undermount	Single Vanity Bowl	21" x 15" x 6-1/4"
E	KARVC108WH	Undermount	Single Vanity Bowl	21" x 13-3/8" x 5-1/2"
F	KARVC110WH	Undermount	Single Vanity Bowl	19-1/2" x 15-1/2" x 4-1/2"
G	KARVC115WH	Undermount	Single Vanity Bowl	17" x 13-3/4" x 5-1/2"
H	KARVC201WH	Top Mount	Single Vanity Bowl w/Overflow Drain	20-3/8" x 16-1/8" x 6-1/8"
I	KARVC202WH	Top Mount	Bathroom Sink	21-1/8" x 14-1/2" x 4-3/8"

NOTE: All dimensions are approximate to +/- 1/4" as listed in this catalog. Karran states that no cutting or modifying of the countertop should occur before having the sink on hand.

VALERA Collection



Vitreous China Sinks

- Durable double-glazed finish
- Finished in a high gloss surface finish that is both durable and visually appealing
- Material is stain and heat resistant
- ADA Compliant



A



B



C



D



E



F



G



H



I

	White Item #	Installation Type	Style	Outside Dimensions
A	KARVC203WH	Top Mount	Bathroom Sink	17-3/4" x 17-3/4" x 4-7/8"
B	KARVC301WH	Above-counter	Bathroom Vessel Sink w/Overflow Drain	22-7/8" x 14-7/8" x 7-1/2"
C	KARVC302WH	Above-counter	Bathroom Vessel Sink	15-1/2" x 13-1/4" x 5-3/4"
D	KARVC303WH	Above-counter	Bathroom Vessel Sink	27" x 16-3/4" x 4-5/8"
E	KARVC401WH	Above-counter	Bathroom Vessel Sink w/Overflow Drain	18-1/8" x 18-1/8" x 6-1/4"
F	KARVC402WH	Above-counter	Bathroom Vessel Sink w/Overflow Drain	18-7/8" x 18-7/8" x 7-3/4"
G	KARVC410WH	Above-counter	Bathroom Vessel Sink w/Overflow Drain	16-5/8" x 16-5/8" x 6-3/4"
H	KARVC411WH	Above-counter	Bathroom Vessel Sink	15-1/2" x 15-1/2" x 6"
I	KARVC420WH	Above-counter	Bathroom Vessel Sink	18" x 18" x 6-1/4"

NOTE: All dimensions are approximate to +/- 1/4" as listed in this catalog. Karran states that no cutting or modifying of the countertop should occur before having the sink on hand.

VALERA Collection



Vitreous China Sinks

- Durable double-glazed finish
- Finished in a high gloss surface finish that is both durable and visually appealing
- Material is stain and heat resistant
- ADA Compliant



A



B



C



D



E



F



G



H



I

	White Item #	Installation Type	Style	Outside Dimensions
A	KARVC421WH	Above-counter	Bathroom Vessel Sink	16" x 16" x 5-1/2"
B	KARVC422WH	Above-counter	Bathroom Vessel Sink	16-1/2" x 16-1/2" x 5-1/2"
C	KARVC423WH	Above-counter	Bathroom Vessel Sink	14-1/8" x 14-1/8" x 4-3/4"
D	KARVC424WH	Above-counter	Bathroom Vessel Sink	14-1/4" x 14-1/4" x 4-3/4"
E	KARVC425WH	Above-counter	Bathroom Vessel Sink	16-1/8" x 16-1/8" x 5-1/4"
F	KARVC426WH	Above-counter	Bathroom Vessel Sink	19-1/2" x 19-1/2" x 5"
G	KARVC427WH	Above-counter	Bathroom Vessel Sink	16-1/2" x 16-1/2" x 5-1/8"
H	KARVC428WH	Above-counter	Bathroom Vessel Sink	18-1/4" x 18-1/4" x 5-7/8"
I	KARVC501WH	Above-counter	Bathroom Vessel Sink	18-3/4" x 14-1/2" x 5-1/8"

NOTE: All dimensions are approximate to +/- 1/4" as listed in this catalog. Karran states that no cutting or modifying of the countertop should occur before having the sink on hand.

VALERA Collection



Vitreous China Sinks

- Durable double-glazed finish
- Finished in a high gloss surface finish that is both durable and visually appealing
- Material is stain and heat resistant
- ADA Compliant



	White Item #	Installation Type	Style	Outside Dimensions
A	KARVC502WH	Above-counter	Bathroom Vessel Sink	19" x 13-1/4" x 5-1/2"
B	KARVC503WH	Above-counter	Bathroom Vessel Sink	15-1/2" x 13" x 4"
C	KARVC504WH	Above-counter	Bathroom Vessel Sink	24" x 15-1/2" x 4-3/4"
D	KARVC505WH	Above-counter	Bathroom Vessel Sink	20" x 15-7/8" x 5-1/2"
E	KARVC506WH	Above-counter	Bathroom Vessel Sink	24-1/4" x 14" x 4-1/4"
F	KARVC507WH	Above-counter	Bathroom Vessel Sink	19" x 11-1/2" x 5-1/8"
G	KARVC508WH	Above-counter	Bathroom Vessel Sink	26-3/8" x 14-7/8" x 4-3/4"
H	KARVC509WH	Above-counter	Bathroom Vessel Sink	16-3/4" x 16-1/2" x 5-1/4"
I	KARVC510WH	Above-counter	Bathroom Vessel Sink	16-3/4" x 16-3/4" x 5-3/8"

NOTE: All dimensions are approximate to +/- 1/4" as listed in this catalog. Karran states that no cutting or modifying of the countertop should occur before having the sink on hand.

VALERA Collection

Vitreous China Sinks

- Durable double-glazed finish
- Finished in a high gloss surface finish that is both durable and visually appealing
- Material is stain and heat resistant
- ADA Compliant



A



B



C



D



E

	White Item #	Installation Type	Style	Outside Dimensions
A	KARVC511WH	Above-counter	Bathroom Vessel Sink	19-7/8" x 15-3/4" x 5-1/2"
B	KARVC512WH	Above-counter	Bathroom Vessel Sink	18-1/4" x 13-1/8" x 5-3/8"
C	KARVC601WH	Above-counter	Bathroom Vessel Sink	18-3/4" x 16-3/8" x 5-1/8"
D	KARVC602WH	Above-counter	Bathroom Vessel Sink	25-1/8" x 16-1/2" x 5-1/8"
E	KARVC603WH	Above-counter	Bathroom Vessel Sink	16-1/4" x 16-1/4" x 4-3/8"

NOTE: All dimensions are approximate to +/- 1/4" as listed in this catalog. Karran states that no cutting or modifying of the countertop should occur before having the sink on hand.

KITCHEN FAUCETS



Brushed Gold

Scottsdale Series Faucets

- Single-Handle Pull-Down Sprayer
- Single hole installation - 1.75" maximum deck thickness
- ADA compliant - Single lever handle makes control simple
- Rotates 90° forward allowing for operation in tight spaces with backsplashes
- 1.8 GPM water flow alternates between powerful spray and aerated flow
- Lead-free CALGreen California compliant durable brass construction
- Kerox ceramic cartridge - highest quality "no-drip" precision
- Included Components: Hot water line, cold water line, installation hardware

Item #	Faucet Height	Spout Height	Spout Reach	Finish
KARKKF210C	18-7/8"	6-1/2"	8-5/8"	Chrome
KARKKF210SS	18-7/8"	6-1/2"	8-5/8"	Stainless Steel
KARKKF210MB	18-7/8"	6-1/2"	8-5/8"	Matte Black
KARKKF210GG	18-7/8"	6-1/2"	8-5/8"	Gunmetal Gray
KARKKF210BG	18-7/8"	6-1/2"	8-5/8"	Brushed Gold



Matte Black

Bluffton Series Faucets

- Single-Handle Pull-Down Sprayer
- Single hole installation - 1.75" maximum deck thickness
- ADA compliant - Single lever handle makes control simple
- Rotates 90° forward allowing for operation in tight spaces with backsplashes
- 1.8 GPM water flow alternates between powerful spray and aerated flow
- Lead-free CALGreen California compliant durable brass construction
- Kerox ceramic cartridge - highest quality "no-drip" precision
- Included Components: Hot water line, cold water line, installation hardware

Item #	Faucet Height	Spout Height	Spout Reach	Finish
KARKKF220C	22-17/32"	7-7/32"	8-31/32"	Chrome
KARKKF220SS	22-17/32"	7-7/32"	8-31/32"	Stainless Steel
KARKKF220MB	22-17/32"	7-7/32"	8-31/32"	Matte Black



Chrome

Tumba Series Faucets

- Single-Handle Pull-Down Sprayer
- Single hole installation - 1.75" maximum deck thickness
- ADA compliant - Single lever handle makes control simple
- Rotates 90° forward allowing for operation in tight spaces with backsplashes
- 1.8 GPM water flow alternates between powerful spray and aerated flow
- Lead-free CALGreen California compliant durable brass construction
- Kerox ceramic cartridge - highest quality "no-drip" precision
- Included Components: Hot water line, cold water line, installation hardware

Item #	Faucet Height	Spout Height	Spout Reach	Finish
KARKKF230C	26-25/32"	10", 8-3/16"	8-31/32", 8-19/32"	Chrome
KARKKF230SS	26-25/32"	10", 8-3/16"	8-31/32", 8-19/32"	Stainless Steel
KARKKF230MB	26-25/32"	10", 8-3/16"	8-31/32", 8-19/32"	Matte Black

KITCHEN FAUCETS



Chrome

Weybridge Series Faucets

- Single-Handle Pull-Down Sprayer
- Single hole installation - 1.75" maximum deck thickness
- ADA compliant - Single lever handle makes control simple
- Rotates 90° forward allowing for operation in tight spaces with backsplashes
- 1.8 GPM water flow alternates between powerful spray and aerated flow
- Lead-free CALGreen California compliant durable brass construction
- Kerox ceramic cartridge - highest quality "no-drip" precision
- Included Components: Hot water line, cold water line, installation hardware

Item #	Faucet Height	Spout Height	Spout Reach	Finish
KARKKF240C	14-13/16"	6-25/32"	8-1/8"	Chrome
KARKKF240MB	14-13/16"	6-25/32"	8-1/8"	Matte Black
KARKKF240SS	14-13/16"	6-25/32"	8-1/8"	Stainless Steel



Stainless Steel

Dockton Series Faucets

- Single-Handle Pull-Down Sprayer
- Single hole installation - 1.75" maximum deck thickness
- ADA compliant - Single lever handle makes control simple
- Rotates 90° forward allowing for operation in tight spaces with backsplashes
- 1.8 GPM water flow alternates between powerful spray and aerated flow
- Lead-free CALGreen California compliant durable brass construction
- Kerox ceramic cartridge - highest quality "no-drip" precision
- Included Components: Hot water line, cold water line, installation hardware

Item #	Faucet Height	Spout Height	Spout Reach	Finish
KARKKF250C	15-31/32"	7-11/16"	8-3/16"	Chrome
KARKKF250MB	15-31/32"	7-11/16"	8-3/16"	Matte Black
KARKKF250SS	15-31/32"	7-11/16"	8-3/16"	Stainless Steel



Chrome

Hillwood Series Faucets

- Dual-Handle Pull-Down Sprayer
- Horizontal handle design to main body, rotates 90° left to right
- Two hole installation - 1.75" maximum deck thickness
- ADA compliant - Single lever handle makes control simple
- Rotates 90° forward allowing for operation in tight spaces with backsplashes
- 1.8 GPM water flow alternates between powerful spray and aerated flow
- Lead-free CALGreen California compliant durable brass construction
- Kerox ceramic cartridge - highest quality "no-drip" precision
- Included Components: Hot water line, cold water line, installation hardware

Item #	Faucet Height	Spout Height	Spout Reach	Finish
KARKKF260C	14-7/16"	7-1/4"	8-7/16"	Chrome
KARKKF260MB	14-7/16"	7-1/4"	8-7/16"	Matte Black
KARKKF260SS	14-7/16"	7-1/4"	8-7/16"	Stainless Steel

KITCHEN FAUCETS



Gunmetal Gray

Auburn Series Faucets

- Pull-Down Kitchen Faucet
- Single hole installation - 1.94" maximum deck thickness
- ADA compliant - Single lever handle makes control simple
- Vertical handle design to main body, rotates 90° forward
- 360° swivelling spout keeps pull-down action operating smoothly
- 1.8 GPM water flow alternates between powerful spray and aerated flow
- Lead-free CALGreen California compliant durable brass construction
- Kerox ceramic cartridge - highest quality "no-drip" precision
- Included Components: Hot water line, cold water line, installation hardware

Item #	Faucet Height	Spout Height	Spout Reach	Finish
KARKKF310GG	16-9/16"	8-3/16"	9"	Gunmetal Gray
KARKKF310MB	16-9/16"	8-3/16"	9"	Matte Black
KARKKF310SS	16-9/16"	8-3/16"	9"	Stainless Steel



Stainless Steel

Kentland Series Faucets

- Pull-Down Kitchen Faucet
- Single hole installation - 1.94" maximum deck thickness
- ADA compliant - Single lever handle makes control simple
- Vertical handle design to main body, rotates 90° forward
- 360° swivelling spout keeps pull-down action operating smoothly
- 1.8 GPM water flow alternates between powerful spray and aerated flow
- Lead-free CALGreen California compliant durable brass construction
- Kerox ceramic cartridge - highest quality "no-drip" precision
- Included Components: Hot water line, cold water line, installation hardware

Item #	Faucet Height	Spout Height	Spout Reach	Finish
KARKKF320GG	15"	8-1/2"	9-1/8"	Gunmetal Gray
KARKKF320MB	15"	8-1/2"	9-1/8"	Matte Black
KARKKF320SS	15"	8-1/2"	9-1/8"	Stainless Steel



Matte Black

Elwood Series Faucets

- Pull-Down Kitchen Faucet
- Single hole installation - 1.94" maximum deck thickness
- ADA compliant - Single lever handle makes control simple
- Vertical handle design to main body, rotates 90° forward
- 360° swivelling spout keeps pull-down action operating smoothly
- 1.8 GPM water flow alternates between powerful spray and aerated flow
- Lead-free CALGreen California compliant durable brass construction
- Kerox ceramic cartridge - highest quality "no-drip" precision
- Included Components: Hot water line, cold water line, installation hardware

Item #	Faucet Height	Spout Height	Spout Reach	Finish
KARKKF330GG	17-3/16"	9"	8-11/16"	Gunmetal Gray
KARKKF330MB	17-3/16"	9"	8-11/16"	Matte Black
KARKKF330SS	17-3/16"	9"	8-11/16"	Stainless Steel

KITCHEN FAUCETS



Stainless Steel

Kadoma Series Hands-Free Sensor Faucets

- Pull-Down Kitchen Faucet
- Single hole installation - 1.94" maximum deck thickness
- ADA compliant - Single lever handle makes control simple
- Vertical handle design to main body, rotates 90° forward
- 360° swivelling spout keeps pull-down action operating smoothly
- 1.8 GPM water flow alternates between powerful spray and aerated flow
- Lead-free CALGreen California compliant durable brass construction
- Kerox ceramic cartridge - highest quality "no-drip" precision
- Included Components: Hot water line, cold water line, installation hardware

Item #	Faucet Height	Spout Height	Spout Reach	Finish
KARKKF340GG	16-7/16"	7-13/16"	8-1/2"	Gunmetal Gray
KARKKF340MB	16-7/16"	7-13/16"	8-1/2"	Matte Black
KARKKF340SS	16-7/16"	7-13/16"	8-1/2"	Stainless Steel



Gunmetal Gray

Lagrange Series Faucets

- Pull-Down Kitchen Faucet
- Single hole installation - 1.94" maximum deck thickness
- ADA compliant - Single lever handle makes control simple
- Vertical handle design to main body, rotates 90° forward
- 360° swivelling spout keeps pull-down action operating smoothly
- 1.8 GPM water flow alternates between powerful spray and aerated flow
- Lead-free CALGreen California compliant durable brass construction
- Kerox ceramic cartridge - highest quality "no-drip" precision
- Included Components: Hot water line, cold water line, installation hardware

Item #	Faucet Height	Spout Height	Spout Reach	Finish
KARKKF350GG	17-9/16"	8-13/16"	9-3/8"	Gunmetal Gray
KARKKF350MB	17-9/16"	8-13/16"	9-3/8"	Matte Black
KARKKF350SS	17-9/16"	8-13/16"	9-3/8"	Stainless Steel



Kadoma Stainless Steel



Lagrange Gunmetal Gray

BATHROOM FAUCETS



Woodburn Collection

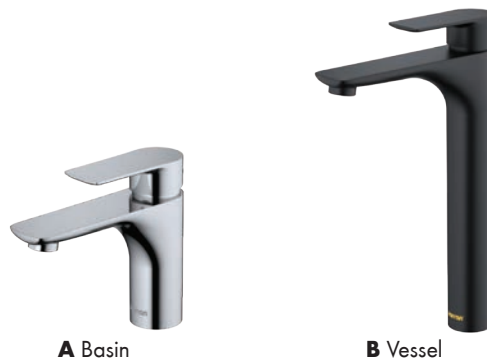
- Solid brass construction, high quality finishes and premium components ensure long-lasting performance
- All standard US 3/8" plumbing connections and standard 1-3/8" diameter opening
- Flow rate: 1.2 GPM / NSF Approved
- Included: Matching pop-up drain, pre-installed water lines and mounting hardware for a simple installation



	Type	Faucet Height	Spout Height	Spout Reach	Chrome Item #	Matte Black Item #	Oil Rubbed Bronze Item #	Stainless Steel Item #
A	Basin / 1-Hole	6-5/8"	3-7/8"	4-5/8"	KARKBF410C	KARKBF410MB	KARKBF410ORB	KARKBF410SS
B	Vessel / 1-Hole	11-5/8"	8-7/8"	5-1/4"	KARKBF412C	KARKBF412MB	KARKBF412ORB	KARKBF412SS
C	Widespread / 3-Hole	6-1/4"	4"	4-5/8"	KARKBF414C	KARKBF414MB	KARKBF414ORB	KARKBF414SS
D	Centerset / 2-Hole	7-3/8"	5-1/8"	4-5/8"	KARKBF416C	KARKBF416MB	KARKBF416ORB	KARKBF416SS

Kayes Collection

- Solid brass construction, high quality finishes and premium components ensure long-lasting performance
- All standard US 3/8" plumbing connections and standard 1-3/8" diameter opening
- Flow rate: 1.2 GPM / NSF Approved
- Included: Matching pop-up drain, pre-installed water lines and mounting hardware for a simple installation



	Type	Faucet Height	Spout Height	Spout Reach	Chrome Item #	Matte Black Item #	Stainless Steel Item #
A	Basin / 1-Hole	5-13/16"	3-13/16"	4-13/16"	KARKBF420C	KARKBF420MB	KARKBF420SS
B	Vessel / 1-Hole	12-5/16"	10-5/16"	5-5/16"	KARKBF422C	KARKBF422MB	KARKBF422SS

BATHROOM FAUCETS



Dartford Collection

- Solid brass construction, high quality finishes and premium components ensure long-lasting performance
- All standard US 3/8" plumbing connections and standard 1-3/8" diameter opening
- Flow rate: 1.2 GPM / NSF Approved
- Included: Matching pop-up drain, pre-installed water lines and mounting hardware for a simple installation

	Type	Faucet Height	Spout Height	Spout Reach	Chrome Item #	Matte Black Item #	Stainless Steel Item #
A	Basin / 1-Hole	7-11/16"	3-5/8"	5-7/8"	KARKBF430C	KARKBF430MB	KARKBF430SS
B	Vessel / 1-Hole	13-5/8"	9-9/16"	5-7/8"	KARKBF432C	KARKBF432MB	KARKBF432SS



Kassel Collection

- Solid brass construction, high quality finishes and premium components ensure long-lasting performance
- All standard US 3/8" plumbing connections and standard 1-3/8" diameter opening
- Flow rate: 1.2 GPM / NSF Approved
- Included: Matching pop-up drain, pre-installed water lines and mounting hardware for a simple installation

	Type	Faucet Height	Spout Height	Spout Reach	Chrome Item #	Matte Black Item #	Stainless Steel Item #
A	Basin / 1-Hole	7-11/16"	3-5/8"	5-7/8"	KARKBF440C	KARKBF440MB	KARKBF440SS
B	Vessel / 1-Hole	13-5/8"	9-9/16"	5-7/8"	KARKBF442C	KARKBF442MB	KARKBF442SS



Fulham Collection

- Solid brass construction, high quality finishes and premium components ensure long-lasting performance
- All standard US 3/8" plumbing connections and standard 1-3/8" diameter opening
- Flow rate: 1.2 GPM / NSF Approved
- Included: Matching pop-up drain, pre-installed water lines and mounting hardware for a simple installation

	Type	Faucet Height	Spout Height	Spout Reach	Chrome Item #	Matte Black Item #	Stainless Steel Item #
A	Widespread / 3-Hole	5"	3-3/16"	5-1/8"	KARKBF450C	KARKBF450MB	KARKBF450SS

BASKET STRAINERS & DISPOSAL FLANGES



Basket Strainers for Quartz & Acrylic Sinks



	Item #	Type	Fits Drain Opening Size	Size	Construction	Color
A	KARQBSBI	Basket Strainer for Quartz Sinks	3-1/2"	4-1/2" x 3-1/4"	Corrosion Resistant, ABS Plastic	Bisque
B	KARQBSBL	Basket Strainer for Quartz Sinks	3-1/2"	4-1/2" x 3-1/4"	Corrosion Resistant, ABS Plastic	Black
C	KARQBSBR	Basket Strainer for Quartz Sinks	3-1/2"	4-1/2" x 3-1/4"	Corrosion Resistant, ABS Plastic	Brown
D	KARQBSCN	Basket Strainer for Quartz Sinks	3-1/2"	4-1/2" x 3-1/4"	Corrosion Resistant, ABS Plastic	Concrete
E	KARQBSGR	Basket Strainer for Quartz Sinks	3-1/2"	4-1/2" x 3-1/4"	Corrosion Resistant, ABS Plastic	Gray
F	KARQBSWH	Basket Strainer for Quartz Sinks	3-1/2"	4-1/2" x 3-1/4"	Corrosion Resistant, ABS Plastic	White
G	KARABSBI	Basket Strainer for Acrylic Sinks	3-1/2"	4-1/2" x 3-1/4"	Corrosion Resistant, ABS Plastic	Bisque
H	KARABSWH	Basket Strainer for Acrylic Sinks	3-1/2"	4-1/2" x 3-1/4"	Corrosion Resistant, ABS Plastic	White

Disposal Flanges for Quartz & Acrylic Sinks



	Item #	Type	Fits Drain Opening Size	Size	Construction	Color
A	KARQDFBI	Disposal Flange for Quartz Sinks	3-1/2"	4-1/2" x 1-1/4"	Corrosion Resistant, ABS Plastic	Bisque
B	KARQDFBL	Disposal Flange for Quartz Sinks	3-1/2"	4-1/2" x 1-1/4"	Corrosion Resistant, ABS Plastic	Black
C	KARQDFBR	Disposal Flange for Quartz Sinks	3-1/2"	4-1/2" x 1-1/4"	Corrosion Resistant, ABS Plastic	Brown
D	KARQDFCN	Disposal Flange for Quartz Sinks	3-1/2"	4-1/2" x 1-1/4"	Corrosion Resistant, ABS Plastic	Concrete
E	KARQDFGR	Disposal Flange for Quartz Sinks	3-1/2"	4-1/2" x 1-1/4"	Corrosion Resistant, ABS Plastic	Gray
F	KARQDFWH	Disposal Flange for Quartz Sinks	3-1/2"	4-1/2" x 1-1/4"	Corrosion Resistant, ABS Plastic	White
G	KARADFBFI	Disposal Flange for Acrylic Sinks	3-1/2"	4-1/2" x 1-1/4"	Corrosion Resistant, ABS Plastic	Bisque
H	KARADFWH	Disposal Flange for Acrylic Sinks	3-1/2"	4-1/2" x 1-1/4"	Corrosion Resistant, ABS Plastic	White

Disposal Flanges for Quartz & Acrylic Sinks

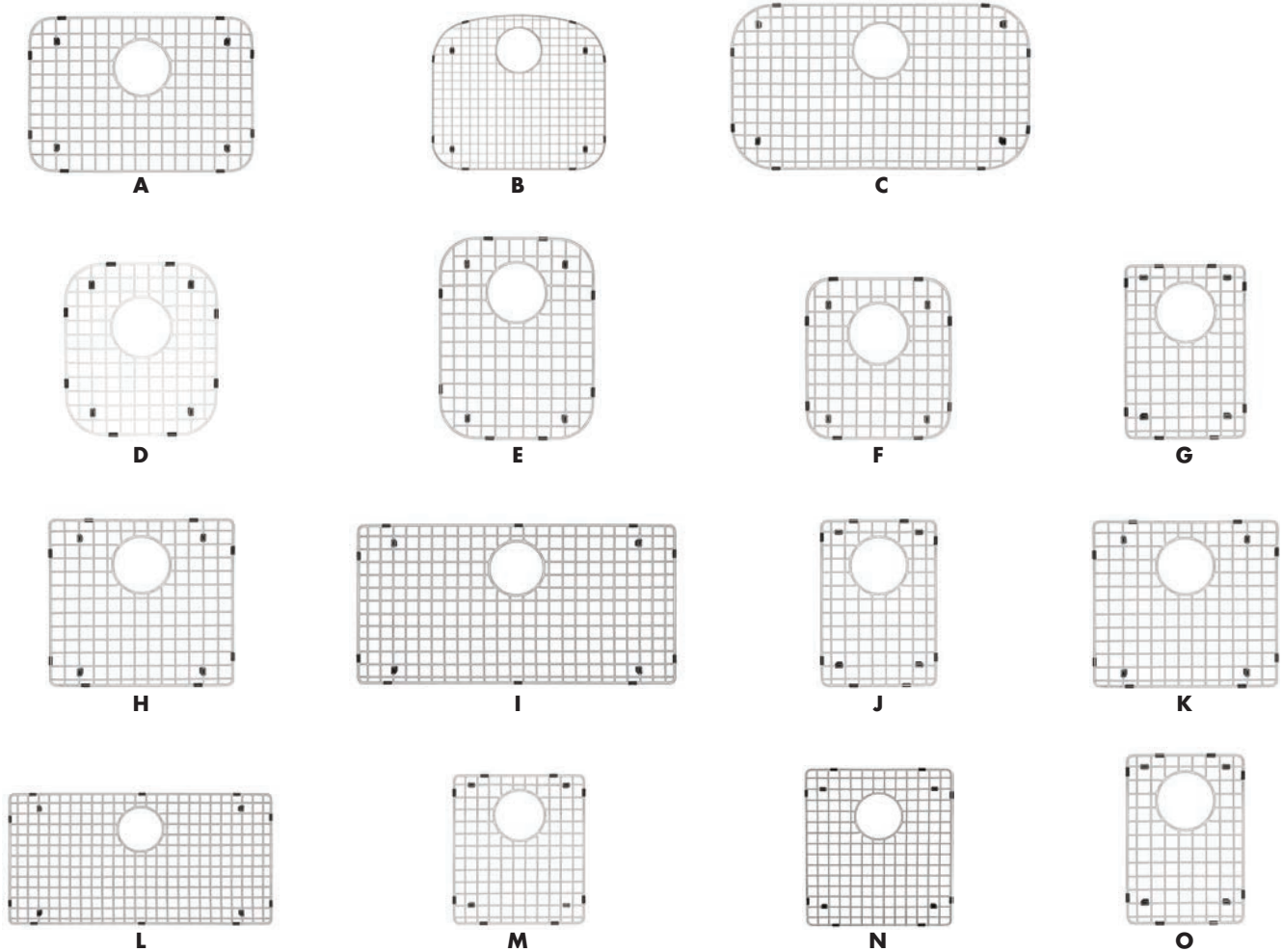


	Item #	Type	Fits Drain Opening Size	Construction	Finish
A	KARL1	Basket Strainer for All Sinks	3-1/2"	Stainless Steel	Polished
B	KARL2	Basket Strainer for All Sinks	3-1/2"	Stainless Steel with SlimShield Cap	Stainless Steel
C	KARL2DF	Disposal Flange for All Sinks	3-1/2"	Stainless Steel with SlimShield Cap	Stainless Steel

SINK GRIDS



Stainless Steel Sink Grids

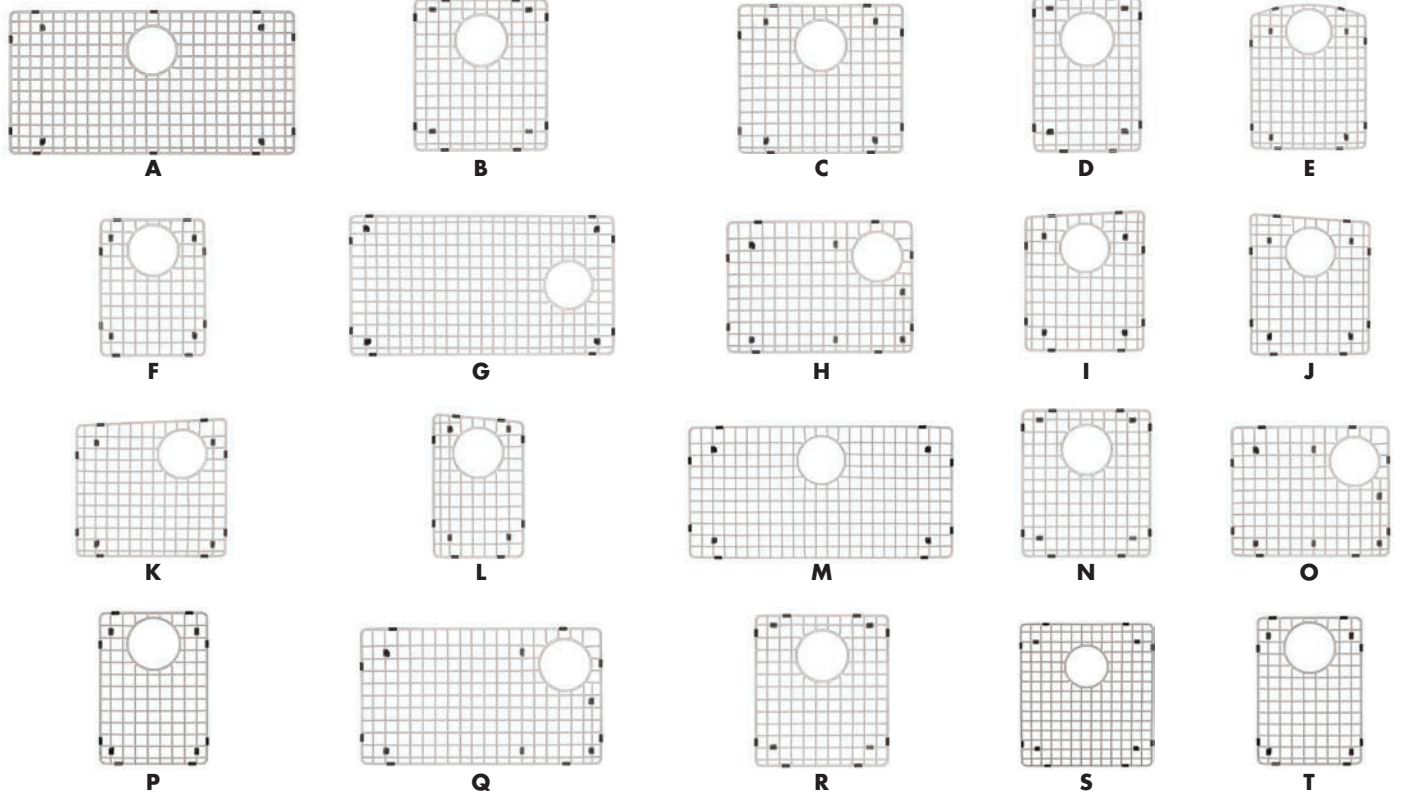


Item #	Designed for Karran Sink Model	Includes	Construction	Finish
A	KARGR3005 Fits E-320, U-2418, Q-320	Plastic Feet	Solid T304 Stainless Steel	Stainless Steel
B	KARGR3006 Fits E-330, U-2321	Plastic Feet	Solid T304 Stainless Steel	Stainless Steel
C	KARGR3004 Fits E-340, U-3018, Q-340	Plastic Feet	Solid T304 Stainless Steel	Stainless Steel
D	KARGR3001 Fits E-350, U-5050, Q-350	Plastic Feet	Solid T304 Stainless Steel	Stainless Steel
E	KARGR3002 Fits E-360R, U-6040 large bowl	Plastic Feet	Solid T304 Stainless Steel	Stainless Steel
F	KARGR3003 Fits E-360R, U-6040, E-315, U-1517 small bowl	Plastic Feet	Solid T304 Stainless Steel	Stainless Steel
G	KARGR5001 Fits E-410, E-415	Plastic Feet	Solid T304 Stainless Steel	Stainless Steel
H	KARGR5002 Fits E-420	Plastic Feet	Solid T304 Stainless Steel	Stainless Steel
I	KARGR5003 Fits E-440	Plastic Feet	Solid T304 Stainless Steel	Stainless Steel
J	KARGR1001 Fits E-510	Plastic Feet	Solid T304 Stainless Steel	Stainless Steel
K	KARGR1002 Fits E-520, E-525, E-528	Plastic Feet	Solid T304 Stainless Steel	Stainless Steel
L	KARGR1003 Fits E-540	Plastic Feet	Solid T304 Stainless Steel	Stainless Steel
M	KARGR1004 Fits E-550	Plastic Feet	Solid T304 Stainless Steel	Stainless Steel
N	KARGR1005 Fits E-560 large bowl	Plastic Feet	Solid T304 Stainless Steel	Stainless Steel
O	KARGR1006 Fits E-560 small bowl	Plastic Feet	Solid T304 Stainless Steel	Stainless Steel

SINK GRIDS



Stainless Steel Sink Grids



Item #	Designed for Karran Sink Model	Includes	Construction	Finish
A	KARGR6001 Fits QA-740, QAR-740	Plastic Feet	Solid T304 Stainless Steel	Stainless Steel
B	KARGR6002 Fits QA-750, QAR-750	Plastic Feet	Solid T304 Stainless Steel	Stainless Steel
C	KARGR6003 Fits QA-760 large bowl / QAR-760 large bowl	Plastic Feet	Solid T304 Stainless Steel	Stainless Steel
D	KARGR6004 Fits QA-760 small bowl / QAR-760 small bowl	Plastic Feet	Solid T304 Stainless Steel	Stainless Steel
E	KARGR6010 Fits QT-610 / QU-610 large bowl	Plastic Feet	Solid T304 Stainless Steel	Stainless Steel
F	KARGR6011 Fits QT-610 / QU-610 small bowl	Plastic Feet	Solid T304 Stainless Steel	Stainless Steel
G	KARGR6012 Fits QT-670, QU-670	Plastic Feet	Solid T304 Stainless Steel	Stainless Steel
H	KARGR6013 Fits QT-671, QU-671	Plastic Feet	Solid T304 Stainless Steel	Stainless Steel
I	KARGR6005 Fits QT-710 / QU-710 left bowl	Plastic Feet	Solid T304 Stainless Steel	Stainless Steel
J	KARGR6006 Fits QT-710 /QU-710 right bowl	Plastic Feet	Solid T304 Stainless Steel	Stainless Steel
K	KARGR6007 Fits QT-711 / QU-711 left bowl	Plastic Feet	Solid T304 Stainless Steel	Stainless Steel
L	KARGR6008 Fits QT-711 /QU-711 right bowl	Plastic Feet	Solid T304 Stainless Steel	Stainless Steel
M	KARGR6009 Fits QT-712, QU-712	Plastic Feet	Solid T304 Stainless Steel	Stainless Steel
N	KARGR6017 Fits QT-720 / QU-720	Plastic Feet	Solid T304 Stainless Steel	Stainless Steel
O	KARGR6018 Fits QT-721 / QU-721 left bowl	Plastic Feet	Solid T304 Stainless Steel	Stainless Steel
P	KARGR6019 Fits QT-721 /QU-721 right bowl	Plastic Feet	Solid T304 Stainless Steel	Stainless Steel
Q	KARGR6020 Fits QT-722 / QU-722	Plastic Feet	Solid T304 Stainless Steel	Stainless Steel
R	KARGR6014 Fits QT-810 / QU-810	Plastic Feet	Solid T304 Stainless Steel	Stainless Steel
S	KARGR6015 Fits QT-811 / QU-811 large bowl	Plastic Feet	Solid T304 Stainless Steel	Stainless Steel
T	KARGR6016 Fits QT-811 / QU-811 small bowl	Plastic Feet	Solid T304 Stainless Steel	Stainless Steel

POP-UP DRAINS & SOAP DISPENSERS



Brass Pop-Up Drains

- Made of Brass
- Designed to fit in US standard 1-3/4" drain openings
- Designed for bathroom vanity sinks



A



B



C



D



E



F



G



H

	Item #	Designed for use with	Finish
A	KARPU25C	Vanity Bowls without Overflows	Chrome
B	KARPU25SS	Vanity Bowls without Overflows	Stainless Steel
C	KARPU25MB	Vanity Bowls without Overflows	Matte Black
D	KARPUOF25C	Vanity Bowls with Overflows	Chrome
E	KARPUOF25SS	Vanity Bowls with Overflows	Stainless Steel
F	KARPUOF25MB	Vanity Bowls with Overflows	Matte Black
G	KARDGOF	Vanity bowls that require an overflow system	Chrome
H	KARDRAINPOPOF	Vanity bowls that require an overflow system	Chrome



A Traditional



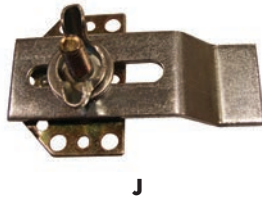
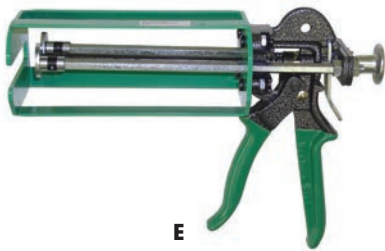
B Contemporary

Soap Dispensers

- Deck-mounted soap dispensers
- Holds 12 oz of liquid soap or lotion

	Style	Overall Height	Spout Height	Spout Reach	Diameter	Chrome Item #	Matte Black Item #	Stainless Steel Item #
A	Traditional	11-1/2"	1-1/2"	2-3/4"	2-1/4"	KARSD25C	KARSD25MB	KARSD25SS
B	Contemporary	12-1/4"	2-3/4"	3"	2-1/4"	KARSD35C	KARSD35MB	KARSD35SS

FABRICATION ACCESSORIES



Item #	Description
A	KARBIT45DEG Router bit: 45° Bevel Bit - 1/2" shank, 45° bevel, over-sized bearing - for 1/2" solid surface
B	KARBIT24DEG Router bit: 24° Bevel Bit - 1/2" shank, 24° bevel, over-sized bearing - for 1/2" solid surface
C	KARBITLAM Router bit: 10° Bevel Bit - 1/2" shank, 10° bevel, over-sized bearing - for laminate and 1/2" solid surface
D	KARBITPFORM Router bit: Postform Bit - 1/4" shank, 15° bevel, over-sized bearing - for postform laminate
E	KARAG Adhesive Gun - manual applicator gun for 250ml seaming adhesive cartridges
F	KARBISSA Bisque seaming adhesive (250ml) cartridge & 3 mixing tips - bonds sinks to laminate & solid surface
	KARBLSSA Black seaming adhesive (250ml) cartridge & 3 mixing tips - bonds sinks to laminate & solid surface
	KARBRISSA Brown seaming adhesive (250ml) cartridge & 3 mixing tips - bonds sinks to laminate & solid surface
	KARWHISA White seaming adhesive (250ml) cartridge & 3 mixing tips - bonds sinks to laminate & solid surface
G	KARTIPS Cartridge mixing tip - for 250ml seaming adhesive cartridge, 20 per pack
H	KARLUSTERPRO Luster Pro - a cleaning solution specially formulated to shine and protect quartz sinks, 8 fl. oz.
I	KARPOLISHKIT Polishing kit - final finish polish for Edge stainless steel sinks
J	KARDISCCLIP DISC Clips - used to install stainless steel sinks into stone, quartz and solid surface countertops, 10 per pack
K	KARPROPLUSTAPE Protect Plus Tape - specially formulated installation tape for quartz sinks
L	KARSCUFFBALL4M Scuffball - Maroon Scotch-Brite ball with 1/4" shank for refinishing satin brushed stainless steel sinks
M	KARFWF180 Non-Woven Flap Wheel - Scotch-Brite flap wheel (180 grit) for refinishing Edge sink bowl walls during install



KARRAN[®]



 **WÜRTH**

WÜRTH LOUIS AND COMPANY

KARRAN[®]

Sink and Faucet Catalog

Würth Louis and Company

895 Columbia Street
Brea, CA 92821
(714) 529-1771
(800) 422-4389
Fax: (800) 446-9452
www.wurthlac.com
LP1624

Other locations:

Anaheim, CA
Benton, AR
Boise, ID
Denver, CO
Grand Prairie, TX
Houston, TX

Idaho Falls, ID
Lacey, WA
Las Vegas, NV
Oklahoma City, OK
Phoenix, AZ
Portland, OR

Post Falls, ID
Salt Lake City, UT
San Antonio, TX
San Marcos, CA
St. George, UT
West Jordan, UT