

**SECTION N - TABLE OF CONTENTS**

**Section N Contents:**

Support Brackets ..... 2-10  
 Floating Brackets/Shelves..... 11-13  
 Shelf Supports ..... 14-21  
 Hanging Rail Systems.....22  
 Closet Tubing & Accessories..... 23-29  
 Closet Accessories ..... 30-44  
 Sidelines Closet Accessories.....45-56



A  
B  
C  
D  
E  
F  
G  
H  
I  
J  
K  
L  
M  
N  
O  
P  
Q  
R  
S  
T  
U  
V  
W  
X  
Y



**A WORKSTATION BRACKETS**



**Shelf & Countertop Supports**  
**Rigid, Heavy Duty**



- Load rating 1,000 lbs. per pair
  - 1/8" steel
  - Multiple 1/4" mounting hole locations (mounting hardware not included)
  - For use in workbenches, workstations, garage storage, ADA stations, computer stations, etc.
  - Reversible design makes brackets versatile and easy to use
  - Packaged in equal quantities of "rights" and "lefts"
  - The six larger sizes have a 3" x 3" - 45° notch that allows for wall cleat and wire run clearance
- Packing and sold in: As shown below. Available in any quantity of pairs.

Almond Item #	Black Item #	Gray Item #	Primed Item #	Stainless Steel Item #	White Item #	Box Qty
<b>5" Shelf Length x 8" Wall Length</b>						
PROWSB05X08-AL	PROWSB05X08-BL	PROWSB05X08-GR	-	-	PROWSB05X08-WH	5 Pair
<b>8" Shelf Length x 12" Wall Length</b>						
PROWSB08X12-AL	PROWSB08X12-BL	PROWSB08X12-GR	-	-	PROWSB08X12-WH	5 Pair
<b>12" Shelf Length x 18" Wall Length</b>						
-	PROWSB12X18-BL	PROWSB12X18-GR	-	-	PROWSB12X18-WH	3 Pair
<b>15" Shelf Length x 21" Wall Length</b>						
PROWSB15X21-AL	PROWSB15X21-BL	PROWSB15X21-GR	PROWSB15X21-PR	PROWSB15X21-SS	PROWSB15X21-WH	3 Pair
<b>18" Shelf Length x 18" Wall Length</b>						
PROWSB18X18-AL	PROWSB18X18-BL	PROWSB18X18-GR	PROWSB18X18-PR	-	PROWSB18X18-WH	3 Pair
<b>18" Shelf Length x 24" Wall Length</b>						
PROWSB18X24-AL	PROWSB18X24-BL	PROWSB18X24-GR	PROWSB18X24-PR	-	PROWSB18X24-WH	3 Pair
<b>24" Shelf Length x 24" Wall Length</b>						
PROWSB24X24-AL	PROWSB24X24-BL	PROWSB24X24-GR	-	-	PROWSB24X24-WH	3 Pair
<b>24" Shelf Length x 29" Wall Length</b>						
PROWSB24X29-AL	PROWSB24X29-BL	PROWSB24X29-GR	-	-	PROWSB24X29-WH	2 Pair

**SHELF & COUNTERTOP SUPPORTS**



**Speed Brace, Heavy Duty Brackets**



- Load rating at 1,000 lbs. per pair
- 1-1/2" x 1-1/2" notching system for quick alignment and installation (3/4" x 1-1/2" on FCSB5X8 Series)
- Cable management holes and countersunk screw holes
- 10 piece Speed Brace Anchors: FCSB-ANCHOR
- Sold by the each

Size	Black Item #	Prime Item #	Stainless Steel Item #	White Item #
5" Shelf Length x 8" Wall Length	FCSB5X8-BL	-	-	FCSB5X8-WH
8" Shelf Length x 12" Wall Length	FCSB8X12-BL	FCSB8X12-PRIME	FCSB8X12-SS	FCSB8X12-WH
15" Shelf Length x 18" Wall Length	FCSB15X18-BL	FCSB15X18-PR	FCSB15X18-SS	FCSB15X18-WH
21" Shelf Length x 24" Wall Length	FCSB21X24-BL	FCSB21X24-PR	FCSB21X24-SS	FCSB21X24-WH
21" Shelf Length x 28" Wall Length	FCSB21X27-BL	FCSB21X28-PR	FCSB21X27-SS	FCSB21X27-WH

**Concealed Brackets**

- 1/4" steel
- Includes mounting hardware 3/8" x 4" carriage bolts, hex nuts and flat washers
- Mounts directly to wall studs
- Load limit over 1,000 lb. per pair
- All welds on reverse for easy, clean install
- Sold by the pair



Item #	Depth	Overall Height	Color
<b>9" Support Arm Length</b>			
PROWCB-09AL	9"	12"	Almond
PROWCB-09BL	9"	12"	Black
PROWCB-09GR	9"	12"	Gray
PROWCB-09WH	9"	12"	White
<b>12" Support Arm Length</b>			
PROWCB-12AL	12"	12"	Almond
PROWCB-12BL	12"	12"	Black
PROWCB-12GR	12"	12"	Gray
PROWCB-12WH	12"	12"	White
<b>18" Support Arm Length</b>			
PROWCB-18AL	18"	18"	Almond
PROWCB-18BL	18"	18"	Black
PROWCB-18GR	18"	18"	Gray
PROWCB-18WH	18"	18"	White
<b>24" Support Arm Length</b>			
PROWCB-24AL	24"	18"	Almond
PROWCB-24BL	24"	18"	Black
PROWCB-24GR	24"	18"	Gray
PROWCB-24WH	24"	18"	White



A  
B  
C  
D  
E  
F  
G  
H  
I  
J  
K  
L  
M  
N  
O  
P  
Q  
R  
S  
T  
U  
V  
W  
X  
Y

A  
B  
C  
D  
E  
F  
G  
H  
I  
J  
K  
L  
M  
N  
O  
P  
Q  
R  
S  
T  
U  
V  
W  
X  
Y

**SHELF & COUNTERTOP SUPPORTS**



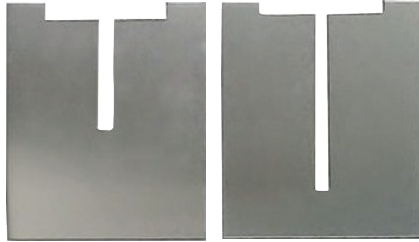
**EH Series Surface Mount Bracket**

**Rakks®**

- Rakks Counter Support Brackets keep work areas open and accessible
- They provide heavy duty support for counters up to 30" deep while improving the handicapped accessibility and ergonomics of the work area
- Rakks counter support brackets are manufactured from easy-to-recycle structural aluminum
- Sold by the each

Item #	Size	Counter Depth	Weight Capacity	Finish
<b>Surface Mount - 12" x 9"</b>				
RKKEH-1209	12" x 9"	13"	650 lb per bracket	Mill
RKKEH-1209-A	12" x 9"	13"	650 lb per bracket	Almond
RKKEH-1209-B	12" x 9"	13"	650 lb per bracket	Black
RKKEH-1209-W	12" x 9"	13"	650 lb per bracket	Off-White/Primed
<b>Surface Mount - 12" x 12"</b>				
RKKEH-1212	12" x 12"	18"	650 lb per bracket	Mill
RKKEH-1212-A	12" x 12"	18"	650 lb per bracket	Almond
RKKEH-1212-B	12" x 12"	18"	650 lb per bracket	Black
RKKEH-1212-W	12" x 12"	18"	650 lb per bracket	Off-White/Primed
<b>Surface Mount - 18" x 18"</b>				
RKKEH-1818	18" x 18"	24"	450 lb per bracket	Mill
RKKEH-1818-A	18" x 18"	24"	450 lb per bracket	Clear Ano
RKKEH-1818-B	18" x 18"	24"	450 lb per bracket	Black
RKKEH-1818-W	18" x 18"	24"	450 lb per bracket	Off-White/Primed
<b>Surface Mount - 18" x 24"</b>				
RKKEH-1824	18" x 24"	30"	450 lb per bracket	Mill
RKKEH-1824-A	18" x 24"	30"	450 lb per bracket	Clear Ano
RKKEH-1824-B	18" x 24"	30"	450 lb per bracket	Black
RKKEH-1824-W	18" x 24"	30"	450 lb per bracket	Off-White/Primed
<b>Flush Mount - 12" x 9"</b>				
RKKEH-1209FM	12" x 9"	13"	430 lb per bracket	Mill
RKKEH-1209FM-B	12" x 9"	13"	430 lb per bracket	Black
RKKEH-1209FM-W	12" x 9"	13"	430 lb per bracket	Off-White/Primed
<b>Flush Mount - 12" x 12"</b>				
RKKEH-1212FM	12" x 12"	18"	430 lb per bracket	Mill
RKKEH-1212FM-A	12" x 12"	18"	430 lb per bracket	Clear Ano
RKKEH-1212FM-B	12" x 12"	18"	430 lb per bracket	Black
RKKEH-1212FM-W	12" x 12"	18"	430 lb per bracket	Off-White/Primed
<b>Flush Mount - 18" x 18"</b>				
RKKEH-1818FM	18" x 18"	24"	300 lb per bracket	Mill
RKKEH-1818FM-A	18" x 18"	24"	300 lb per bracket	Clear Ano
RKKEH-1818FM-B	18" x 18"	24"	300 lb per bracket	Black
RKKEH-1818FM-W	18" x 18"	24"	300 lb per bracket	Off-White/Primed
<b>Flush Mount - 18" x 24"</b>				
RKKEH-1824FM	18" x 24"	30"	300 lb per bracket	Mill
RKKEH-1824FM-A	18" x 24"	30"	300 lb per bracket	Clear Ano
RKKEH-1824FM-B	18" x 24"	30"	300 lb per bracket	Black
RKKEH-1824FM-W	18" x 24"	30"	300 lb per bracket	Off-White/Primed

**SHELF & COUNTERTOP SUPPORTS**



**Inside Wall Counter Support Face Plate**



- Designed to work with Rakks EH-1818, EH-1824, EH-1212 and EH-1209 Flush-Mount Counter Supports
- Adhesive backed plate fits over the supporting arm of the bracket and eliminates the need to patch and fill the drywall
- Sold by the each

Item #	Size	Finish	Use With
RKKEH-FP22	2" x 2" x 1/4"	Aluminum	EH-1818, EH-1212 and EH-1209 Flush Mount Supports
RKKEH-FP23	2" x 3" x 3/16"	Aluminum	EH-1824 Flush Mount Supports



**Concealed Brackets With Upper Extension**



- 1/4" steel
- Includes mounting hardware 3/8" x 4" carriage bolts, hex nuts and flat washers
- Mounts directly to wall studs
- Load limit over 1,000 lb. per pair
- All welds on reverse for easy, clean install
- Sold by the each in multiples of 2

Item #	Depth	Overall Height	Color	Box Qty
<b>9" Support Arm Length</b>				
PROWCBE-09BL	9"	20"	Black	2 Each
PROWCBE-09WH	9"	20"	White	2 Each
<b>12" Support Arm Length</b>				
PROWCBE-12BL	12"	20"	Black	2 Each
PROWCBE-12WH	12"	20"	White	2 Each
<b>18" Support Arm Length</b>				
PROWCBE-18BL	18"	26"	Black	2 Each
PROWCBE-18WH	18"	26"	White	2 Each
<b>24" Support Arm Length</b>				
PROWCBE-24BL	24"	26"	Black	2 Each
PROWCBE-24WH	24"	26"	White	2 Each

A  
B  
C  
D  
E  
F  
G  
H  
I  
J  
K  
L  
M  
N  
O  
P  
Q  
R  
S  
T  
U  
V  
W  
X  
Y

**A SHELF BRACKETS**



**Rigid Extra Heavy Duty Epoxy Coated L-Bracket**



- Load rated at up to 1,000 lbs. per pair
- Corrosion resistant epoxy coated finish
- 5mm bar stock
- Mount into or through a wooden stud using lag bolts 5/16" x 3" or longer
- Sold by the each

Dimensions	Black Epoxy Item #	White Epoxy Item #
11-1/2" x 8"	RVSI208-12BK	RVSI208-12WH
15-1/2" x 10"	RVSI208-16BK	RVSI208-16WH
19-1/2" x 13"	RVSI208-20BK	RVSI208-20WH
21-3/8" x 14-1/4"	RVSI208-22BK	RVSI208-22WH



**Rigid Extra Heavy Duty Ultimate L-Bracket**



- Load rated at 1,200 lbs. per pair
- Welded steel bracing
- 3/4" steel strut for superior weight capacity
- Often used for countertop installations

Dimensions	Black Item #	White Item #
11.6" x 8"	KV208-12BK	KV208-12WH
15.5" x 10"	KV208-16BK	KV208-16WH
19.5" x 13.1"	KV208-20BK	KV208-20WH
21.4" x 14.2"	KV208-22BK	KV208-22WH

**Visit us on our website: [wurthlac.com](http://wurthlac.com)**

Shop By Category

Home

**Würth Louis and Company**  
Introduces:

**RGB TUNABLE FLEXTAPE®**

Creating dramatic lighting with 16 million color combinations is now a reality with RGB Standard color-changing FlexTape®.



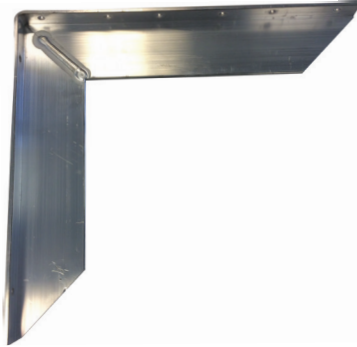
**NOW HIRING!**

Apply at:  
[wurthlac.com/careers](http://wurthlac.com/careers)

**SUPPLY CHAIN CHALLENGES?**  
We have you COVERED.

LEARN MORE

**SHELF & COUNTERTOP SUPPORTS**

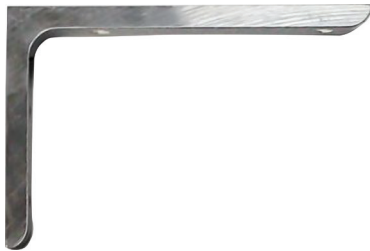


**EH B Series Surface Mount Bench Support Bracket**

**Rakks®**

- Used for seating applications incorporating 5" wooden planking
- The supporting arm is pre-drilled with 12 holes to provide secure installation
- Manufactured from 2" x 3" "T" to provide maximum stiffness
- Sold by the each

Item #	Weight Capacity	Size	Finish
RKKEH-1416B	450 lb per bracket	14-3/4" x 15-3/4"	Mill



**FB Sill Support Bracket**

**Rakks®**

- Manufactured from structural aluminum angle
- These brackets can be used anywhere low profile support or bracing is required
- Sold by the each

Item #	Weight Capacity	Size	Finish
RKKFB-0406	150 lb per bracket	4" D x 6" H	Mill



**EH Series Vanity Brackets**

**Rakks®**

- ADA compliant aluminum vanity brackets simplify and reduce the cost of installing sinks and provide a stable and sturdy mounting surface for custom-built enclosures
- Vanity Brackets are supplied with wooden strips on the front faces to provide for the convenient mounting, or removal, of laminated or solid surface panels
- Sold by the each

Item #	Weight Capacity	Size	Finish
RKKEH-1818-LV	450 lb. per Bracket	18" x 21-1/2"	Mill

A  
B  
C  
D  
E  
F  
G  
H  
I  
J  
K  
L  
M  
N  
O  
P  
Q  
R  
S  
T  
U  
V  
W  
X  
Y

**COUNTERTOP SUPPORTS & SHELF BRACKETS**

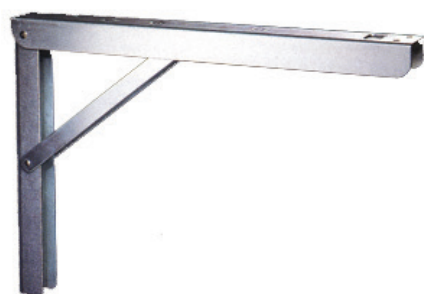


**Stealth Brace**

- Support countertop and bar overhangs with no visible kicker or corbels
- Countersunk screwholes
- Simply route a 3-1/2" slot in the substrate and mount
- Sold by the each



	Size	Weight Capacity	Black Item #	Prime Item #	White Item #
<b>Standard Duty</b>	3-1/2" x 12" x 3/16"	300 lb per pair	FCSTEALTH	FCSTEALTH-PR	FCSTEALTH-WHITE
	3-1/2" x 16" x 3/16"	300 lb per pair	FCSBSTEALTH-16BL	FCSBSTEALTH-16PR	-
	3-1/2" x 24" x 3/16"	300 lb per pair	FCSBSTEALTH-24BL	FCSBSTEALTH-24PR	-
	3-1/2" x 30" x 3/16"	300 lb per pair	FCSTEALTH-30BL	FCSTEALTH-30PRIMED	-
<b>Heavy Duty</b>	3-1/2" x 12" x 1/4"	500 lb per pair	FCSBSTEALTHHD-12BL	FCSBSTEALTHHD-12PR	-
	3-1/2" x 16" x 3/8"	500 lb per pair	FCSBSTEALTHHD-16BL	-	-
	3-1/2" x 24" x 3/8"	500 lb per pair	FCSBSTEALTHHD-24BL	-	-
	3-1/2" x 30" x 3/8"	500 lb per pair	FCSBSTEALTHHD-30BL	-	-



**Folding Shelf Bracket, Heavy Duty**

- Locks in at 4 positions (Flat, 70°, 80°, 90°)
- Spring loaded to automatically lock
- Front locking lever makes releasing easy



Item #	Size	Finish	Load Rating
KV206L-12	11.81"D x 7.87"H x 1.18"W	Zinc	750 lbs per pair
KV206L-16	15.75"D x 10.63"H x 1.42"W	Zinc	880 lbs per pair



**Folding Shelf Bracket**

- Made of 304 Stainless Steel
- Screws not included



Item #	Size	Finish	Load Rating
SGEB303-EP	12-1/32"W x 6-1/2"H	Electro Polished	330 lbs. per pair



**Folding Shelf Bracket, Light Duty**

- Steel material
- Spring held in closed position

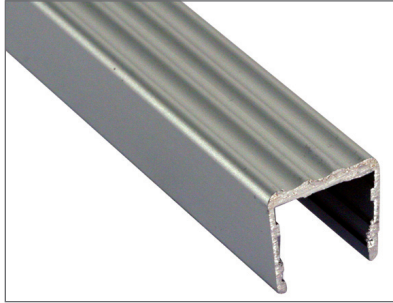


Item #	Size	Finish	Load Rating
USFT6579500503	10"D x 3-1/4"H x 1/2"W	Yellow Zinc	88 lbs.



**SHELF STIFFENERS & BRACKETS WITH CLOSET ROD SUPPORT**

A  
B  
C  
D  
E  
F  
G  
H  
I  
J  
K  
L  
M  
N  
O  
P  
Q  
R  
S  
T  
U  
V  
W  
X  
Y

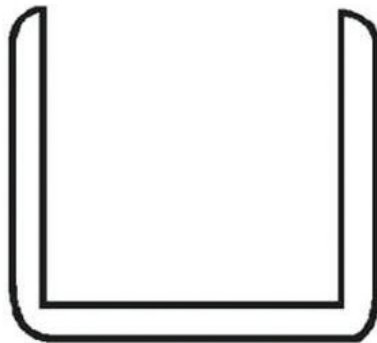


**Shelf Edging/Stiffener, Anodized Aluminum**

- For use on the edge of 3/4" material
- Used primarily for garage shelves for a "finished look"
- Also gives added support to the edge of the shelf



Item #	Finish	Length
PR5479-96AM	Anochrome	8'

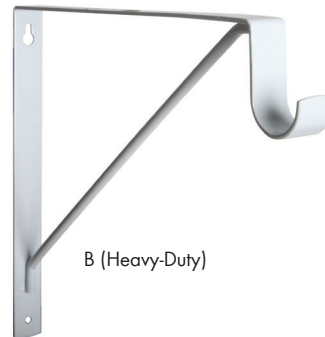


**U-Channel**

- Made of aluminum
- Combines shelf stiffeners and edge coverings
- Usable on all 3/4" boards
- 3/4" interior depth x 3/4" interior width
- Sold per each



Item #	Description	Length	Finish
PR5438-96AM	Aluminum U-Channel	8'	Clear Anodized Aluminum
PR5438-96WH	Aluminum U-Channel	8'	White



	Item #	Size	Finish	Gauge	Load Rating Per Pair	Shelf Depth	Shelf Platform	Accepts Rod Size Up To	Hook Depth	Sold In
A	KV1194WH	12.125"D x 9.625"H x 1.0"W	White	13	500 Lbs.	11" - 14"	10-1/4" - 10-3/4"	1-3/8"	3"H	Per Each
	KV1194CR	12.125"D x 9.625"H x 1.0"W	Cream	13	500 Lbs.	11" - 14"	10-1/4" - 10-3/4"	1-3/8"	3"H	Per Each
B	KV1195	12.5"D x 9.125"H x 0.937"W	White	12	500 Lbs.	11" - 14"	11"	1-3/8"	2-1/2"H	Per Each
	KV1195CR	12.5"D x 9.125"H x 0.937"W	Cream	12	500 Lbs.	11" - 14"	11"	1-3/8"	2-1/2"H	Per Each

**A BRACKETS WITH CLOSET ROD SUPPORT**



**Bracket With Oval Closet Rod Support**



- Made of steel, 3mm thickness
- Supports oval closet rod, 30 x 15mm
- Shelf material up to 14" deep
- Load capacity: 110 lbs
- Screws are included

Item #	Dimensions	Finish	Sold In
FUTOV1-CH	10-7/8"H x 11-3/4"D x 1"W	Chrome	Per Each

B  
C  
D  
E  
F  
G  
H  
I  
J  
K  
L  
M  
N  
O  
P  
Q  
R  
S  
T  
U  
V  
W  
X  
Y



**Closet Rod Bracket**



- This bracket is compatible with closet rod sizes from 1" - 1-3/8"
- You can now hang a closet rod on any wall with a stud!
- Comes with a faceplate to completely hide the 2" x 2" hole cut into the sheetrock to install the bracket
- Sold by the each

Item #	Description	Weight Capacity
SHBCR-12BL	Closet Rod Bracket, Black	150 lb
SHBCR-12WH	Closet Rod Bracket, White	150 lb

For dimensional line drawing, see our website.



**Closet Rod Bracket with Shelf Support**



- Perfect for any closet with a shelf (shelf not included)
- Aside from the bracket all you need to support your shelf is a cleat on the wall
- Comes with a faceplate to completely hide the 2" x 2" hole cut into the sheetrock to install the bracket
- Sold by the each

Item #	Description	Weight Capacity
SHBCRS-12BL	Closet Rod Bracket with Shelf Support, Black	150 lb
SHBCRS-12WH	Closet Rod Bracket with Shelf Support, White	150 lb

For dimensional line drawing, see our website.

## FLOATING BRACKETS



For dimensional line drawing, see our website.

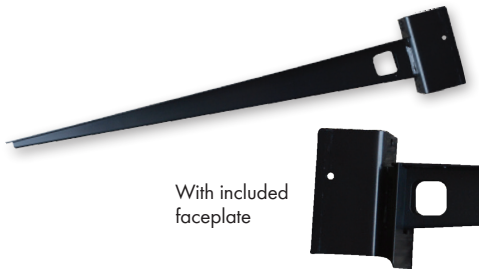
### Floating Vanity Brackets



- Innovative floating shelf brackets post sheetrock installation eliminates the need to patch and repaint sheet rock
- "U" shaped design allows for easy install after sheetrock with only a 2" x 2" hole
- Front holes at top and bottom allow for easy install and leveling
- 3/4" tube steel bars welded to "U" bracket to allow plenty of support for heavy items
- 3/4" tube allows for extra weight of floating vanity to be easily supported even with heavy granite or concrete counter tops
- Support bar can be cut to length as needed
- Accessory kit available, includes 1 Wall Cover, 1 End Cap, and 1 Mid Clip
- Patent Pending
- Sold by the each

Item #	Description	Weight Capacity
SHBFS-20	20" Floating Vanity Bracket	200 lb
SHBFS-20KIT-BL	Vanity Access Kit, Black	-
SHBFS-20KIT-WH	Vanity Access Kit, White	-

A  
B  
C  
D  
E  
F  
G  
H  
I  
J  
K  
L  
M  
N  
O  
P  
Q  
R  
S  
T  
U  
V  
W  
X  
Y



For dimensional line drawing, see our website.

### Concealed Floating Countertop Brackets



- Perfect for any floating countertops
- From laminate to granite and everything in between, these brackets are easy to install and stay out of your way
- Wire management hole
- Faceplate included for a finished look
- Patent Pending
- Sold by the each

Item #	Description	Weight Capacity
SHBCT-18BL	18" Bracket, Black	350 lb
SHBCT-18WH	18" Bracket, White	350 lb
SHBCT-22BL	22" Bracket, Black	350 lb
SHBCT-22WH	22" Bracket, White	350 lb

A  
B  
C  
D  
E  
F  
G  
H  
I  
J  
K  
L  
M  
N  
O  
P  
Q  
R  
S  
T  
U  
V  
W  
X  
Y

## FLOATING BRACKETS



### Floating Shelf Brackets



- Innovative floating shelf brackets post sheet rock
- Installation eliminates the need to patch and repaint sheet rock
- "U" shaped design allows for easy install after sheetrock with only a 2" x 2" hole
- Front holes at top and bottom allow for easy install and leveling
- 1/2" tube steel bars welded to "U" bracket to allow plenty of support for heavy items
- 1/2" tube allows for 2-1/4" thick, low profile shelf to slide over and still hide hole
- Patent Pending
- Sold by the each

For dimensional line drawing, see our website.

Item #	Weight Capacity
SHBFS-10	150 lb



### Floating Shelf Bracket, Concrete Walls



- Floating Shelf bracket but for walls that are concrete or brick
- Pre-drill into your wall and then use a concrete screw to install the bracket
- This bracket will be completely hidden by a 2-1/4" thick shelf
- No need to worry about your shelves sagging or falling off the wall
- Sold by the each

For dimensional line drawing, see our website.

Item #	Weight Capacity
SHBCFS-10	150 lb

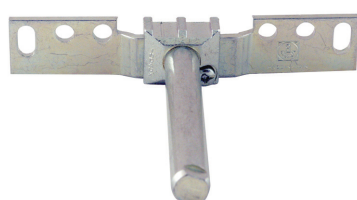


### Floating Shelf Bracket Set



- Maximum Load Capacity for shelf size 8"D x 35"L: 37.4 Lbs.
- Maximum Load Capacity for shelf size 12"D x 35"L: 25.3 Lbs.
- **Note: The Tests are achieved by 2 supports with a shelf length of 35". For every 18" additional shelf length, please add additional shelf support.**
- Completely concealed
- Can be adjusted in any direction

Item #	Description
PT632-500-105	Includes: (1) Wall Support, (1) Rod Mount, (4) Plastic Wall Plugs & (4) Phillips Screws



### Shelf Supports For Shelves Up To 2" Thick



- Fitting allows a shelf to be attached to a wall without any visible support
- Minimum shelf thickness of 7/8"
- Two supports are rated for 90 pound loads and three supports are rated for 135 lb. loads
- 1 set consists of: (1) shelf supporter, (1) hooking, anchors and screws

Item #
SYT3

**FLOATING SHELVES**



**Solid Wood Floating Shelves**

- Perfect for today's transitional and contemporary kitchen/bath
- System includes floating shelf, hanging brackets & hardware for mounting
- Hanging system safely supports 15 lbs. per foot of shelf length, exceeds KCMA requirements
- Shelves are 2-1/2" thick x 10" depth, trimmable to 2" depth
- Solid wood & wood veneer construction (Paint Grade is Poplar and MDF)



Species	Item #
<b>24" Length</b>	
Alder	OMFS0124QUF1
Cherry	OMFS0124CUF1
Hickory	OMFS0124HUF1
Maple	OMFS0124MUF1
Paint Grade	OMFS0124XUF1
<b>30" Length</b>	
Alder	OMFS0130QUF1
Cherry	OMFS0130CUF1
Hickory	OMFS0130HUF1
Maple	OMFS0130MUF1
Paint Grade	OMFS0130XUF1
<b>36" Length</b>	
Alder	OMFS0136QUF1
Cherry	OMFS0136CUF1
Hickory	OMFS0136HUF1
Maple	OMFS0136MUF1
Paint Grade	OMFS0136XUF1
Red Oak	OMFS0136OUF1

Species	Item #
<b>42" Length</b>	
Alder	OMFS0142QUF1
Cherry	OMFS0142CUF1
Hickory	OMFS0142HUF1
Maple	OMFS0142MUF1
Paint Grade	OMFS0142XUF1
<b>48" Length</b>	
Alder	OMFS0148QUF1
Cherry	OMFS0148CUF1
Hickory	OMFS0148HUF1
Maple	OMFS0148MUF1
Paint Grade	OMFS0148XUF1
Red Oak	OMFS0148OUF1



**Stainless Steel Floating Shelves**

- Complete turn-key system includes floating shelf, hanging brackets, hardware for mounting and instructions
- Individually cartoned
- Unique hanging system safely supports 20 pounds per running foot of shelf length, when installed per instructions
- Produced using 430 grade stainless steel



Item #	Size	Description
OMFS0124STUF1	24"L x 10"D x 2-1/2"H	Stainless Steel Floating Shelf Kit
OMFS0130STUF1	30"L x 10"D x 2-1/2"H	Stainless Steel Floating Shelf Kit
OMFS0136STUF1	36"L x 10"D x 2-1/2"H	Stainless Steel Floating Shelf Kit

A  
B  
C  
D  
E  
F  
G  
H  
I  
J  
K  
L  
M  
N  
O  
P  
Q  
R  
S  
T  
U  
V  
W  
X  
Y

**A METAL SHELF SUPPORTS/PINS**



**Spoon Shaped Shelf Support, 5mm & 1/4" Bores**



- 5mm bore spoon shaped supports have 3/8" L x 5/16" W shelf rest area
- 1/4" bore spoon shaped supports have a 1/2" L x 5/16" W shelf rest area
- 5mm bore pin is 3/8" L and 1/4" bore pin is 5/16" L
- Sold In: Full Box Quantities

Finish	Item #	Sold In
<b>5mm Bore</b>		
Brass	PG306-BR	100
Nickel	PG306-NK	100
<b>1/4" Bore</b>		
Brass	PG206-BR	100
Nickel	PG206-NK	100

B  
C  
D  
E  
F  
G  
H  
I  
J  
K  
L  
M  
N  
O  
P  
Q  
R  
S  
T  
U  
V  
W  
X  
Y



**Spoon Shaped Shelf Support, 5mm Bore**



- Pin Length: 5/16" (8mm)
- Shelf Rest: 5/16" (8mm) wide x 7/16" (11mm) long
- Sold In: Full Box Quantities

Item #	Description	Finish	Sold In
KV332-ANO	5mm Spoon Shaped Shelf Support	Anochrome	1,000



**Spoon Shaped Shelf Support, 1/4" Bore**



- For 1/4" hole
- Pin Length: 3/8" (9mm)
- Shelf Rest: 3/8" (9mm) wide x 1/2" (13mm) long
- Sold In: Full Box Quantities

Item #	Description	Finish	Sold In
KV331-ANO	1/4" Spoon Shaped Shelf Support	Anochrome	1,000

**ROD SHELF SUPPORTS & SHELF SUPPORT GROMMETS**



**Steel Rod Shaped Shelf Support  
5mm Bore With Center Stop**



- Overall rod length is 5/8"
- Sold by the each, available any quantity

Item #	Finish	Box Qty	Sold In
HA282.43.905	Zinc	1,000	Per Each



**Solid Steel Shelf Pin Rest, 5mm Bore**



- Solid steel nickel-plated shelf rest to fit 5mm hole borings
- Shelf support protrudes 19/32" and is 5/16" diameter
- Pin measures 5mm (3/16") dia. and is 5/16" long permitting pins to be introduced on both sides of a 5/8" thick wall
- Sold by the each

Item #	Box Qty	Sold In
SYX3014K	500	Per Each



**Shelf Support Grommet,  
5mm & 1/4" Bores**



- Sized to accept 5mm and 1/4" bore shelf pins
- 5mm grommet requires 7/32" (5.3mm) diameter hole size while 1/4" grommet requires 17/64" (6.7mm) diameter hole to accommodate grommet
- 5mm bore grommet depth of 3/16", while the 1/4" bore grommet depth is 1/4"
- Sold by the each, available any quantity

Shelf Pin Bore Size	Finish	Item #	Box Qty	Sold In
1/4"	Zinc	FE1284ZC	1,000	Per Each
1/4"	Brass	FE1284BR	1,000	Per Each

A  
B  
C  
D  
E  
F  
G  
H  
I  
J  
K  
L  
M  
N  
O  
P  
Q  
R  
S  
T  
U  
V  
W  
X  
Y

**A METAL SHELF SUPPORTS**

B  
C  
D  
E  
F  
G  
H  
I  
J  
K  
L  
M  
N  
O  
P  
Q  
R  
S  
T  
U  
V  
W  
X  
Y



**"L" Shaped Steel Shelf Support  
5mm & 1/4" Bores**



- "L" shaped supports have 5/8"L x 1/2"W shelf rest area
- Support has hole to accommodate screw for affixing to shelf
- 5mm bore pin length is 5/16", 1/4" bore pin length is 3/8"
- Sold by hundreds

Bore Size	Finish	With Hole	Item #	Sold In
<b>5mm Bore</b>				
5mm	Brass	Yes	PG707-BR	100
5mm	Nickel	Yes	PG707-NK	100
<b>1/4" Bore</b>				
1/4"	Brass	Yes	PG607-BR	100
1/4"	Bronze	Yes	PG607-BZ	100
1/4"	Nickel	Yes	PG607-NK	100
1/4"	Brass	No	PG606-BR	100
1/4"	Nickel	No	PG606-ZC	100



**"L" Shaped Metal Shelf Pins  
1/4" Bore**



- Pin length: 3/8" (9mm)
- Shelf Rest: 1/2" (9mm) wide x 11/16" (17mm) long

Item #	Finish	Sold In
KV346	Anochrome	Per Each
KV346BR	Brass Look	Per Each
KV346WAL	Walnut	Per Each



**"L" Shaped Brass Shelf Support  
5mm Bore**



- Pin Diameter: 4.7mm, for 5mm hole (use with KV129 rubber cushion)
- Pin Length: 5/16" (8mm)
- Dimensions: 1/2" (13mm) wide x 11/16" (17mm) long

Item #	Finish	Sold In
KV345NP	Nickel	Per Each
KV345WAL	Walnut	Per Each



**METAL & PLASTIC SHELF SUPPORTS**



**“L” Shaped Steel Shelf Support  
With Vinyl Tip, 5mm Bore**



- Pin length is 5/16” (8mm)
- Shelf support is 1/2” (13mm) wide x 1 1/16” (17mm) long

Item #	Support Finish	Vinyl Tip Color	Sold In
KV348BN	Brass	Brown	Per Each
KV348WH	Brass	White	Per Each
KV348-AL	Brass	Almond	Per Each



**Plastic Shelf Support With Steel Pin  
5mm Bore, Value Priced**



- Pin length is 5/16”
- Shelf rest area is 13/32”L x 7/16”W
- Plastic support with steel pin
- Sold by hundreds

Finish	Item #	Sold In
Clear	PG438CL	100
White	PG438WH	100
Almond	PG438AL	100
Brown	PG438BN	100

Visit us on our website: [wurthlac.com](http://wurthlac.com)

The screenshot shows the Wurth website interface. At the top, there are links for 'Wurth Louis and Company', 'Large Machinery Quote', and 'Feedback'. On the right, there are links for 'Register or Apply', 'Sign In', and 'En'. The main header features the WÜRTH logo, a search bar with the placeholder 'Enter search criteria here', and a shopping cart icon showing '\$0.00'. Below the header, there are navigation options: 'Shop By Category' and 'Home'. The main content area includes a large 'SEE SAFELY' banner with images of various safety glasses. To the right, there is a 'NOW HIRING!' banner with the Wurth logo and the text 'Apply at: wurthlac.com/careers'. Below that, there is a 'SUPPLY CHAIN CHALLENGES? We have you COVERED.' banner with a 'LEARN MORE' button and an image of a worker.

A  
B  
C  
D  
E  
F  
G  
H  
I  
J  
K  
L  
M  
N  
O  
P  
Q  
R  
S  
T  
U  
V  
W  
X  
Y

**A PLASTIC SHELF SUPPORTS**



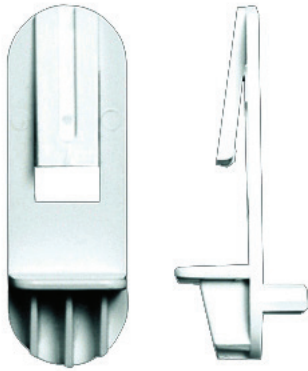
**Handed Locking Shelf Support, 5mm Bore Supports 3/4" Thick Shelf**



- Dowel Length: .240"
- Offset: .125"
- Shelf clearance: 5mm
- Sold by thousands

Item #	Description	Finish	Sold In
TNNT802-01	Left Shelf Support	Clear	1,000
TNNT802-02	Right Shelf Support	Clear	1,000

B  
C  
D  
E  
F  
G  
H  
I  
J  
K  
L  
M  
N  
O  
P  
Q  
R  
S  
T  
U  
V  
W  
X  
Y

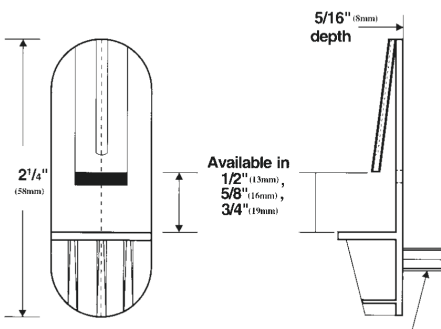


**Plastic Locking Shelf Support 5mm & 1/4" Bores**



- Plastic shelf locking support clips for 5/8" and 3/4" shelves
- Shelf rest area is 1/2" L x 3/4" W
- Sold per each

For Use With	Finish	1/4" Bore Box Qty: 1,000 Item #	5mm Bore Box Qty: 1,000 Item #
5/8" Shelves	Clear	-	RV30558CL
5/8" Shelves	White	-	RV30558WH
3/4" Shelves	Clear	-	RV30534CL
3/4" Shelves	White	RV30134WH	RV30534WH



**Locking Shelf Support, 5mm Bore Supports 3/4" or 1" Thick Shelves**



- 5mm pegs at 32mm c/c
- Dual peg locking tongue support
- Sold in unit of measure as noted below

Item #	Description	Finish	Unit of Measure
BA3220CL-62	Locking Shelf Support	Clear	Each

**PLASTIC SHELF SUPPORTS**



**Locking Shelf Support, 5mm Bore Supports 3/4" or 1" Thick Shelves**



- Made from ultra strong, clear polycarbonate
- Screw it to side panel to make it tamper proof
- Shelf can be attached to shelf support
- Passes 300 lbs. shear test (each)
- Shelf loads of over 500 lbs.
- Sold in full box quantities only

Item #	Finish	Box Qty
TNTB403	Clear	100

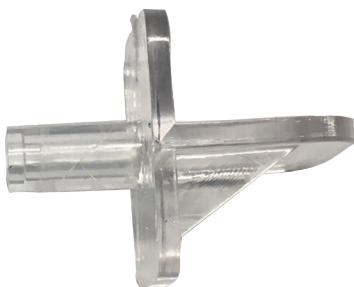


**5mm Bore Double Pins, Plastic**



- Double lock design allows shelf support to accept, support and lock in 3/4" and 1" thick shelves
- Dual 5mm diameter pins are 32mm c/c
- Shelf rest area is 1"L x 1/2"W
- ANSI/BHMA tested and certified
- Sold per each

Finish	Item #	Box Qty	Sold In
White	HC5030010-WH	100	Per Each
Clear	HC5030095-CLR	100	Per Each



**"L" Shaped Plastic Shelf Support 5mm Bore**



- Shelf rest area is 1/2"L x 9/16"W
- 5mm bore, non-fluted 3/8" long stem
- Sold in full box quantity

Color	Item #	Sold In
Clear	HGH802CL1000	1,000

**A PLASTIC SHELF SUPPORTS**

B  
C  
D  
E  
F  
G  
H  
I  
J  
K  
L  
M  
N  
O  
P  
Q  
R  
S  
T  
U  
V  
W  
X  
Y



**“L” Shaped Plastic Shelf Support  
1/4” Bore, Heavy Duty**



- “L” shaped supports have 1/2” long and 1/2” wide shelf rest area
- Pin length is 5/16” and is fluted
- Sold in full box quantity

Finish	Item #	Box Qty
Almond	HGH627A1000	1,000
Dark Brown	HGH627WAL1000	1,000
White	HGH627WH1000	1,000



**Nylon Shelf Pins & Shelf Hold-Down, 5mm Bore**



- Fits 5mm diameter hole in 32mm system
- May be used in pin holes one above and one below shelf
- Locks shelf into place for transport
- Made of White Nylon

Item #	Sold In
SYP5638W	Per Each



**Shelf Supports, Translucent Plastic**



- 5mm diameter bore
- For shelf thickness 16mm and 19mm
- Holds shelf firmly in place

Item #	Sold In
HET1005082	Per Each



**Wire Shelf Support  
1/8” Bore**



- Makes shelves adjustable and removable, yet strong and firm
- Drill a series of 1/8” diameter holes x 1/2” deep in the side wall, horizontally separated according to the wire selected and the shelf depth

Length	Item #	Sold In
6-1/4”	SYMW6	Per Each
7-3/4”	SYMW7	Per Each
9-3/4”	SYMW9	Per Each
13-3/4”	SYMW13	Per Each

**GLASS SHELF SUPPORTS**



**Non-Skid Glass Shelf Support, 5mm Bore**



- Nickel-plated steel shelf support with anti-skid rubber treads to keep glass in place
- Shank is 5mm diameter by 9mm long permitting entry into a 3/4" sidewall from both sides
- Shelf rest area extends 3/8" and has three rubber donuts to protect glass from scratching

Item #	Finish	Sold In
SYX1391N	Nickel Plated	Per Each

A  
B  
C  
D  
E  
F  
G  
H  
I  
J  
K  
L  
M  
N  
O  
P  
Q  
R  
S  
T  
U  
V  
W  
X  
Y



**Non-Skid Glass Shelf Support, 5mm Bore**



- Support flat-type shelf rest with 7/16" dia. nylon suction cup for sliding glass
- Pin is 5mm dia. x 9mm L permitting entry from both sides of a 3/4" sidewall
- Projection is 11/16"

Item #	Finish	Sold In
SYX138N	Nickel Plated	Per Each



**Clamping Glass Shelf Support, 5mm Bore**



- Metal support that locks glass firmly into place via a rubber tipped nylon screw
- Accommodates glass shelf thickness of 3/16" to 1/4"
- Can also be used as a pivot hinge with 3/8" diameter plastic bushing
- 5mm bore pin is 5/16" long
- Support holding shelf is 3/4" square

Item #	Finish	Sold In
SY301521CH	Chrome	Per Each

**A HANGING RAIL SYSTEMS**



A

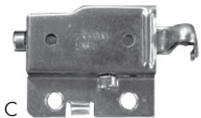
**180 Lb Rated Hanging Rail System**



- Steel Hanging Rail with oval holes
- Brackets are rated at 180 lbs. per pair
- Brackets Left/Right adjustment is 11mm, Up/Down adjustment is 14mm



B



C



D



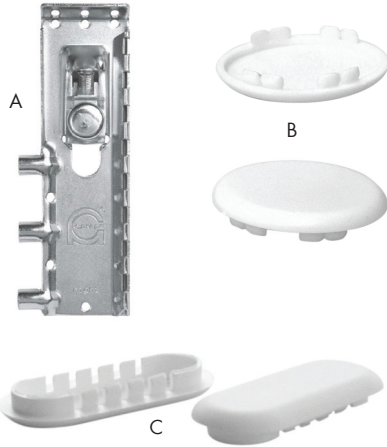
E

	Item #	Description
A	HA290.11.901	Steel Hanging Rail with oval holes, 1"W x 97"L
B	PT883-01-24	Cover for 1" Steel Hanging Rail, White
	PT883-55-24	Cover for 1" Steel Hanging Rail, Almond
	PT883-04-24	Cover for 1" Steel Hanging Rail, Brown
C	PT16-85450	Hanging Rail Bracket, Left Sided, Zinc plated
D	PT16-85451	Hanging Rail Bracket, Right Sided, Zinc plated
E	PT16-85252-680	Cover Cap for Hanging Rail Bracket, Left Sided, White
	PT16-85253-680	Cover Cap for Hanging Rail Bracket, Right Sided, White

Visit us on our website: [wurthlac.com](http://wurthlac.com)

The screenshot shows the Wurth website homepage with a navigation bar, search bar, and several promotional banners. The main banner features 'Wurth Louis and Company Introduces: RGB TUNABLE FLEXTAPE' with a description: 'Creating dramatic lighting with 16 million color combinations is now a reality with RGB Standard color-changing FlexTape®'. Other banners include 'NOW HIRING!' with 'Apply at: wurthlac.com/careers' and 'SUPPLY CHAIN CHALLENGES? We have you COVERED. LEARN MORE'.

**ROUND CLOSET TUBING**



**Concealed Metal Hanging Bracket & Cover Cap**



- Primary use for kitchen cabinets
  - Mounts behind back panel
  - 286 lbs. weight capacity per pair
  - Adjustment: 10mm Left to Right / 12mm Up and Down
- Sold In: Both broken and full box quantities.

	Item #	Description
A	PT816-DU-DX	Concealed Bracket, Right Side Mount
	PT816-DU-SX	Concealed Bracket, Left Side Mount
<b>Cover Caps</b>		
B	PT810-35-01	40mm Round Cover Cap, White Finish, for 816 Bracket
C	PT810-00-01	40mm x 20mm Oval Cover Cap, White Finish, for 816 Bracket

A  
B  
C  
D  
E  
F  
G  
H  
I  
J  
K  
L  
M  
N  
O  
P  
Q  
R  
S  
T  
U  
V  
W  
X  
Y



**1-1/16" Diameter Round Chrome Tubing**



- Wall thickness of .075"
- Chrome Look finish

Item #	Length
KV750-1-72	6 ft.
KV750-1-96	8 ft.
KV750-1-120	10 ft.
KV750-1-144	12 ft.



**1-1/16" Diameter Round Tubing Heavy Duty, Stainless Steel**



- .087" (2.2mm) wall thickness
- Stainless steel skin over steel

Item #	Length
KV660-72	6 ft.
KV660-96	8 ft.
KV660-120	10 ft.
KV660-144	12 ft.



**1-1/16" Diameter Round Tubing Extra Heavy Duty, Thick Wall Tubing**



- Chrome Look finish
- Extra thick wall thickness of .106"

Item #	Length
KV770-1-72	6 ft.
KV770-1-96	8 ft.

**A ROUND CLOSET TUBING & FLANGES**

B  
C  
D  
E  
F  
G  
H  
I  
J  
K  
L  
M  
N  
O  
P  
Q  
R  
S  
T  
U  
V  
W  
X  
Y

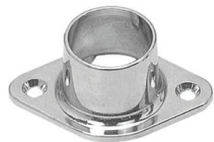


**1-1/16" Diameter Round Chrome Tubing, Value Priced Steel**



- High quality steel with a wall thickness of .080"
- Material is 14 gauge steel with Polished Chrome finish

Item #	Length
YYTUBE-1-48	4 ft.
YYTUBE-1-60	5 ft.
YYTUBE-1-72	6 ft.
YYTUBE-1-96	8 ft.
YYTUBE-1-120	10 ft.
YYTUBE-1-144	12 ft.



Closed



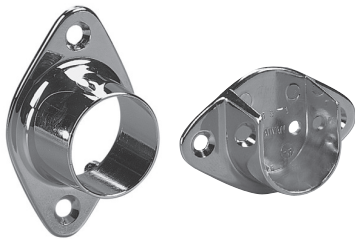
Open

**1-1/16" Diameter Chrome Flanges Value Priced Round Open & Closed Style**



- Flange is made of steel
- Three screw hole design (sold without screws)

Item #	Flange Type	Finish
YYFLANGE-1O-CH	Open	Polished Chrome
YYFLANGE-1C-CH	Closed	



**1-1/16" Dia. Flange, Round Open & Closed Style**



- For 1-1/16" OD tubing
- Made of steel
- Screw holes 2" on center, screws included

Item #	Flange Type	Finish
KV734	Closed	Chrome-look
KV735	Open	



**1-1/16" Dia. Chrome Flange, Open w/Pins**



- For 1-1/16" OD tubing
- 2 pins 32mm on center for 5mm bore holes
- 1 hole for screw mount, screws included

Item #	Finish
KV632CH	Chrome Look



**ROUND CLOSET TUBING**



**1-5/16" Diameter Round Chrome Tubing**

- Wall thickness: .075"
- Available in four lengths
- Made of steel, Chrome Look finish



Length	Item #
6 ft.	KV770-5-72
8 ft.	KV770-5-96

Length	Item #
10 ft.	KV770-5-120
12 ft.	KV770-5-144



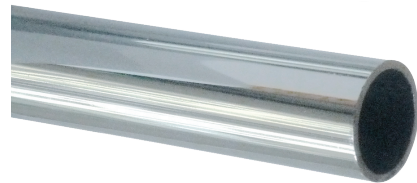
**1-5/16" Diameter Round Chrome Tubing Heavy Duty, Thick Wall**

- Extra wall thickness of 1.06"
- Available in four lengths
- Steel construction



Length	Item #
6 ft.	KV750-5-72
8 ft.	KV750-5-96

Length	Item #
10 ft.	KV750-5-120
12 ft.	KV750-5-144



**1-5/16" Diameter Round Tubing, Value Priced**

- Wall thickness .078"



Item #	Length	Finish	Material
YYTUBE-5-48	4 ft.	Polished Chrome	Steel
YYTUBE-5-60	5 ft.	Polished Chrome	Steel
YYTUBE-5-72	6 ft.	Polished Chrome	Steel
YYTUBE-5-96	8 ft.	Polished Chrome	Steel
YYTUBE-5-120	10 ft.	Polished Chrome	Steel
YYTUBE-5-144	12 ft.	Polished Chrome	Steel
YYTUBE-5-96DB	8 ft.	Dull Brass	Aluminum
YYTUBE-5-96DC	8 ft.	Dull Chrome	Aluminum
YYTUBE-5-8DN	8 ft.	Dull Nickel	Aluminum
YYTUBE-5-8BLK	8 ft.	Matte Black	Aluminum
YYTUBE-5-8ORB	8 ft.	Oil Rubbed Bronze	Aluminum



**Center Support for 1-5/16" Diameter Closet Rod**

- Made of steel
- Screw mount
- Screws Included



Item #	For Closet Rod Size	C/C	Finish
YYCTR-5CH	1-5/16" Dia.	34mm	Chrome

A  
B  
C  
D  
E  
F  
G  
H  
I  
J  
K  
L  
M  
N  
O  
P  
Q  
R  
S  
T  
U  
V  
W  
X  
Y

**A ROUND CLOSET FLANGES**



**1-5/16" Diameter Flanges, Open & Closed**



- Flanges are made of a zinc alloy
- Holds a 1-5/16" dia. outside dimension tube
- Flanges have three screw holes (screws not included)

Open Item #	Finish	Type
YYFLANGE-5O-SN	Satin Nickel	Open
YYFLANGE-5O-DC	Dull Chrome	Open
YYFLANGE-5OCS-DB	Dull Brass	Open
YYFLANGE-5O-BLK	Matte Black	Open
YYFLANGE-5O-ORB	Oil Rubbed Bronze	Open
YYFLANGE-5O-CH	Polished Chrome	Open

Closed Item #	Finish	Type
YYFLANGE-5C-SN	Satin Nickel	Closed
YYFLANGE-5CS-DB	Dull Brass	Closed
YYFLANGE-5C-BLK	Matte Black	Closed
YYFLANGE-5C-ORB	Oil Rubbed Bronze	Closed
YYFLANGE-5C-CH	Polished Chrome	Closed



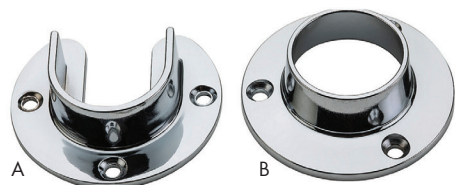
**1-5/16" Diameter Flanges Round Open & Closed With Pins**



- Flanges are made of a zinc alloy
- Holds a 1-5/16" diameter outside dimension tube
- Flange has two pins, 32mm on center for 5mm bore holes and center screw hole, screws not included

Open Item #	Finish	Type
YYFLANGE-5OP-SN	Satin Nickel	Open
YYFLANGE-5OP-DC	Dull Chrome	Open
YYFLANGE-5OP-DB	Dull Brass	Open
YYFLANGE-5OP-ORB	Oil Rubbed Bronze	Open
YYFLANGE-5OP-CH	Polished Chrome	Open

Closed Item #	Finish	Type
YYFLANGE-5CP-SN	Satin Nickel	Closed
YYFLANGE-5CP-DC	Dull Chrome	Closed
YYFLANGE-5CP-DB	Dull Brass	Closed
YYFLANGE-5CP-ORB	Oil Rubbed Bronze	Closed
YYFLANGE-5CP-CH	Polished Chrome	Closed



**1-5/16" Dia. Chrome Flanges, Open & Closed**



KNAPE & VOGT

- For 1-5/16" tubing
- Chrome look finish
- Includes screws



	Item #	Type	Holes
A	KV766	Open	2-Holes on 2-1/4" centers, on at 90°
B	KV764	Closed	3-Holes spaced 1-1/8" from center



**Closet Tubing, Round End Caps**



KNAPE & VOGT

- Anochrome finish

Item #	Description
KV730	Fits KV# 660 Tubing
KV731ANO	Fits tubing with 1-1/16" OD
KV732	Fits tubing with 1-5/16" OD

**OVAL CLOSET TUBING**



**Oval Chrome Tubing, 30mm x 15mm Steel**



- Tubing is made of steel with a Polished Chrome finish
- .039" wall thickness
- Available in 8' and 12' lengths

Item #	Length
FUTOV8-CH	8 ft. Closet Rod
FUTOV12-CH	12 ft. Closet Rod

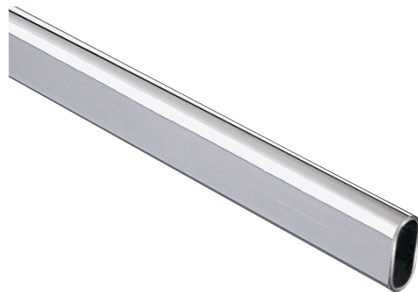


**Oval Tubing, 30mm x 15mm Aluminum, Varied Finishes**



- Tubing is made of 100% aluminum
- .039" wall thickness
- Available in 8' lengths only

Item #	Finish
FUTOV8-DB	Dull Brass
FUTOV8-DCH	Dull Chrome
FUTOV8-DN	Dull Nickel
FUTOV8-MB	Matte Black
FUTOV8-ORB	Oil Rubbed Bronze



**Oval Chrome Tubing, 30mm x 15mm Heavy Duty, Steel**



- Wall Thickness .047"
- Constructed of steel with a heavy gauge welded seam
- Chrome Look finish

Item #	Length
KV880-96CH	8 ft.
KV880-144CH	12 ft.



**Center Support for Oval Tubing**



- Size: 9/16" x 1-3/16"
- (2) holes for mounting screws, 1-3/16" C/C
- Includes #6 x 3/4" screws

Item #	Finish
FUTOVC-CH	Chrome
FUTOVC-DB	Dull Brass
FUTOVC-DN	Dull Nickel
FUTOVC-ORB	Oil Rubbed Bronze

A  
B  
C  
D  
E  
F  
G  
H  
I  
J  
K  
L  
M  
N  
O  
P  
Q  
R  
S  
T  
U  
V  
W  
X  
Y

**A OVAL CLOSET FLANGES**



**Oval Flange, 30mm x 15mm  
Open Style, 3 Hole/No Pins**



- Flanges are made of a zinc alloy
- Flanges have 3 screw holes with no pins

Item #	Finish
FUTOVS-DN	Dull Nickel
FUTOVS-DC	Dull Chrome
FUTOVS-DB	Dull Brass
FUTOVS-MB	Matte Black
FUTOVS-ORB	Oil Rubbed Bronze
FUTOVS-CH	Polished Chrome



**Oval Flange, 30mm x 15mm  
Open Style With Dual Pins**



- Flanges are made of a zinc alloy
- Flanges have two 5mm pins for use in 32mm systems and a single screw hole

Item #	Finish
FUTOVP-DN	Dull Nickel
FUTOVP-DC	Dull Chrome
FUTOVP-DB	Dull Brass
FUTOVP-MB	Matte Black
FUTOVP-ORB	Oil Rubbed Bronze
FUTOVP-CH	Polished Chrome



**Oval Chrome Flanges, 30mm x 15mm  
Open Style With Dual Pins**



- For use with KV880 Series or other 30mm x 15mm oval tubing
- Designed with 1 hole for extra mounting strength; two 5mm pins for use in 32mm systems
- Chrome Look finish

Item #	Finish
KV881CHR	Chrome

**CLOSET TUBING FLANGES & CENTER SUPPORTS**



**1-3/8" Diameter Round Plastic Flanges  
Open & Closed Pair Set, No Pins**

- 1-3/8" White plastic flange



Item #	Sold In
BA1323-WH	Per Pair



**Closet Rod Center Support  
Hanger for 2" Diameter Rods**

- Use for additional center support on closet rods up to 2" diameter
- Anochrome finish, screws included



Item #	Sold In
KV29201ANO	12/Box



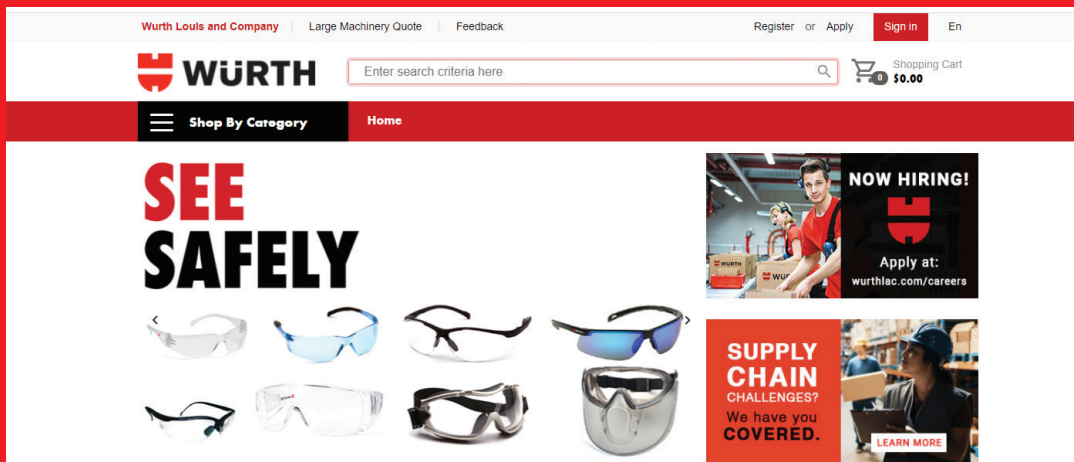
**Closet Rod Center Support**

- Flange at top of rod is designed to accept 1-1/16" outside diameter tubing
- Support is 24" long but can be cut shorter
- Use for ceiling or under shelf support and added center support for long rods
- Anochrome finish, screws included



Item #	Sold In
KV760	Per Each

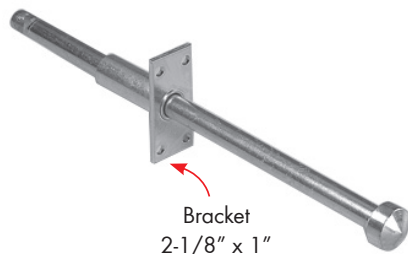
**Visit us on our website: [wurthlac.com](http://wurthlac.com)**



A  
B  
C  
D  
E  
F  
G  
H  
I  
J  
K  
L  
M  
N  
O  
P  
Q  
R  
S  
T  
U  
V  
W  
X  
Y

**A CLOSET EXTENSION HANGERS**

B  
C  
D  
E  
F  
G  
H  
I  
J  
K  
L  
M  
N  
O  
P  
Q  
R  
S  
T  
U  
V  
W  
X  
Y



Bracket  
2-1/8" x 1"

**Inset Mount Rod**

- .43" diameter rod
- Anochrome finish, screws included
- Extends 5/8" to 8-1/4", overall length is 10-5/16"
- Total clearance needed is 9.695"



Item #	Bore Length	Sold In
KV753	2-1/16"	Per Each



**Expandable Closet Tubing**

- Expandable Steel round tubing, no need to cut
- Top tabs sit on shelf cleat for easy alignment
- Screws included



Length Range	White Item #	Sold In	Zinc Item #	Sold In
18" - 30"	KV2WH18	Per Each	KV2-18	Per Each
30" - 48"	KV2WH30	Per Each	KV2-30	10/Box
48" - 72"	KV2WH48	Per Each	-	-
60" - 96"	-		KV2ZC60	Per Each
96" - 144"	-		KV2ZC96	Per Each



**Extension Hanger, Ball Bearing Movement**

- Ball bearing movement
- Extension hanger designed to mount perpendicularly underneath closet shelving
- Increases accessibility and closet capacity
- Garments are more accessible
- Anochrome finish



Item #	Fits Shelf Size	Length of Extension	Sold In
KV110	10" Only	10"	Per Each
KV112	12" - 16" Wide	12"	Per Each
KV116	16" - 20" Wide	16"	Per Each
KV120	20" - 24" Wide	20"	12/Box

**VALET RODS**

A  
B  
C  
D  
E  
F  
G  
H  
I  
J  
K  
L  
M  
N  
O  
P  
Q  
R  
S  
T  
U  
V  
W  
X  
Y



**Valet Rods, Standard Outside Mount**



- 12" depth standard valet rod mounts via 32mm hole pattern
- Rod extends 6"
- Requires only 4 screws to install, included
- Features a removable pull for easy customization

Item #	Finish
RVCVL-12CH	Chrome
RVCVL-12ORB	Oil Rubbed Bronze
RVCVL-12SN	Satin Nickel



**Valet Rods, Decorative Outside Mount Rod**



- Designed for 12" or 14" depth closet panels, mounts within 32mm hole patterns
- 12" depth rod extends 6-27/32" fully opened and 14" depth rod extends 8" fully opened
- Features a removable pull for changing out hardware
- Requires only 2 Euro screws to install (included)
- Adjustable mounting brackets included

12" Depth Item #	14" Depth Item#	Finish
RVCVR-12CH	RVCVR-14CH	Chrome
RVCVR-12ORB	RVCVR-14ORB	Oil Rubbed Bronze
RVCVR-12SN	RVCVR-14SN	Satin Nickel



**Valet Rods, Inset Mount Rod**



- Rod is 7" long, designed to fit 3/4" thick or thicker panels
- Rod extends 3-1/2" fully opened
- Removable pull hardware for easy customization

Item #	Finish
RVCVRI-7CH	Chrome
RVCVRI-7-ORB	Oil Rubbed Bronze
RVCVRI-7-SN	Satin Nickel
Optional Drill Guide	
RVCVRI-DG	

**A PULL-OUT PANTS RACKS**

B  
C  
D  
E  
F  
G  
H  
I  
J  
K  
L  
M  
N  
O  
P  
Q  
R  
S  
T  
U  
V  
W  
X  
Y



**Metal Pants Rack, Pull-Out Rack**



- Made of heavy gauge chrome with moveable fingers and full extension
- Designed for 14"W closet space
- Rack has adjustment feature
- Heavy duty full extension slides are rated at 100 lbs.

Item #	Dimensions	Finish	Capacity
RVPSC-1814CH	17-1/2" - 18-1/8"W x 3"H x 14"D	Chrome	9 Pairs of Pants
RVPSC-2414CH	23-3/4" - 24-1/2"W x 3"H x 14"D	Chrome	13 Pairs of Pants
RVPSC-3014CR	29-3/4" - 30-1/2"W x 3"H x 14"D	Chrome	16 Pairs of Pants



**Metal Pants Rack, Fan Style**



- Chrome plated fan rack has a distinctive fan feature with fingers
- Fan pant rack is made for 18" wide and 16" depth closet opening
- Can be mounted either right or left handed
- Rubber o-rings keep pants from slipping, polished ends prevent snags

Item #	Dimensions	Finish
RVCPRF-16CH	16-1/8"W x 16-1/8"D	Chrome
RVCPRF-16ORB	16-1/8"W x 16-1/8"D	Oil Rubbed Bronze



**Pull-Out Wood Pant Rack**



- Available in 24" and 30" widths
- Space for up to 18 standard pants
- 100 lbs. full-extension slides, rubber grommets to prevent slipping and removable rods
- 30" wide pants rack has space for tie storage
- Made from solid Birch/Maple

Item #	Dimensions
RVCWPR-2414	24" W x 14-3/8"D x 6" H
RVCWPR-3014	30" W x 14-3/8" D x 6" H



**PULL-OUT TIE/BELT RACKS**

A  
B  
C  
D  
E  
F  
G  
H  
I  
J  
K  
L  
M  
N  
O  
P  
Q  
R  
S  
T  
U  
V  
W  
X  
Y



**Tie Rack With Top Tray**



- Holds up to 20 ties, 5 belts and 4 peg closure belts
- Top tray for accessories
- Designed to mount to closet side panels and extends via ball bearing slide

Item #	Dimensions	Finish
RVTBC-14TCH	6"W x 14"D x 5"H	Chrome

**Steel Side Mount Tie/Belt Rack**



- Made of Steel w/full extension ball bearing slides
- Available in 12"D & 14"D

Sold In: Both broken full box quantities.



Steel Belt Rack



Steel Tie Rack

Item #	Size	Finish	Belt/Tie Capacity
<b>Steel Pull-Out Belt Rack</b>			
RVBRC-12CR	2-1/2"W x 12"D x 1-7/8"H	Chrome	7 Belt Hooks
RVBRC-12ORB	2-1/2"W x 12"D x 1-7/8"H	Oil Rubbed Bronze	7 Belt Hooks
RVBRC-12SN	2-1/2"W x 12"D x 1-7/8"H	Satin Nickel	7 Belt Hooks
RVBRC-14CH	2-1/2"W x 14"D x 1-7/8"H	Chrome	9 Belt Hooks
RVBRC-14ORB	2-1/2"W x 14"D x 1-7/8"H	Oil Rubbed Bronze	9 Belt Hooks
RVBRC-14SN	2-1/2"W x 14"D x 1-7/8"H	Satin Nickel	9 Belt Hooks
<b>Steel Pull-Out Tie Rack</b>			
RVTRC-12CR	2-1/2"W x 12"D x 1-7/8"H	Chrome	23 Ties
RVTRC-14CH	2-1/2"W x 14"D x 1-7/8"H	Chrome	25 Ties
RVTRC-14ORB	2-1/2"W x 14"D x 1-7/8"H	Oil Rubbed Bronze	25 Ties
RVTRC-14SN	2-1/2"W x 14"D x 1-7/8"H	Satin Nickel	25 Ties

**A PULL-OUT WOOD TIE RACKS**

B  
C  
D  
E  
F  
G  
H  
I  
J  
K  
L  
M  
N  
O  
P  
Q  
R  
S  
T  
U  
V  
W  
X  
Y



**Wood Pull-Out Tie Rack**



- Wood pull-out rack can hold over 120 ties
- Features 100 lb. full extension slides and rubber o-rings to prevent slipping
- Made from solid birch/maple

Item #	Dimensions
RVCWTR-2414	24"W x 14-3/8"D x 6"H



**Wood Tie Butler, Top Mount**



- Made of Maple with ball bearing slides and fits in min of 7" opening

Item #	Finish	Depth	Tie Capacity
RVCWTR-14	Natural	14"	44
RVCWTR-14B	Black	14"	44
RVCWTR-16	Natural	16"	52
RVCWTR-20	Natural	20"	68



**Wood Tie Racks, Side Mount**



- Made of Maple with full extension ball bearing slides

Item #	Finish	Depth	Tie Capacity
RVCWSTR-14B-1	Black	14"	22
RVCWSTR-14W	White	14"	22
RVCWSTR-20	Natural	20"	34

**BELT & TIE RACKS**

A  
B  
C  
D  
E  
F  
G  
H  
I  
J  
K  
L  
M  
N  
O  
P  
Q  
R  
S  
T  
U  
V  
W  
X  
Y



**Side Mount Wood Belt Rack**



- Designed for 3" wide spaces
- Full-extension slides
- Removable Pegs
- Carb II compliant

Item #	Description	Finish
RVCWSBR-14-1	2-3/4"W x 13-7/8"D x 2-7/8"H, Capacity = 17 Belts	Natural
RVCWSBR-20-1	2-3/4"W x 19-7/8"D x 2-7/8"H, Capacity = 23 Belts	Natural



**Top Mount Wood Belt Butler**



- Holds up to 26 Belts
- Durable wood construction
- Full-extension slides
- Removable Pegs
- Carb II compliant

Item #	Description	Finish
RVCWTBR-14B-1	4-1/2"W x 13-7/8"D x 3-3/8"H, Capacity = 26 Belts	Black



A



B

**Static Racks**



- Available in Chrome, Oil Rubbed Bronze and Satin Nickel
- Easy installation

	Item #	Description	Size	Capacity	Finish
<b>Static Belt Rack</b>					
A	RVBRC-12NS-CR	Static Belt Rack	1-7/8"W x 11-3/4"D x 1-3/4"H	7 Belts	Chrome
	RVBRC-12NS-ORB	Static Belt Rack	1-7/8"W x 11-3/4"D x 1-3/4"H	7 Belts	Oil Rubbed Bronze
	RVBRC-12NS-SN	Static Belt Rack	1-7/8"W x 11-3/4"D x 1-3/4"H	7 Belts	Satin Nickel
<b>Static Tie Rack</b>					
B	RVTRC-12NS-CR	Static Tie Rack	1-7/8"W x 11-3/4"D x 1-3/4"H	23 Ties	Chrome
	RVTRC-12NS-ORB	Static Tie Rack	1-7/8"W x 11-3/4"D x 1-3/4"H	23 Ties	Oil Rubbed Bronze
	RVTRC-12NS-SN	Static Tie Rack	1-7/8"W x 11-3/4"D x 1-3/4"H	23 Ties	Satin Nickel

**A SPIRAL CLOTHES RACK & PULL DOWN CLOSET ROD**

B  
C  
D  
E  
F  
G  
H  
I  
J  
K  
L  
M  
N  
O  
P  
Q  
R  
S  
T  
U  
V  
W  
X  
Y



**Spiral Clothes Rack**



- 360-degree turning radius
- Adjustable Height: 72-1/2" to 84"
- Can hang (40) single items of clothing
- Comes complete with a stabilizer bar, post and pivot hardware and mounting hardware

NOTE: The size of your hangers and clothing stored on this unit will dictate the minimum size of the cabinet.

Item #	Description	Size	Capacity	Finish
RVSHR-84	360° Spiral Rack	23"W x 72-1/2" - 84"H	40 single items of clothing	Chrome



**Pull Down Closet Rod, 25 lbs. Load Capacity**



- The telescoping pull rod's length is adjustable from 34" - 50" to accommodate universal design and handicap accessible applications
- Soft-closing mechanism that will slowly draw the bar back to the upright position
- Includes: (1) Pull-Down Closet assembly, rod, mechanism, arms, handle, connectors and hardware

Item #	Dimensions	Description	Finish
RVCPDR-1826	21-1/2" - 26"W x 4"D x 34-3/4" - 49-3/4"H	Pull Down Closet Rod	Chrome/ Black
RVCPDR-2635	26" - 35"W x 4"D x 34-3/4" - 49-3/4"H	Pull Down Closet Rod	Chrome/ Black
RVCPDR-3548	35" - 48"W x 4"D x 34-3/4" - 49-3/4"H	Pull Down Closet Rod	Chrome/ Black
RVCPDR-2635ORB	26" - 35"W x 4"D x 34-3/4" - 49-3/4"H	Pull Down Closet Rod	Oil-Rubbed Bronze/ Black



**Tallman Pull Down Closet Rod**



- The double-type model is designed for installation on side walls of a cabinet or closet, using it in full width
- Adjusting the length of the rod is easily done in just one step
- Load capacity: up to 33 lbs. (evenly distributed)

Item #	Dimensions	Finish
SGTAW1200-GY	31.50"W x 8.27"D x 29.60"H	Gray
SGTAW1200-U	31.50"W x 8.27"D x 29.60"H	Umber

**PULL-OUT CLOSET BASKETS**



**Premium Heavy Duty Pull-Out Wire Baskets**



- Heavy duty slides (100 lb. rated) ball bearing type with bayonet mounting system configured to 32mm system
- Baskets are designed to be easily removable and effortlessly re-installed
- Baskets rest on top of ball bearing slides
- Oil Rubbed Bronze baskets come with black slides for a consistent appearance
- Closet Basket Liners are sold separately on the next page

Size	Chrome Item #	Oil Rubbed Bronze Item #	Satin Nickel Item #
18"W x 12"D x 7"H	RVCB-181207CR	-	-
18"W x 12"D x 11"H	RVCB-181211CR	-	-
18"W x 12"D x 18"H	RVCB-181218CR	-	-
18"W x 14"D x 7"H	RVCB-181407CH	RVCB-181407ORB	RVCB-181407SN
18"W x 14"D x 11"H	RVCB-181411CH	RVCB-181411ORB	RVCB-181411SN
18"W x 14"D x 18"H	RVCB-181418CH	RVCB-181418ORB	RVCB-181418SN
18"W x 16"D x 7"H	RVCB-181607CH	RVCB-181607ORB	RVCB-181607SN
18"W x 16"D x 11"H	RVCB-181611CH	RVCB-181611ORB	RVCB-181611SN
18"W x 16"D x 18"H	RVCB-181618CH	RVCB-181618ORB	RVCB-181618SN
18"W x 20"D x 7"H	RVCB-182007CR	RVCB-182007ORB	RVCB-182007SN
18"W x 20"D x 11"H	RVCB-182011CH	RVCB-182011ORB	RVCB-182011SN
18"W x 20"D x 18"H	RVCB-182018CH	RVCB-182018ORB	RVCB-182018SN
24"W x 12"D x 7"H	RVCB-241207CR	-	-
24"W x 12"D x 11"H	RVCB-241211CR	-	-
24"W x 12"D x 18"H	RVCB-241218CR	-	-
24"W x 14"D x 7"H	RVCB-241407CH	RVCB-241407ORB	RVCB-241407SN
24"W x 14"D x 11"H	RVCB-241411CH	RVCB-241411ORB	RVCB-241411SN
24"W x 14"D x 18"H	RVCB-241418CH	RVCB-241418ORB	RVCB-241418SN
24"W x 16"D x 7"H	RVCB-241607CH	RVCB-241607ORB	RVCB-241607SN
24"W x 16"D x 11"H	RVCB-241611CH	RVCB-241611ORB	RVCB-241611SN
24"W x 16"D x 18"H	RVCB-241618CH	RVCB-241618ORB	RVCB-241618SN
24"W x 20"D x 7"H	RVCB-242007CR	RVCB-242007ORB	RVCB-242007SN
24"W x 20"D x 11"H	RVCB-242011CH	RVCB-242011ORB	RVCB-242011SN
24"W x 20"D x 18"H	RVCB-242018CH	RVCB-242018ORB	RVCB-242018SN
30"W x 12"D x 7"H	RVCB-301207CR	-	-
30"W x 12"D x 11"H	RVCB-301211CR	-	-
30"W x 12"D x 18"H	RVCB-301218CR	-	-
30"W x 14"D x 7"H	RVCB-301407CH	RVCB-301407ORB	RVCB-301407SN
30"W x 14"D x 11"H	RVCB-301411CH	RVCB-301411ORB	RVCB-301411SN
30"W x 14"D x 18"H	RVCB-301418CH	RVCB-301418ORB	RVCB-301418SN
30"W x 16"D x 7"H	RVCB-301607CH	RVCB-301607ORB	RVCB-301607SN
30"W x 16"D x 11"H	RVCB-301611CH	RVCB-301611ORB	RVCB-301611SN
30"W x 16"D x 18"H	RVCB-301618CH	RVCB-301618ORB	RVCB-301618SN

A  
B  
C  
D  
E  
F  
G  
H  
I  
J  
K  
L  
M  
N  
O  
P  
Q  
R  
S  
T  
U  
V  
W  
X  
Y

**A PULL-OUT CLOSET BASKET LINERS**

**Pull-Out Basket Liners**

- Designed for Rev-A-Shelf's Premium Heavy Duty Pull-Out Wire Baskets (RVCB Series)
- Three types of liners: Black, Tan, and Plastic
- Black and Tan Liners attach securely with hook and loop fasteners
- Black and Tan Liners are machine washable



Black Liner



Tan Liner



Plastic Liner

NOTE: \*Sold in 3/Box

Size	Black Liner Item #	Tan Liner Item #	Plastic Liner Item #
18"W x 12"D x 7"H	RVCBL-181207-B-1	RVCBL-181207-T-1	
18"W x 12"D x 11"H	RVCBL-181211-B-1	RVCBL-181211-T-1	
18"W x 12"D x 18"H	RVCBL-181218-B-1	RVCBL-181218-T-1	
18"W x 14"D x 7"H	RVCBL-181407-B-3	RVCBL-181407-T-3*	RVCBM-181407-P-1
18"W x 14"D x 11"H	RVCBL-181411-B-3	RVCBL-181411-T-3*	RVCBM-181411-P-1
18"W x 14"D x 18"H	RVCBL-181418-B-1	RVCBL-181418-T-3	RVCBM-181418-P-1
18"W x 16"D x 7"H	RVCBL-181607-B-1	RVCBL-181607-T-1	RVCBM-181607-P-1
18"W x 16"D x 11"H	RVCBL-181611-B-1	RVCBL-181611-T-1	RVCBM-181611-P-1
18"W x 16"D x 18"H	RVCBL-181618-B-1	RVCBL-181618-T-3*	RVCBM-181618-P-1
18"W x 20"D x 7"H	RVCBL-182007-B-1	RVCBL-182007-T-1	
18"W x 20"D x 11"H	RVCBL-182011-B-1	RVCBL-182011-T-1	
18"W x 20"D x 18"H	RVCBL-182018-B-1	RVCBL-182018-T-1	
24"W x 12"D x 7"H	RVCBL-241207-B-1	RVCBL-241207-T-1	
24"W x 12"D x 11"H	RVCBL-241211-B-1	RVCBL-241211-T-1	
24"W x 12"D x 18"H	RVCBL-241218-B-1	RVCBL-241218-T-1	
24"W x 14"D x 7"H	RVCBL-241407-B-3	RVCBL-241407-T-3*	RVCBM-241407-P-1
24"W x 14"D x 11"H	RVCBL-241411-B-3	RVCBL-241411-T-3	RVCBM-241411-P-1
24"W x 14"D x 18"H	RVCBL-241418-B-1	RVCBL-241418-T-3	RVCBM-241418-P-1
24"W x 16"D x 7"H	RVCBL-241607-B-1	RVCBL-241607-T-1	RVCBM-241607-P-1
24"W x 16"D x 11"H	RVCBL-241611-B-1	RVCBL-241611-T-1	RVCBM-241611-P-1
24"W x 16"D x 18"H	RVCBL-241618-B-1	RVCBL-241618-T-1	RVCBM-241618-P-1
24"W x 20"D x 7"H	RVCBL-242007-B-1	RVCBL-242007-T-1	
24"W x 20"D x 11"H	RVCBL-242011-B-1	RVCBL-242011-T-1	
24"W x 20"D x 18"H	RVCBL-242018-B-1	RVCBL-242018-T-1	
30"W x 12"D x 7"H	RVCBL-301207-B-1	RVCBL-301207-T-1	
30"W x 12"D x 11"H	RVCBL-301211-B-1	RVCBL-301211-T-1	
30"W x 12"D x 18"H	RVCBL-301218-B-1	RVCBL-301218-T-1	
30"W x 14"D x 7"H	RVCBL-301407-B-1	RVCBL-301407-T-1	RVCBM-301407-P-1
30"W x 14"D x 11"H	RVCBL-301411-B-1	RVCBL-301411-T-1	RVCBM-301411-P-1
30"W x 14"D x 18"H	RVCBL-301418-B-1	RVCBL-301418-T-1	RVCBM-301418-P-1
30"W x 16"D x 7"H	RVCBL-301607-B-1	RVCBL-301607-T-1	RVCBM-301607-P-1
30"W x 16"D x 11"H	RVCBL-301611-B-1	RVCBL-301611-T-1	RVCBM-301611-P-1
30"W x 16"D x 18"H	RVCBL-301618-B-1	RVCBL-301618-T-1	RVCBM-301618-P-1

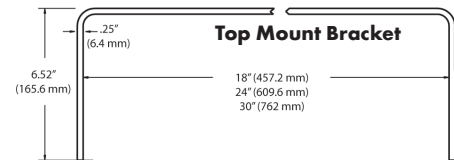
**BASKET ACCESSORIES**

**Wire Basket Bracket For Rev-A-Shelf Baskets**



- Top mount bracket allows you to utilize the Rev-A-Shelf wire baskets in non-standard openings of 18", 24", or 30" W
  - Bracket mounts to the underside of cabinet shelf, minimum cabinet opening of 1/2" greater than basket size is required for use
  - Bracket is available in Chrome finish only
- Packing & Sold In: Sets of two brackets only.

Item #	Description
RVCTMB-18	For 18" wide baskets
RVCTMB-24	For 24" wide baskets



**Cloth Liner For Rev-A-Shelf Wire Baskets**



- Black liner made of durable, machine washable canvas
- Liners feature velcro tie handles
- Provides a comfortable and secure gripping surface
- Liners available for 24" and 30" wide baskets only

NOTE: \*Sold In 3/Box

Item #	Basket Dimensions	Coordinating RVCB Series Basket
RVCHBI-241418-3	24"W x 14"D x 18"H	RVCB-241418CR & RVCB-241418SN
RVCHBI-241618-3	24"W x 16"D x 18"H	RVCB-241618CR & RVCB-241618SN
RVCHBI-242018-3	24"W x 20"D x 18"H	RVCB-242018CR & RVCB-242018SN
RVCHBI-301418-3*	30"W x 14"D x 18"H	RVCB-301418CR & RVCB-301418SN
RVCHBI-301618-3	30"W x 16"D x 18"H	RVCB-301618CR & RVCB-301618SN

A  
B  
C  
D  
E  
F  
G  
H  
I  
J  
K  
L  
M  
N  
O  
P  
Q  
R  
S  
T  
U  
V  
W  
X  
Y

A  
B  
C  
D  
E  
F  
G  
H  
I  
J  
K  
L  
M  
N  
O  
P  
Q  
R  
S  
T  
U  
V  
W  
X  
Y

## TILT-OUT HAMPERS



### Tilt-Out Wire Hamper Basket



- Basket door mounts to a bottom hinged cabinet for easy one step "Slide-In/Slide-Out" basket removal (hinges not included)
- Wire hamper baskets are 19-1/2" H x 13-1/4" D
- Each hamper is constructed with heavy duty 6mm wire
- Provides the ability to conceal and access laundry in one motion
- Includes: Wire tilt-out hamper, hamper attachment brackets and instructions

Item #	Dimensions	Load Capacity	Finish
RVCTOHB-161319CH	15-1/2"W x 13-1/2"D x 19-3/4"H	55 Quarts	Chrome
RVCTOHB-161319-ORB	15-1/2"W x 13-1/2"D x 19-3/4"H	55 Quarts	Oil Rubbed Bronze
RVCTOHB-161319SN	15-1/2"W x 13-1/2"D x 19-3/4"H	55 Quarts	Satin Nickel
RVCTOHB-211319CH	20-1/2"W x 13-1/2"D x 19-3/4"H	74 Quarts	Chrome
RVCTOHB-211319-ORB	20-1/2"W x 13-1/2"D x 19-3/4"H	74 Quarts	Oil Rubbed Bronze
RVCTOHB-211319SN	20-1/2"W x 13-1/2"D x 19-3/4"H	74 Quarts	Satin Nickel



### Removable Hamper Basket Bags, 15-1/2" & 20-1/2" Wide



- Designed for RVCTOHB Series Tilt-Out Hampers
- Made of machine washable canvas
- Designed to fit tight and securely with hook and loop fasteners
- Strong handles for easy transport and removal
- 1.7 Bushels (55 qt.) for the 15-1/2"W unit (#RVCTOHB-161319 Series)
- 2.3 Bushels (74 qt.) for the 20-1/2"W unit (#RVCTOHB-211319 Series)

Item #	For Basket Size	For Item # Series	Color
RVCTOHB-16	15-1/2"W	RVCTOHB-161319	Black
RVCTOHT-16	15-1/2"W	RVCTOHB-161319	Tan
RVCTOHB-21	20-1/2"W	RVCTOHB-211319	Black
RVCTOHT-21	20-1/2"W	RVCTOHB-211319	Tan



**PULL-OUT HAMPER BASKETS**

A  
B  
C  
D  
E  
F  
G  
H  
I  
J  
K  
L  
M  
N  
O  
P  
Q  
R  
S  
T  
U  
V  
W  
X  
Y



**Premium Hamper Basket Pull-Out w/Soft-Close**

- Rev-A-Shelf CH Series
- Features bottom mount full-extension slides with Rev-A-Motion Soft-Open/Soft Close System
- Plastic carriage is available in silver or white
- Includes: (2) wire hamper baskets, (2) ivory canvas bags, door mount brackets, and installation screws
- Designed for a 24" wide opening
- Replacement canvas bag is sold separately, see below

Item #	Dimensions	Load Capacity	Finish/Color
RVCH-241419-RM-211	24"W x 13-15/16"D x 18-7/8"H	80 Quarts	White/Ivory
RVCH-241419-RM-217	24"W x 13-15/16"D x 18-7/8"H	80 Quarts	Silver/Ivory
RV5CHB-LINER	Canvas Hamper Bag, Ivory		



**Chrome Wire Hamper Basket Pull-Out w/Cloth Bag**

- Rev-A-Shelf HRV Series
- Features full-extension slides
- Includes: (1) chrome wire basket, (1) cloth bag, and installation screws
- Replacement cloth bag and door mount kit are sold separately, see below

Item #	Dimensions	Finish
RVHRV-1520S-CR	14-3/4"W x 18"D x 19-3/8"H	Chrome
<b>Accessories</b>		
RVHRV-1520-LINER	Replacement Ivory Cloth Bag	
RVDM17-KIT	Silver Door Mount Kit For HRV Series Hampers	



**White Wire Hamper Basket Pull-Out**

- Rev-A-Shelf HRV Series
- Features full-extension slides
- Includes: (1) white wire basket and installation screws
- Optional cloth bag (only for #RVHRV-1520SWH) and door mount kit are sold separately, see below

Item #	Dimensions	Finish
RVHRV-1215SWH	11-7/8"W x 18"D x 14-3/4"H	White
RVHRV-1220SWH	11-7/8"W x 18"D x 19-3/8"H	White
RVHRV-1515SWH	14-3/4"W x 18"D x 14-3/4"H	White
RVHRV-1520SWH	14-3/4"W x 18"D x 19-3/8"H	White
<b>Accessories</b>		
RVHRV-1520-LINER	Optional Ivory Cloth Bag (only fits #RSHRV1520S)	
RVDMKITWH	White Door Mount Kit For HRV Series Hampers	

**A PULL-OUT HAMPER BASKETS**

B  
C  
D  
E  
F  
G  
H  
I  
J  
K  
L  
M  
N  
O  
P  
Q  
R  
S  
T  
U  
V  
W  
X  
Y



**Pull-Out Plastic Hamper Basket**



- Hamper pulls out smoothly on White epoxy coated, full extension, ball bearing slides
- Installs with 4 screws to the base of the cabinet (included)
- Basket is White

Item #	Dimensions	Load Capacity
RVHPRV-1520SWH	14-1/4"W x 20"D x 19-3/8"H	56 Qts.
RVDMKITWH	Door Mount Kit	



**Pull-Out Plastic Tall Hamper With Lid, White**



- Features (1) tall hamper basket with 108 qt capacity and removable lid
- Full extension heavy duty ball bearing slides with 14" depth
- Easy installation with (4) screws attached to the base of the cabinet (included)
- Hamper is available with or without a door mount kit

Item #	Dimensions	Load Capacity
<b>Door Mount Hamper with Lid</b>		
RVHPRV-1925DMS	19-7/8"W x 14"D x 24 "H	64 Quarts
<b>Pull-Out Hamper with Lid</b>		
RVHPRV-1925S	19-7/8"W x 14"D x 24 "H	64 Quarts



**Pull-Out Hamper, Plastic Low Profile**



- Rolls out easily on full extension, ball bearing slides
- Frost, plastic basket has built in handles and lifts out of wire frame
- Includes: (1) polymer hamper/utility basket with frame, full extension slides and (4) screws
- Installs with 4 screws to the base of the cabinet
- Can be door mounted via optional door mount kit below

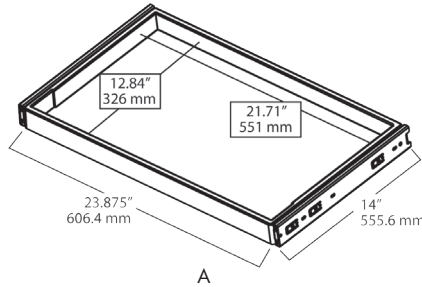
Item #	Dimensions	Load Capacity
RVHURV-1512SWH	14-3/8"W x 18-1/8"D x 11-7/8"H	32 Quarts
RVDMKITWH	Door Mount Kit	

## JEWELRY ORGANIZERS

### Jewelry Drawer Organizer

- One piece pre-assembled drawer box with full extension slides for 14" deep closets
- Two drawer box insert designs give the ability to store larger items like necklaces without tangling and the curved inside radius allows for full accessibility to small items such as earring backs
- Features full-extension ball bearing slides, and drawer front mounting capability using drawer mount brackets (described below)

NOTE: \*Sold In 5/Box



B



C

Item #	Description	Dimensions	Finish	
A	RVCJD-2414	Drawer Box w/Slides	24"W x 14"D x 1-7/8"H	Black
B	RVCJD-24IN	Jewelry Insert	22"W x 13"D x 1-1/2"H	Velvet
C	RVCJD-24IS	Necklace Insert	22"W x 13"D x 1-1/2"H	Velvet
<b>Brackets</b>				
RVCJD-DMBKIT*	Drawer Front Mount Brackets			

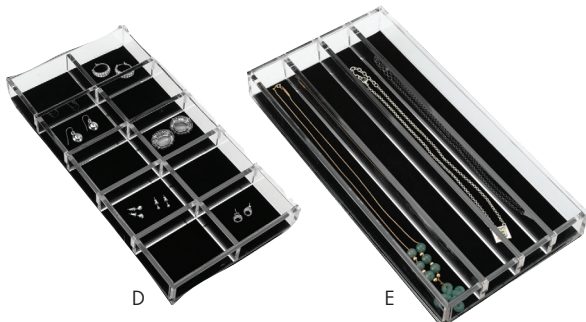


A



B

C



D

E

### Undermount Jewelry Drawer

- Soft-close undermount slides
- Wood construction
- Velvet bottom
- Easy installation, drawer front mountable
- Drawer accessories sold separately, see below

Item #	Dimensions	Description
<b>Soft-Close Jewelry Drawers</b>		
A	RVCVJD-1814UM	18"W x 14"D
	RVCVJD-2414UM	24"W x 14"D
	RVCVJD-3014UM	30"W x 14"D
<b>Undermount Jewelry Drawer Accessories</b>		
B	RVCV-RING	11-5/8"W x 4-1/4"D x 1-1/4"H
C	RVCA-SMORG	11-5/8"W x 4-1/4"D x 1-1/4"H
D	RVCA-LGORG	11-5/8"W x 6"D x 1-1/4"H
E	RVCA-NECKLACE	11-5/8"W x 6"D x 1-1/4"H



A  
B  
C  
D  
E  
F  
G  
H  
I  
J  
K  
L  
M  
N  
O  
P  
Q  
R  
S  
T  
U  
V  
W  
X  
Y

**A SHELF DIVIDERS & WIRE SHOE RAIL**

B  
C  
D  
E  
F  
G  
H  
I  
J  
K  
L  
M  
N  
O  
P  
Q  
R  
S  
T  
U  
V  
W  
X  
Y

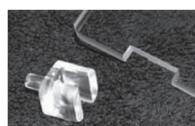


**Acrylic Shelf Organizer, Shelf Dividers**



- Designed for 14" depth closet panels as the organizers are 13-1/2" deep
- Two heights of organizers available; 6-9/16" and 14-1/8" organizers are 1/4" thick
- Organizers are provided with clear acrylic clips, clips are fastened to shelving via 5mm pins

Item #	Dimensions	Sold In
RVCSPD-6	13-1/2"D x 6-9/16"H x 1/4" Thick	10 dividers/40 clips
RVCSPD-14	13-1/2"D x 14-1/8"H x 1/4" Thick	10 dividers/40 clips



Clips are inserted into notches cut into the acrylic to hold dividers secure while inserting or removing shoes, boots or purses



**Wire Shoe Rail**



- Shoe rail is easy to install and features heavy gauge chrome railing
- Designed to fit 5mm bore mounting holes on 32mm spacing

Dimensions	Chrome Item #	Sold In	Oil Rubbed Bronze Item #	Sold In	Satin Nickel Item #	Sold In
17"L x 2.25"H	RVCSR-17CH	Per Each	RVCSR-17ORB	Per Each	RVCSR-17SN	Per Each
23"L x 2.25"H	RVCSR-23CH	Per Each	RVCSR-23ORB	Per Each	RVCSR-23SN	Per Each
29"L x 2.25"H	RVCSR-29CH	Per Each	RVCSR-29ORB	Per Each	RVCSR-29SN	Per Each
35"L x 2.25"H	RVCSR-35CH	Per Each	RVCSR-35ORB	10/Box	RVCSR-35SN	Per Each

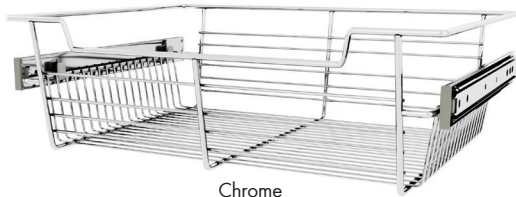
**SIDELINES CLOSET ACCESSORIES**



Bronze

**Pull-Out Wire Baskets**

- Designed for 14" depth closet cabinets
- Available in (3) heights 5", 10" or 17" and (3) widths 18", 24" or 30"
- Installs easily in 32 mm applications
- Easy to remove baskets rest securely on hooks
- Full-extension, ball-bearing slides (included)
- Available in chrome, bronze and satin nickel
- Basket canvas and plastic liners (sold separately)



Chrome



Satin Nickel

Item #	Description	Size
RVCBSL-181405BZ	Pull-Out Wire Basket, Bronze	18"W x 14"D x 5"H
RVCBSL-181405CR	Pull-Out Wire Basket, Chrome	18"W x 14"D x 5"H
RVCBSL-181405SN	Pull-Out Wire Basket, Satin Nickel	18"W x 14"D x 5"H
RVCBSL-181410BZ	Pull-Out Wire Basket, Bronze	18"W x 14"D x 10"H
RVCBSL-181410CR	Pull-Out Wire Basket, Chrome	18"W x 14"D x 10"H
RVCBSL-181410SN	Pull-Out Wire Basket, Satin Nickel	18"W x 14"D x 10"H
RVCBSL-181417BZ	Pull-Out Wire Basket, Bronze	18"W x 14"D x 17"H
RVCBSL-181417CR	Pull-Out Wire Basket, Chrome	18"W x 14"D x 17"H
RVCBSL-181417SN	Pull-Out Wire Basket, Satin Nickel	18"W x 14"D x 17"H
RVCBSL-241405BZ	Pull-Out Wire Basket, Bronze	24"W x 14"D x 5"H
RVCBSL-241405CR	Pull-Out Wire Basket, Chrome	24"W x 14"D x 5"H
RVCBSL-241405SN	Pull-Out Wire Basket, Satin Nickel	24"W x 14"D x 5"H
RVCBSL-241410BZ	Pull-Out Wire Basket, Bronze	24"W x 14"D x 10"H
RVCBSL-241410CR	Pull-Out Wire Basket, Chrome	24"W x 14"D x 10"H
RVCBSL-241410SN	Pull-Out Wire Basket, Satin Nickel	24"W x 14"D x 10"H
RVCBSL-241417BZ	Pull-Out Wire Basket, Bronze	24"W x 14"D x 17"H
RVCBSL-241417CR	Pull-Out Wire Basket, Chrome	24"W x 14"D x 17"H
RVCBSL-241417SN	Pull-Out Wire Basket, Satin Nickel	24"W x 14"D x 17"H
RVCBSL-301405BZ	Pull-Out Wire Basket, Bronze	30"W x 14"D x 5"H
RVCBSL-301405CR	Pull-Out Wire Basket, Chrome	30"W x 14"D x 5"H
RVCBSL-301405SN	Pull-Out Wire Basket, Satin Nickel	30"W x 14"D x 5"H
RVCBSL-301410BZ	Pull-Out Wire Basket, Bronze	30"W x 14"D x 10"H
RVCBSL-301410CR	Pull-Out Wire Basket, Chrome	30"W x 14"D x 10"H
RVCBSL-301410SN	Pull-Out Wire Basket, Satin Nickel	30"W x 14"D x 10"H
RVCBSL-301417BZ	Pull-Out Wire Basket, Bronze	30"W x 14"D x 17"H
RVCBSL-301417CR	Pull-Out Wire Basket, Chrome	30"W x 14"D x 17"H
RVCBSL-301417SN	Pull-Out Wire Basket, Satin Nickel	30"W x 14"D x 17"H

A  
B  
C  
D  
E  
F  
G  
H  
I  
J  
K  
L  
M  
N  
O  
P  
Q  
R  
S  
T  
U  
V  
W  
X  
Y

**A SIDELINES CLOSET ACCESSORIES**



Mirror Pull-Out

3-Way Mirror Pull-Out

**Closet Mirrors**

- 3-Way foldable mirror has (3) panels that open up to 26"W and is 48"H
- Pulls out smoothly and swivels 90°
- Allow 5.75" for swiveling clearance
- Soft-close retracting mechanism, requires only a gentle push
- Fits any partition at least 14"D and 8"W
- Can be installed behind cabinet doors
- Universal, non-handed



Item #	Dimensions	Description	Finish
RVCMSL-1448-SM	2"W x 13-3/4"D x 47-1/4"H	48" Closet Mirror w/Over-Travel & Soft-Close	Silver Mist
RVCMSL-1424-SM	2"W x 13-3/4"D x 23-5/8"H	24" Closet Mirror w/Over-Travel & Soft-Close	Silver Mist
RVCMSL-1448-BZ	2"W x 13-3/4"D x 47-1/4"H	48" Closet Mirror w/Over-Travel & Soft-Close	Bronze
RVCMTWSL-1448-SM	3-3/16"W x 13-7/8"D x 47-1/4"H	48" 3-Way Closet Mirror w/Over-Travel & Soft-Close	Silver Mist



A. Tilt-Out Chrome Wire Hamper

**Tilt-Out Chrome Wire Hamper Basket & Black Cloth Hamper**

- Available in black 18", 24" and 30" cloth hamper or chrome 18" and 24"
- Unique, slanted rim design for clearance with tilt-down hamper cabinet doors
- Heavy gauge 2.8 mm and 5.8 mm steel wire construction
- Flap stay and door mounting bracket hardware included
- Door hinges (sold separately)



B. Tilt-Out Black Cloth Hamper

	Item #	Description	Size
A	RVCTOHBSL161419CR1	Tilt-Out Hamper Basket, Chrome	16"W x 14"D
	RVCTOHBSL211419CR1	Tilt-Out Hamper Basket, Chrome	21"W x 14"D
	RVCTOHL16	Tan Cloth Basket Liner for RVCTOHBSL161419CR1 Tilt-Out Hamper	16"W x 14"D
	RVCTOHL21	Tan Cloth Basket Liner for RVCTOHBSL211419CR1 Tilt Out Hamper	21"W x 14"D
B	RVCTOHS18	Black Cloth Closet Tilt Out Hamper	18"W x 14"D
	RVCTOHS24	Black Cloth Closet Tilt Out Hamper	24"W x 14"D
	RVCTOHS30	Black Cloth Closet Tilt Out Hamper	30"W x 14"D

Tilt-Out Hampers Include:  
Flap Stay and Door Mount Bracket (Hinges not included)

**SIDELINES CLOSET ACCESSORIES**

A  
B  
C  
D  
E  
F  
G  
H  
I  
J  
K  
L  
M  
N  
O  
P  
Q  
R  
S  
T  
U  
V  
W  
X  
Y



**Black Hamper Pull-Out**

- (3) models to fit 18", 24" and 30" section widths, all 14"+ deep
- Available in Black
- Full-extension, 75 lb. rated, ball-bearing steel slides
- 1.7 BU removable canvas bag w/ handles
- 18" and 24" = (1) canvas bag
- 30" = (2) canvas bags
- Mounts to cabinet sides
- Installs easily in 32 mm applications



Item #	Dimensions	Description	Minimum Cab. Opening
RVCSOHS1-18-1	18"W x 14"D x 20-7/8"H	1.7 BU Hamper	18"
RVCSOHS1-24-1	24"W x 14"D x 20-7/8"H	1.7 BU Hamper	24"
RVCSOHS1-30-1	30"W x 14"D x 20-7/8"H	(2) 1.7 BU Hampers	30"



**Iron Holder**

- Easy installation
- Heavy-duty wire construction
- Cord management
- Mounts to cabinet or wall



Item #	Dimensions	Description
RVIRH-SM-1	5-23/32"W x 5-1/8"D x 10-1/4"H	Iron Holder, Silver Mist Finish



**Premier Satin Chrome Pull Down Closet Rod**

- Cut-to-size fits cabinet openings from 18" to 48"
- Hanging area of 16.9" to 46.9"
- Satin chrome
- Swivel handle
- Soft-open/soft-close assist
- 33 lb. capacity
- Mounts to cabinet sides
- Sidelines by Rev-A-Shelf® exclusive design



Item #	Dimensions	Description	Finish
RVCPDRSL-48SC	18" - 48"W x 12-13/32"D x 35-7/16"H	Premier Pull Down Closet Rod	Satin Chrome

**A SIDELINES CLOSET ACCESSORIES**



**Elite Rotating Ironing Board**

- Board: 38" L x 13" W
- Mounts on shelf
- Rotates 360 degrees when out of cabinet
- Locks into place
- Soft-Close Over-Travel Slides
- 18-1/2" W when stored
- Fits any partition at least 14" deep
- Spacer kit for drawer mounting included
- Replacement cover (sold separately)



Pull-Out



Swivel



Open



Swivel 360°



Perfect for installation behind a drawer front using the included spacers

Item #	Dimensions	Description	Finish
RVCROIBSL-14-SM	18-11/16"W x 14"D x 4-17/32"H	Elite Rotating Ironing Board w/Over-Travel	Silver Mist
RVCROIBSL-COVER	12-3/16"W x 37-13/16"D x 7/8"H	Cover for Elite Rotating Ironing Board	Tan



**SIDELINES CLOSET ACCESSORIES**

A  
B  
C  
D  
E  
F  
G  
H  
I  
J  
K  
L  
M  
N  
O  
P  
Q  
R  
S  
T  
U  
V  
W  
X  
Y



**Premier Pop-Up Ironing board**

- Fits any partition at least 14"D and 8"W
- 6"W when stored, including hardware
- Reversible mounting
- Over-travel Slides
- Soft-Open Assist
- Metal Legs lock for stability
- Adjustable feet
- Board: 43"L x 13"W
- US Patent No. 7,310,889 B1
- Replacement cover (sold separately)



Pull-Out



Pull-Up

Item #	Dimensions	Description	Finish
RVCPUIBSL-14-SM	6-5/16"W x 13-15/32"D x 43-5/16"H	Premier Pop-Up Ironing Board	Silver Mist
RVCPUIBSL-COVER-52	13-13/32"W x 43-11/16"D x 7/8"H	Cover for Premier Pop-Up Ironing Board	Tan

**A SIDELINES CLOSET ACCESSORIES**

B  
C  
D  
E  
F  
G  
H  
I  
J  
K  
L  
M  
N  
O  
P  
Q  
R  
S  
T  
U  
V  
W  
X  
Y



**Deluxe Swivel Ironing Board**

- Board: 38" L x 13" W
- 5" wide when stored, including hardware
- Fits any partition at least 14" D and 8" W
- Overall height when stored: 72"
- Adjustable feet for stability
- Replacement cover (sold separately)



Pull-Out



Swivel



Pull-Down

Item #	Dimensions	Description	Finish
RVCSWIBSL14-SM	5-1/4"W x 13"D x 53-5/32"H	Deluxe Swivel Ironing Board	Silver Mist
RVCSWIBSL-COVER	13-13/32"W x 37-13/32"D x 7/8"H	Cover for Deluxe Swivel Ironing Board	Tan

**SIDELINES CLOSET ACCESSORIES**

A  
B  
C  
D  
E  
F  
G  
H  
I  
J  
K  
L  
M  
N  
O  
P  
Q  
R  
S  
T  
U  
V  
W  
X  
Y



**Pop-Out Belt Rack**

- One-touch pop-out mechanism
- Fits panel depths of 14" or greater
- Cast aluminum slide housing
- Reversible (Left or Right mount)



Item #	Description	Dimensions	Finish	Capacity
RVBRCPOS-14-BZ	Deluxe Pop-Out Belt Rack	14" Depth	Bronze	7 Belts
RVBRCPOS-14-CR	Deluxe Pop-Out Belt Rack	14" Depth	Chrome	7 Belts
RVBRCPOS-14-SN	Deluxe Pop-Out Belt Rack	14" Depth	Satin Nickel	7 Belts



**Wall Mount Belt Rack**

- Fits panel depths of 14" or greater
- Reversible (Left or Right mount)
- Easy installation with (2) screws



Item #	Description	Dimensions	Finish	Capacity
RVBRCSL-14NS-CR	Wall Mount Belt Rack	14" Depth	Chrome	7 Belts



**Pull-Out Belt Rack**

- Full-extension, ball-bearing, steel slide with steel rack housing
- Fits panel depths of 14" or greater
- 10 mm diameter rod extends 8"
- Reversible (Left or Right mount)



Item #	Description	Dimensions	Finish	Capacity
RVCBRSL-14-BZ	Deluxe Pull-Out Belt Rack	14" Depth	Bronze	7 Belts
RVCBRSL-14-CR	Deluxe Pull-Out Belt Rack	14" Depth	Chrome	7 Belts
RVCBRSL-14-SC	Deluxe Pull-Out Belt Rack	14" Depth	Satin Chrome	7 Belts
RVCBRSL-14-SN	Deluxe Pull-Out Belt Rack	14" Depth	Satin Nickel	7 Belts

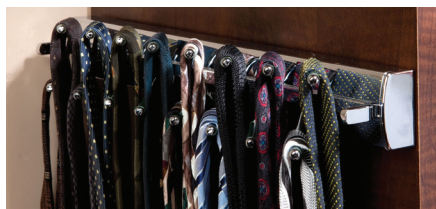


**Swivel-Out Belt Rack**

- Over-extension, ball-bearing, steel slide with pivoting roller hinge
- Fits panel depths of 14" or greater
- Locks in place after pivoting
- Cast aluminum slide housing
- Reversible (Left or Right mount)



Item #	Description	Dimensions	Finish	Capacity
RVCSWBRSL-14-BZ	Premier Swivel Belt Rack	14" Depth	Bronze	7 Belts
RVCSWBRSL-14-CR	Premier Swivel Belt Rack	14" Depth	Chrome	7 Belts
RVCSWBRSL-14-SC	Premier Swivel Belt Rack	14" Depth	Satin Chrome	7 Belts
RVCSWBRSL-14-SN	Premier Swivel Belt Rack	14" Depth	Satin Nickel	7 Belts

**A SIDELINES CLOSET ACCESSORIES**

**Pop-Out Tie Rack**

- One-touch pop-out mechanism
- Fits panel depths of 14" or greater
- Cast aluminum slide housing
- Non-slip soft PVC coated pegs
- Reversible (Left or Right mount)



Item #	Description	Dimensions	Finish	Capacity
RVTRCPOS1-14-BZ	Deluxe Pop-Out Tie Rack	14" Depth	Bronze	16 Ties
RVTRCPOS1-14-CR	Deluxe Pop-Out Tie Rack	14" Depth	Chrome	16 Ties
RVTRCPOS1-14-SN	Deluxe Pop-Out Tie Rack	14" Depth	Satin Nickel	16 Ties


**Wall Mount Tie Rack**

- Fits panel depths of 14" or greater
- Reversible (Left or Right mount)
- Easy installation with (2) screws



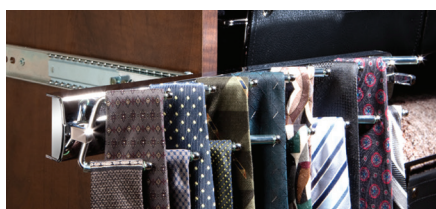
Item #	Description	Dimensions	Finish	Capacity
RVTRCSL-14NS-CR	Wall Mount Tie Rack	14" Depth	Chrome	16 Ties


**Pull-Out Tie Rack**

- Full-extension, ball-bearing, steel slide with steel rack housing
- Fits panel depths of 14" or greater
- 10 mm diameter rod extends 8"
- Reversible (Left or Right mount)



Item #	Description	Dimensions	Finish	Capacity
RVCTRSL-14-BZ	Deluxe Pull-Out Tie Rack	14" Depth	Bronze	16 Ties
RVCTRSL-14-CR	Deluxe Pull-Out Tie Rack	14" Depth	Chrome	16 Ties
RVCTRSL-14-SC	Deluxe Pull-Out Tie Rack	14" Depth	Satin Chrome	16 Ties
RVCTRSL-14-SN	Deluxe Pull-Out Tie Rack	14" Depth	Satin Nickel	16 Ties


**Swivel-Out Tie Rack**

- Over-extension, ball-bearing, steel slide with pivoting roller hinge
- Fits panel depths of 14" or greater
- Locks in place after pivoting
- Cast aluminum slide housing
- Reversible (Left or Right mount)



Item #	Description	Dimensions	Finish	Capacity
RVCSWTRSL-14-BZ	Premier Swivel Tie Rack	14" Depth	Bronze	16 Ties
RVCSWTRSL-14-CR	Premier Swivel Tie Rack	14" Depth	Chrome	16 Ties
RVCSWTRSL-14-SC	Premier Swivel Tie Rack	14" Depth	Satin Chrome	16 Ties
RVCSWTRSL-14-SN	Premier Swivel Tie Rack	14" Depth	Satin Nickel	16 Ties

**SIDELINES CLOSET ACCESSORIES**



**Pop-Out Valet Rods**

- One-touch pop-out mechanism
- Fits panel depths of 14" or greater
- Cast aluminum slide housing
- 10 mm diameter rod extends 7.5"
- Reversible (Left or Right mount)



Item #	Description	Dimensions	Finish	Capacity
RVCVLPOS-12-CR	Deluxe Pop-Out Valet Rod	12" Depth	Chrome	35 Lbs.
RVCVLPOS-14-BZ	Deluxe Pop-Out Valet Rod	14" Depth	Bronze	35 Lbs.
RVCVLPOS-14-CR	Deluxe Pop-Out Valet Rod	14" Depth	Chrome	35 Lbs.
RVCVLPOS-14-SC	Deluxe Pop-Out Valet Rod	14" Depth	Satin Chrome	35 Lbs.
RVCVLPOS-14-SN	Deluxe Pop-Out Valet Rod	14" Depth	Satin Nickel	35 Lbs.



**Pull-Out Valet Rods**

- Full-extension, ball-bearing, steel slide with steel rack housing
- Fits panel depths of 14" or greater
- 10 mm diameter rod extends 8"
- Reversible (Left or Right mount)



Item #	Description	Dimensions	Finish	Capacity
RVCVRSL-14-BZ	Deluxe Pull-Out Valet Rod	14" Depth	Bronze	45 Lbs.
RVCVRSL-14-CR	Deluxe Pull-Out Valet Rod	14" Depth	Chrome	45 Lbs.
RVCVRSL-14-SC	Deluxe Pull-Out Valet Rod	14" Depth	Satin Chrome	45 Lbs.
RVCVRSL-14-SN	Deluxe Pull-Out Valet Rod	14" Depth	Satin Nickel	45 Lbs.



**Telescopic Valet Rods**

- Cast aluminum rack housing
- Fits panel depths of 14" or greater
- 10 mm diameter rod extends 9.5"



Item #	Description	Dimensions	Finish	Capacity
RVCVLSL-14-BZ	Telescopic Valet Rod	14" Depth	Bronze	35 Lbs.
RVCVLSL-14-CR	Telescopic Valet Rod	14" Depth	Chrome	35 Lbs.
RVCVLSL-14-SC	Telescopic Valet Rod	14" Depth	Satin Chrome	35 Lbs.
RVCVLSL-14-SN	Telescopic Valet Rod	14" Depth	Satin Nickel	35 Lbs.

A  
B  
C  
D  
E  
F  
G  
H  
I  
J  
K  
L  
M  
N  
O  
P  
Q  
R  
S  
T  
U  
V  
W  
X  
Y

**A SIDELINES CLOSET ACCESSORIES**

B  
C  
D  
E  
F  
G  
H  
I  
J  
K  
L  
M  
N  
O  
P  
Q  
R  
S  
T  
U  
V  
W  
X  
Y



**Adjustable Laundry Valet Rod**

- Steel construction
- Mounting-screws provided
- Extends out to 11"



Item #	Description	Finish	Capacity
RVCLVSL-BZ	Adjustable Laundry Valet Rod	Bronze	35 Lbs.
RVCLVSL-CR	Adjustable Laundry Valet Rod	Chrome	35 Lbs.
RVCLVSL-SN	Adjustable Laundry Valet Rod	Satin Nickel	35 Lbs.



**Slide Scarf Rack**

- Fits 14" deep or greater cabinetry
- Full-extension, ball-bearing slide
- Steel construction
- Universal left or right mount (screws provided)



Item #	Description	Finish	Capacity
RVCSFRSL-14-CR	Deluxe Slide Scarf Rack	Chrome	7 Loops



**Pull-Out Pants Racks w/Soft Close**

- Full-extension, soft-closing, ball-bearing steel slides
- Steel construction, cast aluminum slide housing
- Installs with (4) screws, a fully-assembled unit



Item #	Description	Size	Capacity
RVPSCSL1814SC-BZ	Pull-Out Pants Rack w/Soft-Close, Bronze	18"W x 14"D	8 Rods
RVPSCSL1814SC-SC	Pull-Out Pants Rack w/Soft-Close, Satin Chrome	18"W x 14"D	8 Rods
RVPSCSL1814SC-SN	Pull-Out Pants Rack w/Soft-Close, Satin Nickel	18"W x 14"D	8 Rods
RVPSCSL2414SC-BZ	Pull-Out Pants Rack w/Soft-Close, Bronze	24"W x 14"D	12 Rods
RVPSCSL2414SC-SC	Pull-Out Pants Rack w/Soft-Close, Satin Chrome	24"W x 14"D	12 Rods
RVPSCSL2414SC-SN	Pull-Out Pants Rack w/Soft-Close, Satin Nickel	24"W x 14"D	12 Rods
RVPSCSL3014SC-BZ	Pull-Out Pants Rack w/Soft-Close, Bronze	30"W x 14"D	15 Rods
RVPSCSL3014SC-SC	Pull-Out Pants Rack w/Soft-Close, Satin Chrome	30"W x 14"D	15 Rods
RVPSCSL3014SC-SN	Pull-Out Pants Rack w/Soft-Close, Satin Nickel	30"W x 14"D	15 Rods

**SIDELINES CLOSET ACCESSORIES**



Bronze



Chrome



Satin Nickel



Satin Chrome

**Wire Shoe Rails**

- Available lengths: 18", 24", 30" & 36"
- Configured for shelf slide application
- Available in bronze, chrome, satin chrome or satin nickel
- Installs easily in 32 mm applications



Item #	Description	Dimensions	Finish
RVCSRSL-18BZ	Wire Shoe Rail	18"L x 2"H	Bronze
RVCSRSL-18CR	Wire Shoe Rail	18"L x 2"H	Chrome
RVCSRSL-18SC	Wire Shoe Rail	18"L x 2"H	Satin Chrome
RVCSRSL-18SN	Wire Shoe Rail	18"L x 2"H	Satin Nickel
RVCSRSL-24BZ	Wire Shoe Rail	24"L x 2"H	Bronze
RVCSRSL-24CR	Wire Shoe Rail	24"L x 2"H	Chrome
RVCSRSL-24SC	Wire Shoe Rail	24"L x 2"H	Satin Chrome
RVCSRSL-24SN	Wire Shoe Rail	24"L x 2"H	Satin Nickel
RVCSRSL-30BZ	Wire Shoe Rail	30"L x 2"H	Bronze
RVCSRSL-30CR	Wire Shoe Rail	30"L x 2"H	Chrome
RVCSRSL-30SC	Wire Shoe Rail	30"L x 2"H	Satin Chrome
RVCSRSL-30SN	Wire Shoe Rail	30"L x 2"H	Satin Nickel
RVCSRSL-36BZ	Wire Shoe Rail	36"L x 2"H	Bronze
RVCSRSL-36CR	Wire Shoe Rail	36"L x 2"H	Chrome
RVCSRSL-36SC	Wire Shoe Rail	36"L x 2"H	Satin Chrome
RVCSRSL-36SN	Wire Shoe Rail	36"L x 2"H	Satin Nickel



A  
B  
C  
D  
E  
F  
G  
H  
I  
J  
K  
L  
M  
N  
O  
P  
Q  
R  
S  
T  
U  
V  
W  
X  
Y

A  
B  
C  
D  
E  
F  
G  
H  
I  
J  
K  
L  
M  
N  
O  
P  
Q  
R  
S  
T  
U  
V  
W  
X  
Y

**SIDELINES CLOSET ACCESSORIES**



**Closet Rods With Plastic Guard**

- Cast aluminum with integrated plastic pole guard
- Matching pole caps (sold separately)



Item #	Description	Dimensions	Finish
RVCRSL-96-BZ	Closet Rod with Plastic Guard	1-15/32"W x 1-1/2"H x 96"L	Bronze
RVCRSL-96-CR	Closet Rod with Plastic Guard	1-15/32"W x 1-1/2"H x 96"L	Chrome
RVCRSL-96-SN	Closet Rod with Plastic Guard	1-15/32"W x 1-1/2"H x 96"L	Satin Nickel



**Rod End Caps**

- Dowel mount: 32 mm closet system flange with 5 mm dowel pins for easy adjustments
- Includes (1) open and (1) closed cap providing stability and enabling you to install them before inserting a closet rod
- Accepts a 1-5/8" diameter closet rod (sold separately)



Item #	Description	Dimensions	Finish
RVCRCSL-BZ	Closet Rod Caps	11/16"W x 2"D x 2"H	Bronze
RVCRCSL-CR	Closet Rod Caps	11/16"W x 2"D x 2"H	Chrome
RVCRCSL-SN	Closet Rod Caps	11/16"W x 2"D x 2"H	Satin Nickel



**Single Hooks**

- Zinc die-cast construction
- Mounting hardware included
- Concealed mounting plate



Item #	Description	Dimensions	Finish
RVCSSL-HK-BZ	Single Hook	27/32"W x 1-5/8"D 2-13/32"H	Bronze
RVCSSL-HK-CR	Single Hook	27/32"W x 1-5/8"D 2-13/32"H	Chrome
RVCSSL-HK-SC	Single Hook	27/32"W x 1-5/8"D 2-13/32"H	Satin Chrome
RVCSSL-HK-SN	Single Hook	27/32"W x 1-5/8"D 2-13/32"H	Satin Nickel



**3-Way Hooks**

- Zinc die-cast construction
- Mounting hardware included
- Concealed mounting plate



Item #	Description	Dimensions	Finish
RVCTWSL-HK-BZ	3-Way Hook	2-3/16"W x 2-13/32"D 3-15/16"H	Bronze
RVCTWSL-HK-CR	3-Way Hook	2-3/16"W x 2-13/32"D 3-15/16"H	Chrome
RVCTWSL-HK-SC	3-Way Hook	2-3/16"W x 2-13/32"D 3-15/16"H	Satin Chrome
RVCTWSL-HK-SN	3-Way Hook	2-3/16"W x 2-13/32"D 3-15/16"H	Satin Nickel