

SECTION V - TABLE OF CONTENTS

Section V Contents:

Cordless Drills..... 2
 Routers3-5
 Jigsaws..... 6
 Dynabrade Random Orbital Sanders..... 7-10
 Dynabrade Finishing Sanders 10
 Dynabrade Gear Driven Sanders..... 11
 Dynabrade Dynafine Sanders..... 12-13
 Dynabrade Dyninger Sanders..... 14
 SurfPrep Air Sanders..... 15-17
 SurfPrep Electric Sanders..... 18
 3M Air Sanders..... 19
 Gem Electric Sanders..... 20
 Festool Sanders 21-22
 Sanding Inspection Lights 22
 Pneumatic Staplers 23
 Pneumatic Micro Pinners..... 24-25
 Pneumatic Micro Bradders/ Brad Nailers 25
 Air Tool / Line Accessories 26-28
 Joiners 29-32
 Festool Dust Extractors 33-35
 Dynabrade Dust Extractors..... 36-40



A
B
C
D
E
F
G
H
I
J
K
L
M
N
O
P
Q
R
S
T
U
V
W
X
Y



A CORDLESS DRILLS

B
C
D
E
F
G
H
I
J
K
L
M
N
O
P
Q
R
S
T
U
V
W
X
Y



Drill/Driver Kit, 18V



- Delivers 480 inch-lbs. of torque for improved productivity
- Weighs only 2.75 lbs. (Tool only, not including battery) and has only a 7.8" head-length
- 20+1 clutch settings provide accuracy for reduced fastener damage
- Two speed settings for high-speed (700 RPM) setting and high-power (0-450 RPM) mode
- Keyless ratcheting 1/2" chuck with auto-lock enables easier bit changes

Item #	Voltage	Battery Type	Chuck Size	Batteries Included
BOGSR18V-190B22	18V	Lithium Ion	1/2"	(2) 1.5 Ah



Compact Drill/Driver & Hex Impact Driver, 18V



- 1,400 inch-lb of max. torque in a tool that just 2.4 lb in weight
- Variable-speed drill furnishes control for high-speed (0-1,700 no-load RPM) and high-power (0-450 no-load RPM)
- Robust impact driver motor delivers a max. of 3,600 BPM for professional power
- Compact drill has a short head-length of 7.5" to fit in tight spaces
- Drill/driver's keyless ratcheting 1/2" chuck supports faster bit changes
- Built-in LED light featured on both tools illuminate dark work areas
- Electronic cell and motor protection protects the tools and batteries from overheating and overload

Item #	Voltage	Battery Type	Chuck Size	Batteries Included
BOGXL18V-26B22	18V	Lithium Ion	1/2" (Drill/Driver) 1/4" (Impact)	(2) 2.0 Ah



TID 18 HPC Cordless Impact Drill



- Maximum power due to the extremely powerful, brushless EC-TEC motor with three speed levels, and T mode specifically for self tapping screws
- Kickback free hammer mechanism drives the fastener rather than spinning the drill around the screw, protecting your wrist
- Compact design enables you to work accurately and for longer periods without becoming tired, even in hard to reach areas
- Tool free 1/4" holder, integrated bit storage, optimum LED illumination of the work area, and belt clip for attachment on both side
- Includes: 2 Battery Packs and Rapid Charger, Belt Clip, Systainer SYS3 M 187

Item #	Voltage	Battery Type	Chuck Size	Batteries Included
FST576480	18V	Lithium Ion	1/2"	(2) 4.0 Ah

ROUTERS



Laminate Trim Router, 5/8 HP

PORTER CABLE.

- On/Off switch located front and center
- Micro-set collar for quick and accurate bit height adjustments
- LED light for better visibility
- Quick release base
- Fine micro-height adjustment
- Includes: Fixed base, 1/4" Collet, Collet Wrench and Straight Edge Guide

Item #	AMPS	Soft Start	Collet Capacity	RPM
PCB6430	4.5	No	1/4"	31,000



Fixed Base Router, 2-1/4 HP

PORTER CABLE.

- Full-time electronic feedback maintains motor speed
- Dual-position switch allows user to cut power while maintaining control of the router
- Spindle lock feature allows for single wrench bit changes
- Durable latch lever enables quick and simple coarse depth adjustments and motor release for transition between bases
- Rack and pinion adjustment provides fine depth settings to 1/128"
- Includes: 1/4" and 1/2" collets, collet wrench and carrying case

Item #	AMPS	Soft Start	Collet Capacity	RPM
PCB892	12.0	Yes	1/4" & 1/2"	10,000 - 23,000



Template Guides

PORTER CABLE.

- Fit standard 1-3/16" diameter center hole router sub-bases

Item #	Purpose	I.D.	O.D.	Distance Past Base
PCB42024	Lock Face Routing	21/32"	3/4"	9/16"
PCB42237	Lock Nut for All Template Guides			

A
B
C
D
E
F
G
H
I
J
K
L
M
N
O
P
Q
R
S
T
U
V
W
X
Y

A ROUTERS



Colt™ Palm Router, 1 HP



- Variable speed dial is conveniently mounted on top of the tool body
- Simple depth adjustment, just align and lower the motor and then lock the router in position with the clamping level
- Micro-fine adjustments via wheel on the back of the router's base
- Accepts standard 1/4 In. bits with max cutter diameter of 1-5/16"
- **Includes:** Fixed Base, 1/4 In. Self-Releasing Collet Chuck, Shaft Wrench and Collet Wrench

Item #	AMPS	Soft Start	Collet Capacity	RPM
BOPR20EVS	5.6	Yes	1/4"	16,000 - 35,000



Palm Router, 1-1/4 HP



- PR101 fixed base features macro- and micro-fine depth adjustment and a centerable round subbase for easy guidance
- Rugged 360° (non-split) aluminum base housing with wide-bit capacity that accepts bits up to 1-5/16 in. wide.
- Durable spindle lock allows for fast, easy bit changes
- **Includes:** Self-releasing collet chuck collet chuck wrench

Item #	AMPS	Soft Start	Collet Capacity	RPM
BOGKF125CEN	7.0	Yes	1/4"	16,000 - 35,000

Combination Plunge- and Fixed-Base Router, 2-1/4 HP



- Includes adjustable speed settings
- Constant Response circuitry stabilizes start-up torque
- Adjustable speed dial (8,000-25,000 RPM) allows user to set the optimal speed
- Microfine bit-depth adjustment
- Plunge base
- Threaded three-hole base pattern
- Dust-sealed power switch
- One-piece armature shaft
- Fixed base has threaded holes for mounting to router table positioned in common 3-hole pattern
- Rugged carrying case has compartments for all included items
- **Includes:** 1/4" and 1/2" self releasing collet chucks, 16mm Shaft Wrench, 24mm Collet Nut Wrench, Case, Fixed and Plunge Bases and Chip Shields, Height Adjustment Wrench, Screw for Table Mounting

Item #	AMPS	Soft Start	Collet Capacity	RPM
BO1617EVSPK	12.0	Yes	1/4", 3/8", 1/2", 8 mm	8,000 - 25,000

ROUTERS



MFK 700 EQ Edge Router

FESTOOL

- Powerful 720 watt (6.0 amp) motor can easily tackle most trimming, profiling and routing applications with variable speed and detachable cord
- Vertical and horizontal extra-wide bases provides ample support area for maximum control especially near edges or on narrow stock
- Micro-adjustable depth control to 1/256 inch (1/10 mm) with dual locking columns for precise routing control
- Threaded insert to accept template guides and phenolic resin baseplate to easily glide on a surface without marring the material to be routed
- Includes: 1.5 degree horizontal base unit, 5/16" diameter collet, extraction hood, in SYSTAINER SYS 2 T-LOC

Item #	AMPS	Soft Start	Collet Capacity	RPM
FST574368	6.0	Yes	1/4" - 5/16"	10,000 - 26,000



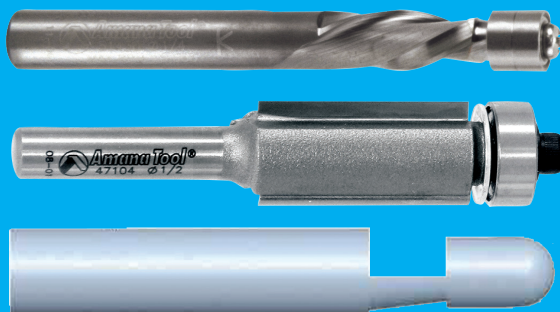
Saw Hood

FastCap®

The ChopShop Saw Hood saves you valuable time by helping keep your work area clean. Easy to set up and eliminates billowing dust throughout the shop or jobsite.

- Easy to set up and take down
- Connects to accessory holes
- Waterproof
- Great for miter saws and tile saws

Item #
FCSAWHOOD



**FOR ROUTER BITS,
See Section Y**

A
B
C
D
E
F
G
H
I
J
K
L
M
N
O
P
Q
R
S
T
U
V
W
X
Y

A JIGSAWS

B
C
D
E
F
G
H
I
J
K
L
M
N
O
P
Q
R
S
T
U
V
W
X
Y



Top Handle Jigsaw, Variable Speed



- For smooth cutting up to 5-7/8" on wood, 3/8" on steel for countertops and woodworking
- Tool-less blade-change system and fast insertion with a blade ejection lever that eliminates need to touch hot saw blade
- Four orbital-action tool settings provide different blade strokes for smooth to aggressive cuts
- Variable speed dial sets maximum speed and accelerator trigger controls operating speed
- Ambidextrous lock-on button for steadiness and user comfort
- Multidirectional blade clamp delivers superior grip of T-shank blades

Item #	Cutting Cap (Soft Wood)	SPM
BOJS470E	5-7/8"	500 - 3,100



CARVEX PSB 420 EBQ-Plus Jigsaw



- Variable speed blade speed with extremely fast max 3,800 strokes per minute
- Tool-free base and base insert platform for expanded capabilities
- Triple blade guidance for perfectly perpendicular cuts and splinterguards for tear-free cuts
- Stroboscopic high-intensity LEDs for high blade visibility
- Brushless motor technology for light weight, more power and longer service life
- Includes: Sawblade, Splinter Guard, Systainer SYS3 M 137

Item #	Style	Cutting Capacity			SPM
		Wood	Non-Ferrous Materials	Steel	
FST576192	D-Handle	4-3/4"	3/4"	3/8"	Max. 3800

For Jigsaw Blades,

See pages Y-24 through Y-27

"SWIRL-FREE" CHECKLIST FOR DYNABRADE SANDERS

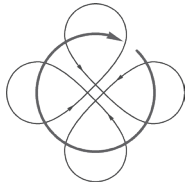
Equipment Check:



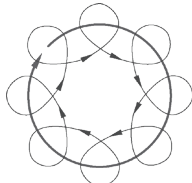
Random Orbital Sander

- 90 PSIG (6.2 Bar) is the required operating air supply pressure. Check the air pressure at the sander while it is running
- Confirm that the tool is running at the rated "Free Speed" RPM. On an average a 10,000 RPM non-vacuum sander will run at 9,500 RPM; a 12,000 RPM non-vacuum sander will run at 11,500 RPM. A vacuum sander normally runs slightly slower
- Inspect the balancer bearing (pad bearing). Remove the back-up pad and rotate the balancer bearing shaft while holding the counterbalance stationary. The balancer shaft should turn freely

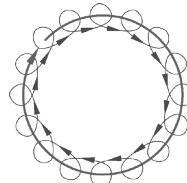
Which Orbit to Choose?



3/8" Diameter Orbit
Aggressive Sanding



3/16" Diameter Orbit
General Sanding



3/32" Diameter Orbit
Ultra-Fine Sanding

Back-Up Pad

- Inspect the face of the sanding pad. The pad must be flat and smooth, without any defects. Dynabrade sanding pads are "weight-mated" to the sander. Using another pad can make the sander vibrate excessively and lead to an unacceptable finish.

Sanding Techniques:

- Always START the sander ON the surface, and STOP the sander OFF the surface
- When sanding keep the sander, and pad FLAT on the surface. Important: Do not exert heavy downward force on the sander. Apply enough downward force to keep the back-up pad and abrasive flat on the surface allowing the back-up pad to orbit freely over the surface
- Follow a set pattern when sanding. It is suggested to pass over the surface following a "North, South, East, West" pattern (see below), overlapping each pass 1/4 the diameter of the back-up pad and abrasive. This insures that the previous scratches are removed and that a uniform finish is achieved. Two "patterns" per sanding step are recommended
- Frequently inspect abrasive for tears, folds, or build-up. When changing abrasive to proceed to the next sanding step, first inspect the condition of the abrasive that is on the sander. If any defects are noticed in that abrasive, remove it and install another piece of the same grain and sand the work surface again before proceeding on to the next sanding step
- Always clear away sanding dust and abrasive debris before progressing to the next sanding step with a finer "grit" abrasive

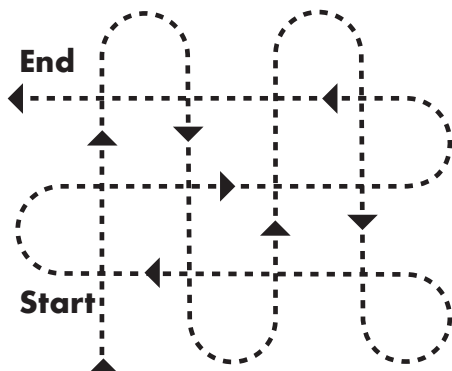


Figure A

For Dynabrade
Pads & Abrasives,
See Section Q

A DYNABRADE RANDOM ORBITAL SANDERS



Dynorbital-Spirit® , 5 & 6" Air Powered Random Orbital Sander



- Dynabrade’s lightest random orbital sander is ideal for vertical and contoured applications, and for operators with smaller hands
- Comfort Platform provides additional hand and wrist support, enhancing operator comfort. Also offers protection against cold air exhaust
- Auto-Recess Throttle Lever recesses into housing grip when depressed, eliminating pressure-point on operator’s palm
- One-handed speed control dial allows “thumb control” regulating of tool speed
- Patented Bearing Protection “V-Seal” protects balancer shaft bearing from sanding residue, resulting in longer tool life

Item #	Size	Pad Type	Orbit	RPM	HP	Vacuum Type
DB59005	5"	PSA	3/8"	12,000	.3	Non-Vacuum
DB59020			3/16"	12,000		
DB59035			3/32"	12,000		
DB59025	6"		3/16"	12,000		
DB59040			3/32"	12,000		
DB59164	5"		Multi-Hole Hook & Loop	3/16"		
DB59165		3/32"		12,000		
DB59182	6"	3/16"		12,000		
DB59183		3/32"		12,000		

Additional Specifications: Pad Thread 5/16"-24 Male | Air Inlet Thread 1/4" NPT | Hose I.D. Size 1/4". Air Pressure 90 PSIG | RPM 12,000.



Dynorbital® "Supreme", 5"



- Rotor utilizes five blades and produces more useable power; Composite rotor is stronger and has better lubricating qualities, enabling blades to last longer
- Rear exhaust

Item #	Size	Pad Type	Orbit	RPM	HP	Vacuum Type
DB56815	5"	PSA	3/16"	12,000	.28	Non-Vacuum
DB56850	5"	PSA	3/32"	12,000	.28	Non-Vacuum

DYNABRADE RANDOM ORBITAL SANDERS



Dynorbital® EXTREME, 3", 5" & 6" Random Orbital Sander Series



- EXTREME POWER: Most consistent speed under load in industry, running at 92% of rated tool speed. Rotor design enhances power with less friction
- EXTREME COMFORT: Ergonomic design with integrated comfort platform for more wrist support and overall operator comfort. Recessed throttle lever eliminates pinch and pressure points on an operator's palm
- EXTREME PERFORMANCE: Premium sanding pad is weight-mated for the lowest vibration levels

Speed Control
Dynorbital®
Extreme



3" MINI-Dynorbital®
Extreme



	Features	Benefits
1	Recessed throttle lever	Eliminates pressure point on palm
2	Integrated comfort platform	Provides enhanced ergonomic comfort
3	Comfort Grip	Tactile, ambidextrous design
4	Lip-seal shroud	Allows excellent vacuum performance
5	Weight-mated sanding pad	For reduced vibration and consistent finishes
6	Integrated Swivel Cuff	Secure, maneuverable vacuum connection
7	Increased port size	For better vacuum capture rate
8	Speed Control Lever	Allows fine adjustment of tool speed
9	Compact Housing	For confined areas & small scale sanding

Item #	Size	Pad Type	Orbit	RPM	HP	Vacuum Type
DBX31	3"	Hook & Loop	3/16"	12,000	.1	Non-Vacuum
DBX31V	3"	Hook & Loop	3/16"	12,000	.1	Central Vacuum
DBX32	3"	Hook & Loop	3/32"	12,000	.1	Non-Vacuum
DBX32V	3"	Hook & Loop	3/32"	12,000	.1	Central Vacuum
DBX51	5"	PSA	3/16"	12,000	.3	Non-Vacuum
DBX51H	5"	Hook & Loop	3/16"	12,000	.3	Non-Vacuum
DBX51V	5"	Hook & Loop	3/16"	12,000	.3	Central Vacuum
DBX51VHS	5"	Hook & Loop	3/16"	12,000	.3	Central Vacuum
DBX52	5"	PSA	3/32"	12,000	.3	Non-Vacuum
DBX52H	5"	Hook & Loop	3/32"	12,000	.3	Non-Vacuum
DBX52V	5"	Hook & Loop	3/32"	12,000	.3	Central Vacuum
DBX52VHS	5"	Hook & Loop	3/32"	12,000	.3	Central Vacuum
DBX61	6"	PSA	3/16"	12,000	.3	Non-Vacuum
DBX61H	6"	Hook & Loop	3/16"	12,000	.3	Non-Vacuum
DBX61V	6"	Hook & Loop	3/16"	12,000	.3	Central Vacuum
DBX61VHS	6"	Hook & Loop	3/16"	12,000	.3	Central Vacuum
DBX62	6"	PSA	3/32"	12,000	.3	Non-Vacuum
DBX62H	6"	Hook & Loop	3/32"	12,000	.3	Non-Vacuum
DBX62V	6"	Hook & Loop	3/32"	12,000	.3	Central Vacuum
DBX62VHS	6"	Hook & Loop	3/32"	12,000	.3	Central Vacuum

NOTE: Item #'s ending in "S" feature Speed Control Lever for fine adjustment of tool speed.

Additional Specs: Air Inlet - 1/4" NPT. Air Hose I.D. - 1/4". Air Pressure - 90 PSIG | RPM 12,000.

A
B
C
D
E
F
G
H
I
J
K
L
M
N
O
P
Q
R
S
T
U
V
W
X
Y

A
B
C
D
E
F
G
H
I
J
K
L
M
N
O
P
Q
R
S
T
U
V
W
X
Y

DYNABRADE RANDOM ORBITAL SANDERS



DBNS11V

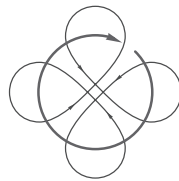


DBNS11

11" Diameter Dynorbital® Random Orbital Sander



- Cover More Area in Less Time
- Proportionate 3/4" dia. orbit in relation to pad size assures swirl-free finish on a variety of surfaces
- All models include 56231 Hook & Loop sanding pad for abrasive discs 11-1/4" in diameter. Pad is weight-mated to tool, further reducing tool vibration levels
- Tools include reversible Side Handle (55312), which adds to operator comfort
- 1 year limited warranty



3/4"
Diameter Orbit
Aggressive Sanding

Item #	Size	Pad Type	Orbit	RPM	HP	Vacuum Type
DBNS11	11"	Hook & Loop	3/4"	2,800	1	Non-Vacuum
DBNS11V		Hook & Loop	3/4"			Central Vacuum

Additional Specifications: Air Inlet Thread 1/4" NPT | Hose I.D. Size 3/8".
Air Pressure 90 PSIG.



Dynabug® II Air Powered Orbital Finishing Sander



Featheredge, Finish, Sand and Blend

- Powerful .15 hp (112 W), 10,000 RPM air motor
- Utilizes just 13 SCFM (368 L/Min) at 90 PSIG (6.2 Bar)
- Precise 3/32" orbital motion is ideal for achieving a controlled, ultra-fine finish on a variety of surfaces
- Compact size is ideal for all operators, including those with smaller hands
- Engineered and tested to ensure less tool vibration than any competitive model!
- Lighter tool weight minimizes hand and arm fatigue; perfect for vertical applications
- Rectangular shape sands deep into corners, where round pads cannot reach



Item #	Size	Pad Type	Orbit	RPM	HP	Vacuum Type
DB58510	3" x 4"	Hook & Loop	3/32"	10,000	.11	Non-Vacuum

Additional Specifications: Air Inlet Thread 1/4" NPT | Hose I.D. Size 1/4".
Air Pressure 90 PSIG.

DYNABRADE GEAR-DRIVEN SANDERS

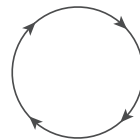


Dynalocke®

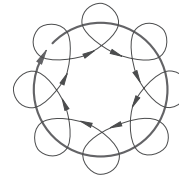
Air-Powered, Dual-Action Sander

Combination Rotary and Random Orbital Sander

- 12,000 RPM Dynalocke® is truly "two tools in one," easily changing from a rotary Disc Sander to Random Orbital Sander with the turn of a dial
- Great on composite materials, utilized for leveling then blending glue seams
- Switch is recessed within tool grip to prevent accidental engaging



ROTARY Motion
For Stripping



3/16"
Diameter Orbit
For Blending and
Swirl-Free Finishes

Item #	Size	Pad Type	Orbit	RPM	HP	Vacuum Type
DB58430	5"	Hook & Loop	3/16"	12,000	.45	Non-Vacuum
DB58435	6"		3/16"			

Additional Specifications: Pad Thread 5/16"-24 Female. Air Inlet Thread 1/4" NPT. Hose I.D. Size 1/4" Tune-up Kit: DB98220.

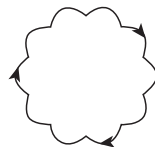


Gear-Driven Sanders

Random Orbital Sander

Aggressive Removal Applications

- Unique epicycloidal sanding action allows aggressive removal of material
- Applications include removal and leveling of large amounts of filler materials such as glue or epoxy; removing coatings
- For use on materials including solid surfaces, wood and fiberglass
- Ergonomically designed for low vibration and reduced sound levels
- Excellent comfort and control, especially when working on vertical sides or large tabletops. Long handle allows for two-hand support of tool



Epicycloidal
Motion
Aggressive Sanding

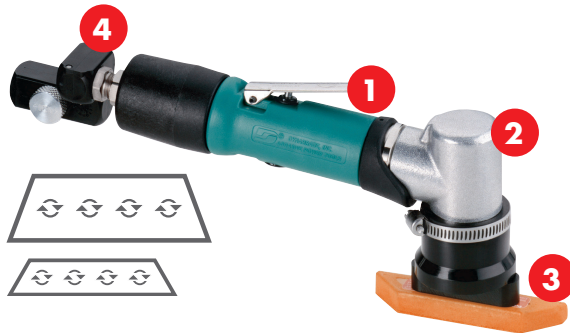
Item #	Size	Pad Type	RPM	HP	Vacuum Type
DB58445	8"	PSA	900	.45	Non-Vacuum
DB58040	11"	Hook & Loop	950		Non-Vacuum
DB58041					Central Vacuum

Additional Specifications: Air Inlet Thread 1/4" NPT. Air Pressure 90 PSIG.

A DYNABRADE DYNAFINE® SANDERS

Raised Panel Sander

Item #: DB57906



For full specifications see page V-13

	Features (All Tools)	Benefits
1	Comfort Grip	Ergonomically designed to fit naturally in operator hands
2	7° Offset handle	Greater operator comfort and control
3	1/32" Diameter Orbit	Provides ultra-fine finishes
4	Flow control swivel	Enhanced maneuverability

Dynafine® Detail Sanders
Air-Powered Finishing Sanders



Excellent for Use in Tight Corners

The Dynafine® sander is a must have tool for woodworkers. The ultra-fine 1/32" orbit delicately scuffs surfaces for paint, stain or other finish coatings without undercutting. Additionally, a variety of pad shapes allow operators to easily navigate furniture curves, sand in corners, and evenly finish raised panel cabinetry. Solid Surface fabrications benefit from specifically designed pad backings for covered backsplashes as well as specially designed scraper attachment for glue squeezes.

Finger Sander

Item #: DB57930



Detail Sander

Item #: DB58017 (Central Vac, shown)

Item #: DB57900 (Non Vac)



Shown with a tear-drop pad the Dynafine® sander finishes corners other sanders cannot reach.



When equipped with raised panel pads, the Dynafine® evenly finishes recesses in cabinetry.



In finger sander format the Dynafine® navigates difficult to sand areas with ease.

DYNABRADE DYNAFINE® SANDERS



Dynafine® "Backsplash" Sander Air-Powered Finishing Sander

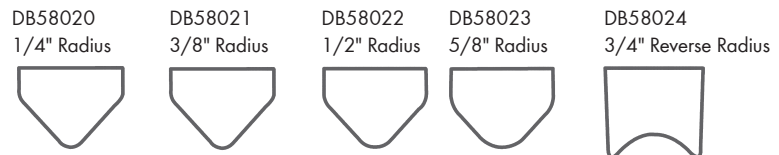


A Must for Solid Surface Fabricators

- Excellent for fabricating solid surface covered backsplashes; ideal for cleaning metal edges and corners
- Air motor features 1/32" diameter orbital action for achieving a superior finish
- Low profile housing allows easy access in hard-to-reach areas
- Handle is offset 7° for greater operator comfort and control



DB58000



Item #	Orbit	RPM	HP	Vacuum Type
Detail Sanders (From page V-12)				
DB57900	1/32"	13,000	.12	Non-Vacuum
DB57906	1/32"		.12	Non-Vacuum
DB57930	1/32"	15,000	.12	Non-Vacuum
DB58017	1/32"		.12	Central Vacuum
Backsplash Sander (Shown above)				
DB58000	1/32"	13,000	.12	Non-Vacuum

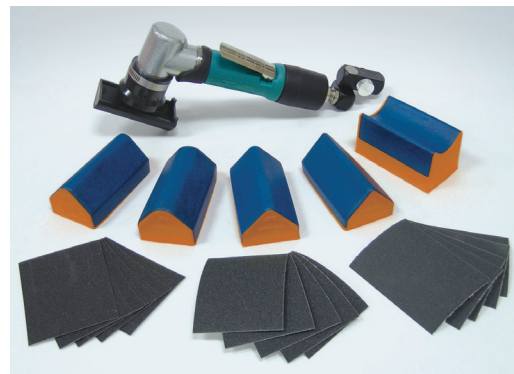
Additional Specifications: Air Inlet Thread 1/4" NPT. Hose I.D. Size 1/4".
Air Pressure 90 PSIG Tune-up Kit: DB96236.

Dynafine® Versatility Kits Air-Powered Dynafine® Finishing Sander



DB57910 Versatility Kit

Includes: DB57900 tool with Hook & Loop and PSA (adhesive-backed) pads, DB94407 Flow-Control Dynaswivel® (not shown) and an assortment of coated and non-woven nylon abrasives.



DB58010 Versatility Kit

Includes: DB58000 tool five sanding pads, an assortment of PSA (adhesive-backed) abrasives and DB94407 Flow-Control Dynaswivel®.

A
B
C
D
E
F
G
H
I
J
K
L
M
N
O
P
Q
R
S
T
U
V
W
X
Y

A DYNABRADE DYNINGER SANDERS

B
C
D
E
F
G
H
I
J
K
L
M
N
O
P
Q
R
S
T
U
V
W
X
Y



Dyninger
Air-Powered Abrasive Finishing Tool

Sand, Defuzz, Blend, Scuff, Denib

- Excellent for blending and scuffing sealer coatings on contours and flat surfaces, sanding raised panels, turnings, moldings, inside diameters and other hard-to-reach areas
- High torque air motor includes 1" dia. arbor for mounting up to six coated abrasive stars (up to 8" dia.) with 1" center hole. Abrasives sold separately
- Defuzz wooden grid pattern panels and denibbing raised grain
- Great for light deburring of metal



Item #	RPM	HP	Wheel Arbor Dia.	Tool Thread	Collet
DB52060	950	.4	5/8" or 1"	3/8"-24 Male	-

Additional Specifications: Air Inlet Thread 1/4" NPT. Hose I.D. Size 1/4". Air Pressure 90 PSIG Tune-Up Kit: DB96173.



Lightweight Dyninger
Air-Powered Abrasive Finishing Tool

Sand, Defuzz, Blend, Scuff, Denib

- For sealer sanding, light deburring of metal, or fabrication and finishing of composite surfaces
- Excellent for use on wooden parts, moldings, raised panels and intricate profiles. Eliminates raised grain and removes loose fibers as well as scuffs
- Tool includes air-flow control Dynaswivel® fitting for maximum tool maneuverability and control
- Mount 4" diameter spindle-mount abrasive sanding stars with 1/4" shank, or Eyelet Sanding Stars (Stars sold separately)

Item #	RPM	HP	Wheel Arbor Dia.	Tool Thread	Collet
DB52050	3,200	.4	-	3/8" -24 Male	1/4"

Additional Specifications: Air Inlet Thread 1/4" NPT. Hose I.D. Size 1/4". Air Pressure 90 PSIG Tune-Up Kit: DB96173.



SURFPREP AIR SANDERS



SurfPrep Low Profile, 3"



- 3" sanders low-profile powerful design is perfect for use on flat or profiled surfaces
- Great for tight applications and hard-to-reach places, saving time from hand sanding
- The perfect choice for touch & repair spot sanding and 'inside radius' sanding
- Can easily be converted into a more "aggressive leveling sander" with the simple addition of a pad saver with SurfPrep Film cut sheets

Includes:

SPSS3: Sander, 12' Air Hose, Variety Pack of both Foam and Film abrasives as well as specialized accessories.

SPS3: Sander only

Item #	Size	Pad Type	Orbit	RPM	HP	Vacuum Type
SPSS3	3"	Hook & Loop	3/16"	12,000	.28	Non-Vacuum
SPS3	3"	Hook & Loop	3/16"	12,000	.28	Non-Vacuum



SurfPrep Orbital Sander, 3" x 4"



- Low profile, compact footprint designed for use on flat surfaces, recessed corners, inside drawer boxes, profiled moldings, etc.
- Consistent sanded finish, no 'crossover scratch' or 'fish hook' marks when used with SurfPrep Foam/Film abrasives
- Reaches effortlessly into tight corners, sanding all areas completely with 12' highly flexible red ball swivel air hose, saving hundreds of dollars annually on costly air leaks by eliminating metal coupler/heavy rubber hose connections
- Can easily be converted into a more "aggressive leveling sander" with the simple addition of a pad saver with SurfPrep Film cut sheets

Item #	Size	Pad Type	Orbit	RPM	HP	Vacuum Type
Storm Sanding System						
SPSS3X4KIT	3" x 4"	Hook & Loop	3mm	10,000	.24	Non-Vacuum
SPSS3X4CV	3" x 4"	Hook & Loop	3mm	10,000	.24	Central Vacuum
Storm Sanders						
SPS3X4	3" x 4"	Hook & Loop	3mm	10,000	.24	Non-Vacuum
SPS3X4CV	3" x 4"	Hook & Loop	3mm	10,000	.24	Central Vacuum
SPS3X4SGV	3" x 4"	Hook & Loop	3mm	10,000	.24	Self Generated

A
B
C
D
E
F
G
H
I
J
K
L
M
N
O
P
Q
R
S
T
U
V
W
X
Y

A SURFPREP AIR SANDERS



SurfPrep "Trident" Sanders, 5" & 6"



- Lightweight, durable composite body and a compact, recessed throttle lever
- Ergonomically balanced for added comfort and control for the operator
- Cutting edge 'cooling fan' creates air flow around the counter balance spindle bearing which enhances the life of the tool
- Motor assembly is constructed of hardened steel for the cylinder and both end plates
- 360° swivel exhaust grate allows operator to redirect air flow, no external cap/filter to lose or damage

Item #	Size	Pad Type	Orbit	RPM	HP	Vacuum-Type
PSA Pad						
SPTS5PSA316	5"	PSA	3/16"	12,000	.28	Non-Vacuum
SPTS5PSA332	5"	PSA	3/32"	12,000	.28	Non-Vacuum
Hook and Loop Pad						
SPTS5HL316	5"	Hook & Loop	3/16"	12,000	.28	Non-Vacuum
SPTS5HL332	5"	Hook & Loop	3/32"	12,000	.28	Non-Vacuum
SPTS6HL316	6"	Hook & Loop	3/16"	12,000	.28	Non-Vacuum
SPTS6HL332	6"	Hook & Loop	3/32"	12,000	.28	Non-Vacuum
SPTS5HL316CV	5"	Hook & Loop	3/16"	12,000	.28	Central Vacuum
SPTS5HL332CV	5"	Hook & Loop	3/32"	12,000	.28	Central Vacuum

**For SurfPrep Pads & Abrasives,
See Section Q**

SURFPREP AIR SANDERS



SurfPrep Orbital Sander, 3-2/3" x 7"



- The 3-2/3" x 7" large footprint is perfect for sanding large/flat surface areas where round sanders do not fit
- Reaches effortlessly into corners, sanding all areas completely with 12' highly flexible red ball swivel air hose

NOTE: Non-Vacuum models shown. Self-Generated Vacuum and Central Vacuum set-ups available.

Includes: SPSS3X7: Sander, 12' Air Hose, Variety Pack of both Foam and Film abrasives as well as specialized accessories. **SPS3X7:** Sander only.

Item #	Size	Pad Type	Orbit	RPM	HP	Vacuum Type
SPSS3X7	3-2/3" x 7"	Hook & Loop	3/16"	10,000	.24	Non-Vacuum
SPS3X7	3-2/3" x 7"	Hook & Loop	3/16"	10,000	.24	Non-Vacuum



A

SurfPrep Sander Accessories



Item #	Description
Exhaust Kits	
A	SP10KEK Exhaust Kit, for use with 3" x 4" and 3-2/3" x 7" air sanders
Air Hoses	
B	SP12H 12' air hose with ball swivel and 1 oz bottle air tool oil
	SP24H (shown) 24' air hose with ball swivel and 1 oz bottle air tool oil
Vacuum Bags	
C	SPVBI Vacuum Bag Inserts, Pack of 10
SurfPrep Lubricating Oil	
-	SPTOIL Tool Oil, 1 fl. oz.



B



C

A
B
C
D
E
F
G
H
I
J
K
L
M
N
O
P
Q
R
S
T
U
V
W
X
Y

A SURFPREP ELECTRIC SANDERS

B
C
D
E
F
G
H
I
J
K
L
M
N
O
P
Q
R
S
T
U
V
W
X
Y



SurfPrep "Ray" Sanders, 3" x 4", Electric



- The tool's computer board is completely protected with a patented rubberized seal preventing environmental contamination
- Patented spindle bearing fan enhances life by keeping motor & bearings at a lower temperature
- Two override protection programs to enhance the life of the tool

Note: Sanding Systems include sander as well assortment of Foam and Film abrasives and specialized accessories.

Item #	Size	Pad Type	Orbit	RPM	Vacuum Type
Ray Sanding System					
SPES3X4CV	3" x 4"	Hook & Loop	3mm	4,000 - 9,000	Central Vacuum
Ray Sanders					
SPES3X4	3" x 4"	Hook & Loop	3mm	4,000 - 9,000	Non-Vacuum
SPES3X4CV	3" x 4	Hook & Loop	3mm	4,000 - 9,000	Central Vacuum



SurfPrep "Ray" Sanders, 5", Electric



- Patented spindle bearing fan enhances life by keeping motor & bearings at a lower temperature
- Quick-stop speed reduction stops backup pad from spinning when pressure is taken off of throttle lever
- Downforce Overload System' protects from excessive pressure
- Temperature Overheat System' monitors temperature of internal electronic systems

Item #	Size	Pad Type	Orbit	RPM	Vacuum Type
PSA Pad					
SPES5PSA316	5"	PSA	3/16"	4,000 - 10,000	Non-Vacuum
SPES5PSA332	5"	PSA	3/32"	4,000 - 10,000	Non-Vacuum
Hook and Loop Pad					
SPES5HL316	5"	Hook & Loop	3/16"	4,000 - 10,000	Non-Vacuum
SPES5HL332	5"	Hook & Loop	3/32"	4,000 - 10,000	Non-Vacuum

Did you Know?
Surfprep Electric Sanders Plug Directly Into the Wall?

3M AIR SANDERS

A
B
C
D
E
F
G
H
I
J
K
L
M
N
O
P
Q
R
S
T
U
V
W
X
Y



3M™ Elite Series, 5"



- Stikit™ Pad included with each sander
- Extended cover with 3M™ Gripping Material reduces vibration
- Aluminum housing for added durability
- Internal muffler provides less breakage, SGV 6 dB quieter

Item #	Size	Pad Type	Orbit	RPM	HP	Vacuum Type
MA28497	5"	PSA	3/16"	12,000	.28	Non-Vacuum
MA28498	5"	PSA	3/32"	12,000	.28	Non-Vacuum



3M™ Original Series, 5" & 6"



- Precision-balanced steel workings run smoothly with less vibration, ideal for high production industrial environments
- Aluminum body and durable composite cover reduce cracked housings and downtime
- Self generated sanders include filter bag, adapter and hose seal

Item #	Size	Pad Type	Orbit	RPM	HP	Vacuum Type
MA20317	5"	PSA	3/16"	12,000	0.24	Non-Vacuum
MA20319	5"	Hook & Loop	3/16"	12,000	0.24	Self Generated
MA20325	6"	PSA	3/16"	12,000	0.24	Non-Vacuum
MA20327	6"	Hook & Loop	3/16"	12,000	0.24	Self Generated



Clean Sanding Filter Bag



- Achieves superior dust collection when used with 3M™ Random Orbital Sanders with Self-Generated Vacuum
- Large size holds up to .5 pounds of dust

Item #
MA20452

**For 3M Pads & Abrasives,
See Section Q**

A GEM SANDERS



GEMBWHL5

**NOT JUST FOR
SOLID SURFACE
SANDING!**

GEM Electric Orbital Sander, 11"



- Runs at 1,700 "orbits" minute without the possibility of creating the swirl marks associated with high-speed rotary buffers
- GEM's counter weight system is well balanced and smooth running, so you can guide the sander over the surface and let the 18 lbs. of weight do the work for you
- GEM's orbital action sands, polishes and finishes with a motion like that of the human hand
- Sands equally well and uniformly on solid surface and wood products
- Comes with a Hookit fastening system

Features:

- Heavy-duty ball bearing capacitor motor
- No gears to grind or strip out
- No armature winding to burn out
- No carbon brushes to burn out
- Exclusive removable shaft system
- Sands, polishes and finishes

Item #	Description	Pad Size	RPM
GEMBWHL	Sander without Shroud	11"	1,700
GEMBWHL5	Sander with Shroud	11"	1,700
GEMC515CH	Drive Pad, Standard		
GEMC515HDH	Drive Pad, Firm		
GEMS112	Shroud only		



A



B

GEM Sander Polishing Accessories



- Accessories for GEM sanders



C



D

	Item #	Description
A	GEMC523S	Acrylic Counter Sealant, 32oz
B	GEMC645S	Solid Surface Compound, 32oz
C	GEMM15	Micro Fiber Bonnet
D	GEMM16	Micro Fiber Bonnet, Hi Pile
-	GEMMFT	Micro Fiber Towel, 16" x 16"

FESTOOL SANDERS



ETS 125 REQ-Plus Random Orbital Sander

FESTOOL

- Ergonomically formed to fit comfortably in any size hand
- Compact and light weight enough for extended vertical and overhead use
- Step-less variable speed allows you to adjust to the needs of the application
- Balanced vibration stop (VS) design delivers better finish results, smooth operation and greater comfort
- Jetstream design delivers highly efficient dust removal, resulting in cleaner air, better finishes, and longer abrasive and pad life
- Includes: StickFix Soft Sander Backing Pad, Festool Protector, Longlife dust bag, Systainer SYS3 M 187

Item #	Size	Pad Type	Orbit	Vacuum Type
FST576070	5" (125mm)	Hook & Loop	0.079" (2mm)	Self Generated



ETS EC 125/3 EQ-Plus Random Orbital Sander

FESTOOL

- Compact design and ergonomic grip for greater flexibility in all sanding tasks with less user fatigue
- Power through the toughest demands with EC TEC brushless motors delivering a constant powerful stream of performance
- Designed with dust extraction efficiency in mind the ETS EC sander integrates seamlessly into the Festool sanding solutions system
- Innovative features, which include Jetstream dust extraction, extraction connection signal, electronic active vibration stop, carbide-tipped sanding brakes and much more
- Includes: StickFix Soft Sander Backing Pad, Screwdriver (WAF 5), Systainer SYS3 M 187

Item #	Size	Pad Type	Orbit	Vacuum Type
FST576340	5" (125mm)	Hook & Loop	1/8" (3mm)	Central Vacuum

For Festool Pads & Abrasives, See Section Q

A
B
C
D
E
F
G
H
I
J
K
L
M
N
O
P
Q
R
S
T
U
V
W
X
Y

A FESTOOL SANDERS



RO 150 FEQ Rotex Multi-Mode Sander

FESTOOL

- Three tools in one for coarse sanding, fine sanding, and polishing
- The most powerful ROTEX sander to take on any job
- Eccentric motion for high-quality, scratch-free surfaces
- ROTEX Rotary Motion for extremely high material removal rate during coarse sanding
- Ideal ergonomic grip positions
- Sanding up to the edge thanks to the Festool Protector
- **Includes:** MULTI-JETSTREAM 2 FastFix sanding pad (150mm), Festool Protector, Systainer SYS3 M 237

Item #	Size	Pad Type	Orbit	Vacuum Type
FST576028	6" (150mm)	Hook & Loop	3/16" (5mm)	Central Vacuum

K STL 450 Inspection Light

FESTOOL



FST202912

- Illuminates the surface to clearly show flaws and defects so you can perfect your work
- With 1,200 lumen and a color temperature of 5,000K, the STL 450 brings great brightness and color to any surface
- Impact-resistant, non-marring full body protection, there is little risk of surface damage further ensuring great results

Item#	Description
FST201938	STL 450 Light only
FST202912	STL 450 Light, ST DUO Tripod and AD-ST DUO 200 Adapter

R LED Inspection Light



- Helps sanding machine operators and sanding table personnel to see defects before they end up in the finishing room
- Low angle lighting silhouettes the scratch patterns and any surface imperfections
- Each LED has a 30,000 to 50,000 hour life span
- LEDs are very resistant to shock and vibration and gives off very low heat per lumen for operator comfort
- Warm 5,500-6,000 K light temperature is closer to daylight, which is better for color rendition
- Lenses keep the light on the table and not in the eyes of the operator
- Even, high intensity light

Item #	Length	Bulb Count
SPIL-24	24"	24
SPIL-40	40"	40

PNEUMATIC STAPLERS



Stapler, 18 Gauge 1/4" Narrow Crown

PORTER CABLE.

- Tool-free depth-of-drive adjustment with detents for proper setting of nail heads
- Removable non-marring nose tip with on tool storage
- Special hardened driver blade for longer life
- Low staple reload indicator to alert when to reload

Item #	Gauge	Range	Capacity
PCBNS150B	18	1/2" - 1-1/2"	100 Staples



Stapler, 18 Gauge 1/4" Narrow Crown

SENCO®

- Features E-Z Load/ E-Z Clear system
- NeverLube design requires no lubrication

Item #	Gauge	Range	Capacity
SNCSKSL	18	3/4" - 1-1/2"	158 Staples



Stapler, 18 Gauge 1/4" Narrow Crown

SENCO®

- Adjustable depth-of-drive for precise staple setting
- No-mar pad keeps work surfaces free of marks
- Oil-free design means easier maintenance and no lubrication to stain fine wood

Item #	Gauge	Range	Capacity
SNCSLS25XP	18	3/8" - 1-1/2"	145-168 Staples



Stapler, 18 Gauge 1/4" Narrow Crown

SENCO®

- Magnesium body delivers an ultra-light tool
- Selectable trigger lets you choose between high productivity or precision placement
- Metal cylinder for increased durability
- Re-load indicator on magazine
- 5 year warranty
- Includes wrenches, no-mar pad, case, plug

Item #	Gauge	Range	Capacity
SNC1W0021N	18	1/2" - 1-1/2"	110

A
B
C
D
E
F
G
H
I
J
K
L
M
N
O
P
Q
R
S
T
U
V
W
X
Y

A PNEUMATIC PINNERS



SNCTN11G1

MicroPinner, 23 Gauge

- NEVERLUBE® oil-free design eliminates the risk of oil spillover onto the work surface
- Ergonomic angled "pistol-grip" handle improves control of the tool for comfortable all day operation
- Rear exhaust with embedded muffler includes 1/4" swivel air plug
- Reversible belt hook mounts to either side of the tool
- Magazine automatically conforms to fit different pin lengths
- Low load indicator
- Ultra-narrow nosepiece for easy access to tight corners and other hard to reach areas
- Last nail lockout prevents dry firing
- Dual trigger as an added safety precaution to prevent accidental fires
- 5 year warranty
- Includes case, swivel air plug and wrench

Item #	Gauge	Range	Capacity
SNCTN21L1	21	5/8" - 2"	200
SNCTN11G1	23	1/2" - 1-3/8"	100
SNCTN11L1	23	1/2" - 2"	100

B
C
D
E
F
G
H
I
J
K
L
M
N
O
P
Q
R
S
T
U
V
W
X
Y



MicroPinner, 23 Gauge

- Convenient bottom-load magazine
- Rear exhaust - directs oil and dust away from user
- Dual trigger feature
- Low pin reload indicator
- Includes sample 23 gauge pins, 1/4" air fitting with dust cover, oil, wrench, and carrying case

Item #	Gauge	Range	Capacity
PCBPIN100	23	1/2" - 1"	170 Pins

**For Staples, Brads,
Pins & more,**

See Section P

PNEUMATIC PINNERS/BRADDERS



MicroPinner/Bradder, 23 Gauge

- Auto adjust push for different lengths
- Lock-out to prevent dry firing
- Removable no mar tip; belt hook
- Steel driver blade; for longer life
- Rear exhaust with muffler
- Swivel adapter for hose connection

Item #	Gauge	Range	Capacity
WR11191W	23	Microbrads 7/8" - 1-3/8" Micropins 1/2" - 1"	120 Pins or Brads

Shoots both micropins and microbrads

A
B
C
D
E
F
G
H
I
J
K
L
M
N
O
P
Q
R
S
T
U
V
W
X
Y



Brad Nailer, 18 Gauge

- Lightest weight 2 in 1 tool offers both slight and medium head brad nailing
- Muffler ensures quieter operation
- Oil free design means easier maintenance and no lubrication to stain fine woods

Item #	Gauge	Range	Capacity
SNCSLP20	18	5/8" - 1-5/8"	110 Brad Nails



Brad Nailer, 18 Gauge

- Drives slight and medium head 18 gauge brads from 5/8" to 2-1/8"
- NeverLube technology - no lubrication required
- No mar pad
- Overmold comfort grip, and trigger, 360° adjustable exhaust, and belt hook

Item #	Gauge	Range	Capacity
SNCFINPRO25	18	5/8" - 2-1/8"	110 Brad Nails

A AIR TOOL ACCESSORIES



Air Line Connectors

Improve tool maneuverability and minimize operator fatigue with a "universal-joint". Two pivot points that swivel 360° relieve stress on the hose and hardware.



- Composite - no marring paint or clear coat
- Aluminum, Plated Steel, Brass - durable metal construction
- Flow Control - finger-tip air-flow control dial or lever

Item #	Thread Size	Style	Air Flow Range	Material
DB94300	1/4" NPT	Standard	up to 33 SCFM	Composite & Plated Steel
DB94407	1/4" NPT	Flow Control	up to 46 SCFM	Composite & Plated Steel
DB95461	3/8" NPT	Standard	up to 45 SCFM	Aluminum
DB95756	1/4" NPT	Flow Control	up to 25 SCFM	Chrome Plated Brass



DB94300



DB94407



DB95461



DB95756



Coupler and Plug Combinations
Plugs With Steel/Brass Safety Couplers



- Includes one coupler and one plug
- Maximum working pressure: 150 PSIG (10 Bar)
- Temperature Range: -4°F to 212°F (-20°C to 100°C)

Item #	Coupler Thread Size NPT	Plug Thread Size NPT	Air Flow Range SCFM
DB95676	1/4" Female	1/4" Male	up to 74
DB95851	1/4" Male	1/4" Female	
DB98265	3/8" Female	3/8" Male	
DB98268	3/8" Male	3/8" Female	

AIR TOOL ACCESSORIES



Polyurethane Air Hose, Field Repairable



- Retains flexibility in subzero temperatures (down to -40° F)
- Resistant to lubricating oils, greases and abrasion

Item #	Hose I.D	Length	Fittings, NPT
WR69991425	1/4"	25'	1/4"
WR69991450	1/4"	50'	1/4"



Max Flow Air Hose Assembly Lightweight Air Lines – 5/16" I.D.



- 66% lighter than conventional hoses
- Great flexibility and tool maneuverability, reduces operator fatigue
- Includes reusable fittings, ensuring air line integrity
- Narrow bending radius prevents "choking" of air tool

Item #	Length Feet (Meters)	Line I.D. Inches (mm)	Line O.D. Inches (mm)	Fittings Included (All 1/4")
DB94851	12'	5/16"	1/2"	Male / Male
DB94852	12'	5/16"	1/2"	Male / Female
DB94876	25'	5/16"	1/2"	Male / Male
DB94892	25'	5/16"	1/2"	Male / Female
DB94853	50'	5/16"	1/2"	Male / Male
DB94854	50'	5/16"	1/2"	Male / Female



Air Tool Accessories Cost Effective And Performance Enhancing



Filter/Regulator/Lubricator

Using a Dynabrade F-R-L at every work station will extend the service life of the tools at an operator's bench. A F-R-L will filter debris/water hidden inside air lines, allow operators to regulate air pressure locally, and deliver air tool oil much more consistently than a manual oiling process.

- 106 SCFM for high demand tools
- 5-micron filter
- Includes 3/8" NPT reducer bushings
- Use with Dynabrade Air Lube (DB95842)

Item #	Inlet/Outlet Port Size	Max Air Pressure	Max Air Flow	Max Air Temp
DB10690	1/2" NPT	150 PSIG	106 SCFM	150° F

	Feature	Benefit
1	Mounting brackets	For easy installation
2	Manual filter/drain	Protects tools from water and contamination
3	Modular connections	Easily adaptable
4	Regulator and pressure gauge monitor	Adjusts air pressure
5	Adjustable oil drop	Set drip rate based on tool consumption
6	Zinc construction	For enhanced durability

AIR TOOL ACCESSORIES

A
B
C
D
E
F
G
H
I
J
K
L
M
N
O
P
Q
R
S
T
U
V
W
X
Y



In-Line Blow Gun



- Unique “full flow” straight-through design will not restrict downstream air flow
- Made of zinc and chrome-plated for durability and superior corrosion resistance
- Becomes a standard blowgun when one of the two 1/4” ports are plugged

Item #	NPT	Max Pressure	SCFM	OSHA Compliant
WR17149227	1/4”	150 PSI	13	Yes



In-Line Blow Gun



- Clean off work surfaces without disconnecting
- Only connect once; permanently mounts between coupler and air hose to purge air line of water and contaminants before starting up air tools
- Durable aluminum construction, weighs only 2 oz. (0.06 kg)

Item #	NPT	Max Pressure	SCFM	OSHA Compliant
DB94467	1/4”	150 PSI	5.5	Yes



Air Tool Lubricant, Mineral Base Oil



- Air Lube is specifically formulated to be a lubricant for pneumatic equipment
- Absorbs up to 10% of its weight in water
- Prevents rust and infirmation of gum/sludge for longer tool operation with greater power
- Contains no wax
- Helps to prevent downtime

Item #	Size
DB95842	16 fl. oz.



Senco Air Tool Oil



- Premium grade oils with high-quality paraffin distillate stocks

Item #	Size
SNPC102	32 fl. oz.

JOINERS

A
B
C
D
E
F
G
H
I
J
K
L
M
N
O
P
Q
R
S
T
U
V
W
X
Y



Lamello P System Biscuit Joiner



- Extremely fast joining method using a power tool
- Rapid, simple and precise working in the familiar manner like with Lamello biscuit joiners
- Identical grooves on both work pieces, saving time by removing the need for depth adjustments and minimizing the risk of errors
- Fitting installation with innovative profile groove technology greatly reduces labor time while also negating the need for additional fastening materials
- 5 different cutting depths for various connecting fittings
- Also compatible with biscuits and other 4 mm fittings
- **Includes:** Tool, drill jig and systainer case

Item #
CS101402S



Biscuit Joiner



- Fence tilts from 0 to 135 degrees with positive adjustable stop at 90 degrees
- 7 position rotating depth stop for FF, #0, #10, #20, biscuits Simplex, Duplex, and Max (#6) biscuits

Item #	Description
PCB557	Biscuit Joiner



Standard Compressed Beech Wood Biscuits



- Flat ends so surplus glue remains inside the groove
- Sold in full boxes of 1,000

Biscuit Size	Lamello Item #	Porter Cable Item #
#0	CS144000	-
#10	CS144010	PCB5552
#20	CS144020	PCB5553

A JOINERS



Domino DF 500 Mortise and Tenon Joiner Set **FESTOOL**

- Domino Joiner DF 500 Q Set (including trim stop and cross stop) for fast, easy and strong mortise and tenon joining
- Unique, patented cutting action that rotates and oscillates to create perfect, clean, and repeatable mortises every time
- Mortise width adjustment with the turn of a dial allows for easier alignment when joining panels
- Pivoting Fence allows you to create angled mortises from 0-90° with positive stops at 22.5°, 45°, 67.5°
- Indexing pins for quick alignment against the edge of the workpiece for accurate placement
- Rapid bit change means you can change a bit in under 30 seconds to match desired tenon size

Item #
FST574432

Domino Cutters

NOTE: For use with Festool® Domino DF 500 Joiner only.



FST493490

Item #	Description
FST495663	Tenon Size: 4mm
FST493490	Tenon Size: 5mm
FST493491	Tenon Size: 6mm
FST493492	Tenon Size: 8mm
FST493493	Tenon Size: 10mm



Domino DF 500 Tenon Assortment **FESTOOL**

- Includes three plastic, removable storage bins with dividers
- Assortment includes 5 Cutters (4,5,6,8 and 10mm), Domino Assortment Systemainer, and 1060 tenons in assorted sizes

Item #	Size
FST498899	4mm - 10mm

For additional DF500 & DF700 Tenons,
See Page V-32

JOINERS

A
B
C
D
E
F
G
H
I
J
K
L
M
N
O
P
Q
R
S
T
U
V
W
X
Y



Domino DF 700 Mortise and Tenon Joiner Set

FESTOOL

- Unique, patented cutting action that rotates and oscillates to create perfect, clean, and repeatable mortises every time
- Mortise width adjustment with the turn of a dial allows for easier alignment when joining panels
- Indexing pins for quick alignment against the edge of the work piece for accurate placement
- Tenons up to approximately 5-1/2-Inch in length for large scale projects
- Trim and cross stops for narrow stock and edge joining
- Includes: Trim Stop, Cross Stop, DF 700 XL 12mm cutter, Dowel Box, Open Ended Spanner, Support Bracket, Systainer SYS 5 TL

Item #
FST574447

Domino Cutters

NOTE: For use with Festool® Domino DF 700 Joiner only.



FST497868

Item #	Description
FST497868	Tenon Size: 8mm
FST497869	Tenon Size: 10mm
FST497870	Tenon Size: 12mm
FST497871	Tenon Size: 14mm



Domino DF 700 Tenon Assortments

FESTOOL

- **FST498204 Assortment includes:** 2 Cutters (8 and 10mm), Domino Assortment Systainer, and tenons in assorted sizes 8mm - 10mm
- **FST498205 Assortment includes:** 1 Cutter (14mm), Domino Assortment Systainer, and tenons in assorted sizes 12mm - 14mm

Item #	Size
FST498204	8mm - 10mm
FST498205	12mm - 14mm

A JOINERS



Beech Domino



Sipo Domino

Domino Tenons

FESTOOL

- Domino Beech tenons are made from solid hardwood stock and are for indoor applications
- Domino Sipo tenons are made from African Mahogany. Rot-resistant and ideal for outdoor applications
- Sold by the box

Size	Beech Domino	Box Qty	Sipo Domino	Box Qty
4MM Dominos (DF 500)				
4mm x 17mm x 20mm	FST495661	450	-	-
5MM Dominos (DF 500)				
5mm x 19mm x 30mm	FST494938	300	-	-
5mm x 19mm x 30mm	FST493296	1,800	FST494859	900
6MM Dominos (DF 500)				
6mm x 20mm x 40mm	FST494939	190	FST494870	190
6mm x 20mm x 40mm	FST493297	1,140	FST494860	570
8MM Dominos (DF 500 & DF 700)				
8mm x 22mm x 40mm	FST494940	130	FST494871	130
8mm x 22mm x 40mm	FST493298	780	FST494861	390
8mm x 22mm x 50mm	FST494941	100	FST494872	100
8mm x 22mm x 50mm	FST493299	600	FST494862	300
8mm x 750mm	FST498686	36	FST498690	36
10MM Dominos (DF 500 & DF 700)				
10mm x 24mm x 50mm	FST494942	85	FST494873	85
10mm x 24mm x 50mm	FST493300	510	FST494863	255
10mm x 750mm	FST498687	28	FST498691	28
12MM Dominos (DF 700)				
12mm x 26mm x 100mm	FST498216	100	-	-
12mm x 26mm x 140mm	FST498217	90	-	-
12mm x 750mm	FST498688	22	FST498692	22
14MM Dominos (DF 700)				
14mm x 28mm x 100mm	FST498218	80	-	-
14mm x 28mm x 140mm	FST498219	70	-	-
14mm x 750mm	FST498689	18	FST498693	18

FESTOOL DUST EXTRACTION



**CT SYS Clean-Tec Dust Extractor
Full Unit HEPA Certification**

FESTOOL

- Portable and compact, yet loaded with features such as tool-triggered operation, high-performance suction, and Systainer integration
- Includes: fitted filter bag, smooth suction hose with rotating angle adapter on the extractor side, hose holder, SYS-Dock with T-LOC function, Upholstery Brush, Crevice Nozzle, D36, Shoulder Strap SYS-TG

Item #	Type	Hose Size	Container/Bag Capacity	Sound Level	Size	Weight
FST575280	CT SYS	1-1/16" x 9.8'	1.2 gal / 0.9 gal	67 dBA	15.6" D x 11.6" W x 10.6" H	15.2 lb



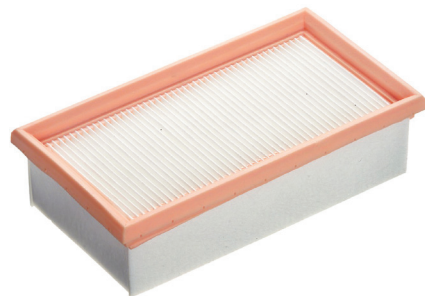
A

Festool CT SYS Dust Extractor Accessories

FESTOOL

- Accessories for Festool 575280 Dust Extractors
- Check manual for compatibility with additional dust extractor models and accessories
- All sold by each, except FST500438 sold by pack of 5

Main Filter (A)	Main Filter - HEPA (B)	SELF-CLEAN Filter Bags (C)	Longlife Filter Bag (D)
FST500558	FST200340	FST500438	FST500642



B



C



D

A
B
C
D
E
F
G
H
I
J
K
L
M
N
O
P
Q
R
S
T
U
V
W
X
Y

A FESTOOL DUST EXTRACTION



**CT MIDI I Clean-Tec Dust Extractors
Full Unit HEPA Certification**

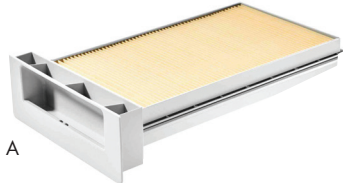
FESTOOL

- Touch controls for intuitive operation of the dust extractor
- Start and stop remotely with use of the integrated Bluetooth® technology (when used with optional Bluetooth® Remote control (FST202098) or tools with Bluetooth® Battery Packs)
- Change dust filters quickly, easily, and tool-free
- Includes: Smooth suction hose, SELFCEAN filter bag, hose holder, cable holder, SYS-Dock with T-LOC function

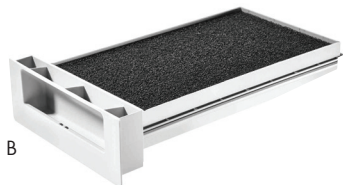
Item #	Type	Hose Size	Container/Bag Capacity	Sound Level	Size	Weight
FST574837	CT MIDI I	1-1/16" x 11.5'	4.0 gal / 3.3 gal	62 - 72 dBA	18.5" D x 12.6" W x 19.5" H	24.91 lb

**L MINI I, MIDI I, and CT 15 E Clean-Tec
Dust Extractor Accessories**

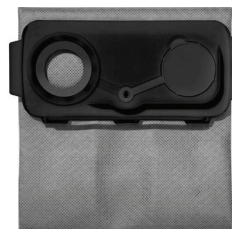
FESTOOL



- Accessories for Festool 574831, 574837 and 574845 Dust Extractors
- Check manual for compatibility with additional dust extractor models and accessories
- All sold by each, except FST204308 sold by pack of 5



Main Filter - HEPA (A)	Wet Filter (B)	SELFCEAN Filter Bags (C)	Longlife Filter Bag (D)
FST204201	FST204202	FST204308	FST204309



FESTOOL DUST EXTRACTION

A
B
C
D
E
F
G
H
I
J
K
L
M
N
O
P
Q
R
S
T
U
V
W
X
Y

FESTOOL

CT 26 E and CT 36 E Clean-Tec Dust Extractors Full Unit HEPA Certification



FST577084

- Large container capacity for any jobsite or in the workshop
- Can be individually retrofitted with Bluetooth® module for remote starting when used with optional Bluetooth® Remote Control CT-F I, or Bluetooth® Battery Pack
- High-performance turbine for the right suction power
- Equipped with swiveling front caster wheels and large rear wheels for optimum mobility
- Includes: High-performance Filter, SELFCLEAN Filter Bag, Smooth Antistatic Suction hose, Hose Holder, Cable Holder, SYS-Dock with T-LOC function

Item #	Type	Hose Size	Container/Bag Capacity	Sound Level	Size	Weight
FST577083	CT 26 E	1-1/16" x 11.5'	6.9 gal / 6.3 gal	62 - 71 dBA	2.48" D x 14.4" W x 21.3" H	28.7 lb
FST577084	CT 36 E	1-1/16" x 11.5'	9.5 gal / 8.9 gal	62 - 71 dBA	2.48" D x 14.4" W x 23.4" H	29.8 lb

CT 26 E and CT 36 E Clean-Tec Dust Extractor Accessories

FESTOOL



A

- Accessories for Festool 577083 and 577084 Dust Extractors
- Check manual for compatibility with additional dust extractor models and accessories
- All sold by each, except FST496187 and FST496186 sold by pack of 5



B



D



E



C

Dust Extractor	Type	Main Filter - (A)	Main Filter - HEPA (B)	Wet Filter (C)	SELFCLEAN Filter Bags (D)	Longlife Filter Bag (E)
FST577083	CT 26 E	FST496170	FST205412	FST496169	FST496187	FST496120
FST577084	CT 36 E				FST496186	FST496121

A DYNABRADE DUST EXTRACTION



DB10049

**Mini-Raptor Vac® Packs
Mobile Industrial Vacuum Systems**

Designed for peak efficiency, the Pro-Pack equips a single operator with a complete system for sanding and dust collection. Featuring a Vacuum Auto On/Off, the Pro-Pack saves time and energy by automatically turning suction on and off with tool use. The Pro-Pack has on-board, stackable storage to keep abrasives, and tools accessible and organized.

Pro-Pack (DB10049)

Features:

- Premium cart with accessory shelf
- On-board, stackable and lockable storage
- Tool & hose hanger
- Mini-raptor vac® auto on/off
- Industrial locking casters
- Stainless canister with HEPA filter & bag
- 20 ft vacuum hose assembly with integrated air line



**2 YEAR
WARRANTY**



M-Class



DB10051

**Standard Pack
(DB10051)**

Features:

- Carriage handle & dolly
- Stainless canister with HEPA filter & bag
- 20 ft vacuum hose assembly with integrated air line



DB61105

**General Purpose
Cleanup
(DB61105)**

Features:

- Carriage handle & dolly
- Stainless canister with HEPA filter & bag
- Wet/dry cleanup

Included in pack:



Item #				DBX61VHS			
DB10049	X	X		X	X	X	X
DB10051			X	X	X		
DB61105	X		X				X

DYNABRADE DUST EXTRACTION

Component Specifications



Item #	Amp	Cap. Gallon	Power	Watts	Water Static Lift	Air Flow CFM	Height	Width	Length
DB61100	12A	16	6.5 hp	1440	94"	143	28"	21"	18"



Item #	Platform Dimensions	Weight	Shipping Weight	Height	Width	Length
DB61486	18" x 24"	75	89	43.5"	25.3"	30.7"

Mini-Raptor Vac® Pack Accessories



A



B



C



D



E



F

Item #	Description
A DB31972	20 Vac Hose Assembly with integrated air line, (1) 1/4" NPT coupler and (2) 1/4" NPT plugs
B DB61122	HEPA Filter
C DB61169	Vacuum Bag
D DB61126	Wet Collection Sleeve
E DB61562	Vacuum Y-Inlet
F DB61566	Raptor Vac® Auto On/Off
G DB96605	Mini-Raptor Vac® Cleaning Kit



G

A
B
C
D
E
F
G
H
I
J
K
L
M
N
O
P
Q
R
S
T
U
V
W
X
Y

A DYNABRADE DUST EXTRACTION



(Cart optional)

DB61430
Division 2 - 120 V, 60 Hz, 15 amp plug (North America)

**Division II Raptor Vac®
Electric Portable Vacuum**

For Collecting Non-Metallic Dust and Debris

- Designed for general source capture and cleanup
- Powerful suction is ideal for dry-only industrial applications
- Bypass motor system uses clean air to cool the motor and extend vacuum life
- Includes HEPA H14 filter with 99.995% efficiency on 0.3 micron
- Two additional HEPA filters included within powerhead, making powerhead eligible for IP6X
- Top-quality stainless steel body and 10 gallon recovery tank
- Unit is static-dissipating (kit included) and conductive
- Aerosol leak tested for quality assurance
- Equipped with easy-glide cart
- Also connects to optional DB61483 Cart
- Connect two tools simultaneously
- Auto on/off



System Includes:

- Two 20' conductive coaxial hoses with integrated air lines
- "Y" connector
- Two composite couplers
- Two vacuum hose swivel adapters
- Conductive poly liner
- 3/4" x 25' conductive air line supply

Vacuum for use in:

Group F atmospheres, containing combustible carbonaceous dusts, such as coal, carbon black, charcoal, coke dust

Group G atmospheres, containing wood and plastic dusts

Certifications

Designed for use in:
Class II, Division 1, Groups F and G
Hazardous Locations as defined
in the National Electric Code (NFPA 70).

For accessories, See page 40

Item #	Regional Description	Cap. Gal.	Voltage/ Frequency	Watts	Amp (Plug for Region)	Air Inlet Pressure PSIG (Bar)	Water Static Lift	Air Flow CFM	Ship Weight	Height	Width	Length
DB61430	Division 2	10	120 V / 60 Hz	1,200	20	90	107"	110	122	39"	20"	27"

DYNABRADE DUST EXTRACTION



(Cart optional)

DB61440
Division 2 - (North America)

Certifications

Designed for use in:
Class II, Division 2, Groups F and G
Hazardous Locations as defined
in the National Electric Code (NFPA 70).

**Division II Raptor Vac®
Pneumatic Portable Vacuum**

For Collecting Non-Metallic Dust and Debris

- Designed for general source capture and cleanup
- Powerful suction is ideal for dry-only industrial applications
- Includes HEPA H14 filter with 99.995% efficiency on 0.3 micron
- Two additional HEPA filters included within powerhead, making powerhead eligible for IP6X
- Top-quality stainless steel body and 10 gallon (38 liter) recovery tank
- Unit is static-dissipating (kit included) and conductive
- Aerosol leak tested for quality assurance
- Equipped with easy-glide cart
- Also connects to optional DB61483 Cart
- Connect two tools simultaneously
- Auto on/off capable (Sold separately, DB61566)



System Includes:

- Two 20' (6 m) conductive coaxial hoses with integrated air lines
- "Y" connector
- Two composite couplers
- Two vacuum hose swivel adapters
- Disposable collection bag
- Conductive poly liner

Vacuum for use in:

Group F atmospheres, containing combustible carbonaceous dusts, such as coal, carbon black, charcoal, coke dust

Group G atmospheres, containing wood and plastic dusts

For accessories, See page 40

Item #	Regional Description	Cap. Gal.	Air Inlet Pressure PSIG	Air Consumption CFM	Water Static Lift	Air Flow CFM	Ship Weight	Height	Width	Length
DB61440	Division 2	10	90	45*	170"	120	102 (46)	39"	20"	27"

*NOTE: Be sure to add air consumption for EACH TOOL attached to Vacuum, for total CFM (L/Min) requirement.

A
B
C
D
E
F
G
H
I
J
K
L
M
N
O
P
Q
R
S
T
U
V
W
X
Y

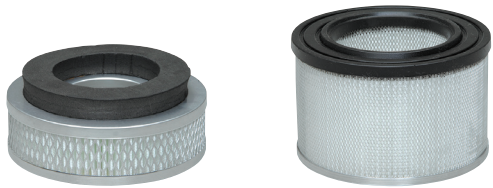
A DYNABRADE DUST EXTRACTION

B
C
D
E
F
G
H
I
J
K
L
M
N
O
P
Q
R
S
T
U
V
W
X
Y

Division II Vacuum Accessories
Build The System To Meet Your Needs



Division 2 - 120 V, 60 Hz, 15 Amp Plug
Electric: DB61430



DB62410

DB62640



DB62647

DB62638

Item #	Description	Qty
DB62410	Cooling HEPA Filter/Intake	1
DB62640	Working Air HEPA Filter/Intake	
DB62483	HEPA Filter/Exhaust	
DB62647	Collection Bag	3-Pack
DB62638	Conductive Poly Liner	5-Pack
DB62719	Pre-Filter	1
DB62449	Grounded Air Line	
DB62414	Micro Safety Filter	

Division 2

Pneumatic: DB61440



DB62483

DB62449



DB62719

DB62414

Item #	Description	Qty
DB62640	Working Air HEPA Filter/Intake	1
DB62677	Pre-Filter	
DB62647	Collection Bag	3-Pack
DB62638	Conductive Poly Liner	5-Pack
DB62449	Grounded Air Line	1
DB62414	Micro Safety Filter	

Conductive Cleaning Kit

Item #: DB96607

For models DB61430, and DB61440

Vacuum Hose, 10 ft. length

