



Accessories

Designation	Part number
TROLLEY 1 ARM	051730110
EQUIPED FILTER 3/8 60B O-RING SEAL W/O SCREEN	155580510

Kits

Designation	Version	Suction	Hose length	Gun	Gun filler	Aircap	Tip	Part number
10C18 + XCITE	W/M	- (M26x125)	7.5 m (23 feet)	Xcite™ 120	◆	VX24	06-094	151665730
10C18 + XCITE	W/M	6.35mm (1/4")	7.5 m (23 feet)	Xcite™ 120	◆	VX24	06-094	151665740
10C18 + XCITE	Tripod	6.35mm (1/4")	7.5 m (23 feet)	Xcite™ 120	◆	VX24	06-094	151665760
10C18 + XCITE	W/M	16 mm (5/8")	7.5 m (23 feet)	Xcite™ 120	◆	VX24	06-094	151665780
10C18 + XCITE	W/M	- (F 1/2 BSP)	-	Xcite™ 120	◆	VX24	-	151665700
10C18 + XCITE	W/M	6.35mm (1/4")	-	Xcite™ 120	◆	VX24	-	151665720
10C18 + XCITE™	Tripod	Straight tube	7.5 m (23 feet)	Xcite™ 120	◆	VX24	06-094	151665770
10C18 + XCITE™ LIGHT	Tripod	6.35mm (1/4")	7.5 m (23 feet)	Xcite™ Light 60	-	VX124	06-094	151665810
10C18 + XCITE™ LIGHT	Tripod	6.35mm (1/4")	7.5 m (23 feet)	Xcite™ Light 60	◆	VX124	06-094	151665820

Spare Parts

Designation	Part number
MAINTENANCE PACKAGE FOR 350 MOTOR	144850150
PU SEAL FOR C18 FLUID SECTION FOR WATER-BASED MATERIAL	144855704
SERVICE KIT C18 FLUID SECTION	144855799

10C18 Airmix®

Paint pump

Airmix® / Pumps



COMPACT AIRMIX® PACKAGE FOR UNSURPASSED FINISHING QUALITY

- Designed for long-lasting industrial use
- Fast color changes with minimum solvent consumption
- Simple design to minimize maintenance time and operation



AGRICULTURAL



INDUSTRIAL



WOOD



10C18 Airmix®

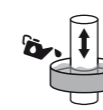
Paint pump

The 10C18 AIRMIX® professional paint sprayer is only available as a complete spraying package. It ensures constant and pulse free delivery for superior finish.

Technologies



GT Sealing



Cup Lub



2 Ball



Triple Chrome Layer

Recommended for small industries to benefit of both Airmix® spray technology advantages and simple and performing Sames Kremlin pump range. Economic solution to handle low viscosity materials (up to 3000 cps) with a very low motor air consumption and a low volume fluid section for fast color changes with a minimum of product loss

The 10C18 Airmix® pump packages are available in either stand or wall-mounted versions (cart mounting as an option). Packages are available with one Xcite™ 120 bar manual Airmix® paint sprayer equipped with or without an 06.094 tip size and 7.5m (25ft) fluid and air hoses. A large variety of accessories and tools is available for any customer needs.

Technical data table

Designation	Value	Unit: metric (US)
Pressure Ratio	10/1	
Maximum Fluid Pressure	60 (870)	bar (psi)
Maximum Air Pressure	6 (87)	bar (psi)
Air Consumption	1.9 (1.12)	m³/h (cfm)
Maximum Temperature	60 (140)	°C (°F)
Sound Level	79.4	dBa
Recommended Air Pressure	2 - 5 (29 - 72.5)	bar (psi)
Fluid Output at 30 cycles/mn	0.54 (0.14)	l/min (gal/mn)
Fluid Output at 20 cycles/mn	0.36 (0.095)	l/mn (gal/mn)
Fluid Volume per Cycle	18 (0.61)	cc
Free Flow Rate	1.1 (0.29)	l/mn (gal/mn)
Fluid Output at 15 cycles / mn	0.27 (0.07)	l/mn (gal/mn)
Air Consumption at 30 cycles/mn at 4 bar (60 psi)	1.9	m³/h (cfm)
Displacement Per Cycle	18 (1.09)	cc (cubic inch)
Motor Type	340-2	
Air Inlet	F3/8" BSP	
Fluid Outlet	M 1/2" JIC	
Fluid Inlet	F 1/2" BSP / M 26x125	
Hard Chrome Stainless Steel, Wetted Parts	♦	
Number of Cycles per liter of products	55	
Sealing Packing Lower PEHD	♦	
Sealing Packing Upper GT cartridge with polyethylene packing	♦	
Height	39.2 (15.5)	cm (in)
Width	27.8 (11)	cm (in)
Depth	15 (5.9)	cm (in)
Wetted Shares: Stainless Steel	♦	
Weight	5.3 (12)	kg (lbs)

PERFORMANCE

- 1 Optimized air motor working perfectly with an air compressor of only 0,5 HP.
- 1 Quiet air motor for comfort.
- 1 Limited pulsation thanks to fast motor inversion even at very low air pressure.
- 2 Full stainless steel fluid section; perfectly adapted to a wide range of materials including waterborne paints.

PRODUCTIVITY

- 3 Large foot valve delivering enough suction power to handle a large range of material viscosity.
- 3 Suction valve fully compatible with other pump on the range (15C25 and 30C25).
- 4 Reduced fluid section volume minimizes product and solvent losses during flushing.
- 5 Closed construction decreases the risk of injuries and protect lubricant from external contamination.

Sustainability

- 3 Easy servicing with direct access to the suction valve.
- 6 Easy coupling for a quick disassembling.
- ♦ The mobile seal located on the piston ensures the mechanical cleaning of the fluid section internal wall during the paint pump run.
- ♦ No external air distributor allows 45% less part vs competitors for a better maintenance.
- ♦ Triple chrome-plated piston parts compatible with all waterborne materials.
- ♦ Single GT seal, no throat packing maintenance, low friction & large lubricant wet cup.

Description

