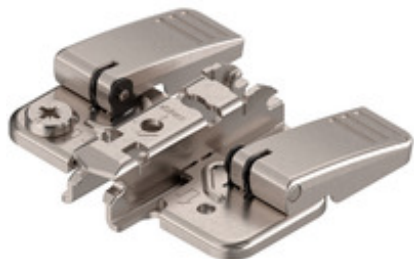


Product details

CLIP mounting plate, cruciform, 3 mm, steel, INSERTA, HA: cam



Part number	174H7130I
Item number	02849643
Color / finish	Nickel-plated
Packaging quantity	50 / 250
Weight per 1,000 Pcs in kg	49.84
EAN code	9002617390193
UPC code	

Technical attributes

Attribute	Value
mounting plate system	CLIP
mounting plate shape	Cruciform
material	Steel
bottom part surface	Nickel-plated
mounting	INSERTA
distance cabinet front edge to first mounting location	37
diameter of mounting holes	5
boring depth of mounting holes	11.5
Mounting plates height adjustment	with cam
Height adjustment	+/- 2 mm
height	11.5
spacing	3
angle	0
item package	1 piece
packaging	Commercial packing
bottom part material	Steel