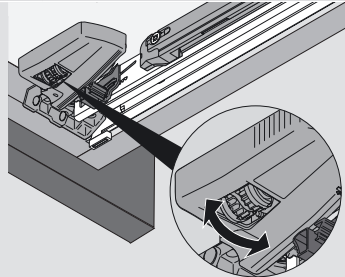


**Front side-to-side adjustment**

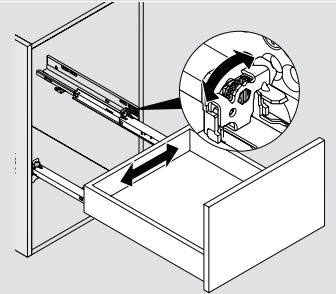
Rotate side-to-side adjustment left or right on both locking devices. Drawer front moves in the same direction as rotation.



Maximum **1.5** (1/16") to left or right (tool-free)

**Rear side-to-side adjustment**

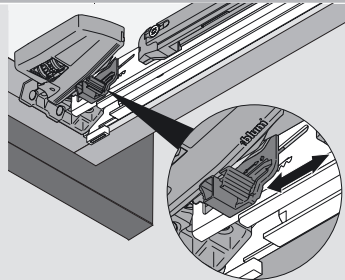
Rotate side-to-side adjustment left or right on the rear hook of the right hand runner. Drawer back moves in the same direction as rotation.



Maximum **1.5** (1/16") to left or right (tool-free)

**Height adjustment**

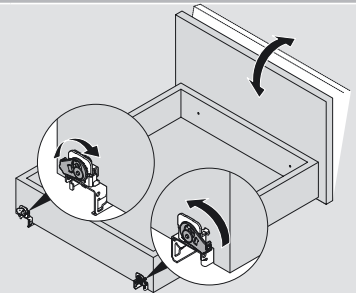
Press up on adjustment tab and push toward back of drawer.



Maximum **3** (1/8") rise of drawer front (tool-free)

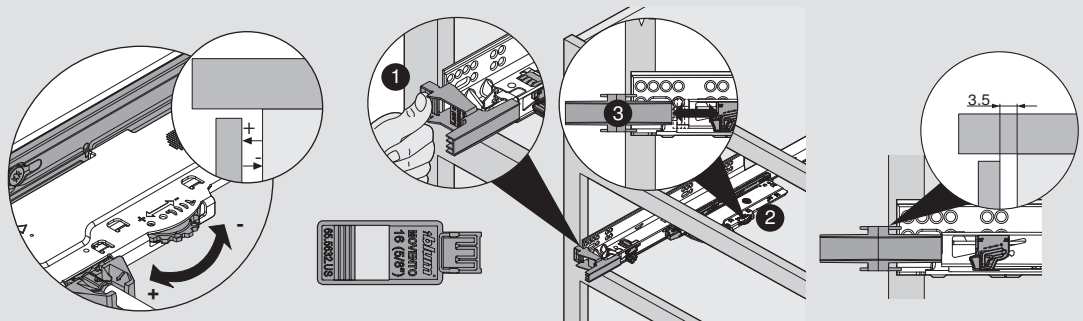
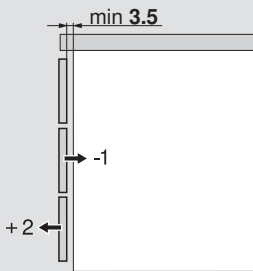
**Tilt adjustment**

Rotate the tilt adjustment lever on the rear of each runner to tilt the top of the drawer front forward.



Maximum **5** (3/16") rise of drawer back (tool-free)

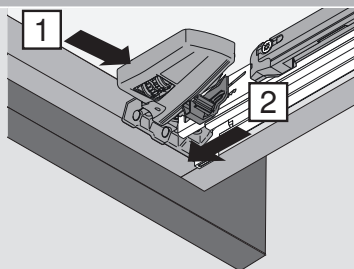
**Depth adjustment**



**NOTE:** For **16** (5/8") sub-front thickness

**Drawer removal**

Squeeze orange release levers on locking devices. Pull drawer out and up.



**Insert drawer**

Extend the runners fully. Place the drawer on the runners and close. The locking devices automatically engage with the runners. Make adjustments if necessary.

