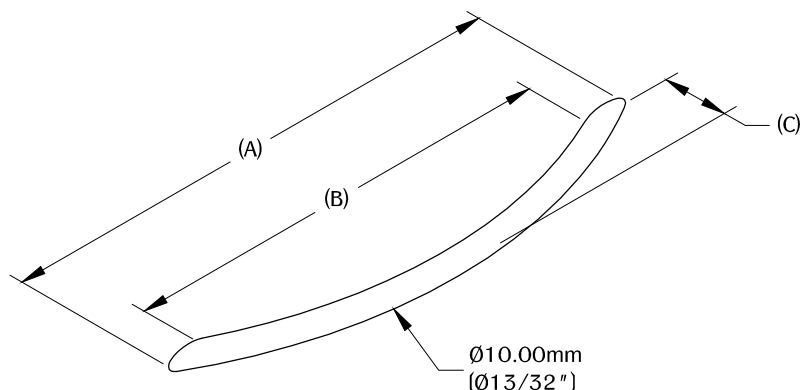


PART #

DP33

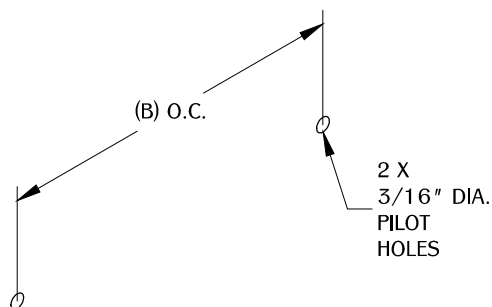
310.318.2491 • 800.523.1269 • www.mockett.com



|               | (A) Length              | (B) O.C.                | (C) Projection       |
|---------------|-------------------------|-------------------------|----------------------|
| DP33A-26M     | 114.00mm<br>(4-1/2")    | 96.00mm<br>(3-25/32")   | 30.00mm<br>(1-3/16") |
| DP33B-26M     | 151.00mm<br>(5-15/16")  | 128.00mm<br>(5-1/32")   |                      |
| * DP33A-SSS   | 112.00mm<br>(4-13/32")  | 96.00mm<br>(3-25/32")   | 31.00mm<br>(1-7/32") |
| * DP33B-SSS   | 149.00mm<br>(5-7/8")    | 128.00mm<br>(5-1/32")   |                      |
| * DP33C-SSS   | 181.00mm<br>(7-1/8")    | 160.00mm<br>(6-5/16")   |                      |
| * DP33D-SSS   | 222.00mm<br>(8-3/4")    | 192.00mm<br>(7-9/16")   | 32.00mm<br>(1-1/4")  |
| ** DP33DE-SSS | 259.00mm<br>(10-3/16")  | 224.00mm<br>(8-13/16")  |                      |
| *** DP33E-SSS | 364.00mm<br>(14-11/32") | 320.00mm<br>(12-19/32") | 35.00mm<br>(1-3/8")  |

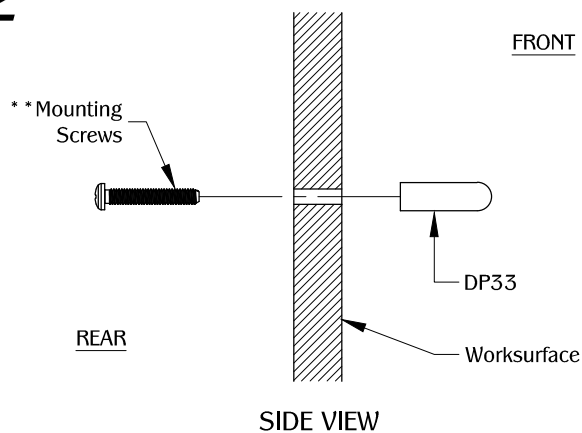
\* LENGTH TOLERANCE (+/-) 1.5mm (1/16")  
 \*\* LENGTH TOLERANCE (+/-) 2.00mm (3/32")  
 \*\*\* LENGTH TOLERANCE (+/-) 3.00mm (1/8")

1



Determine the position and location of the part in the work surface. Mark the mounting positions and drill the pilot holes for the mounting hardware.

2

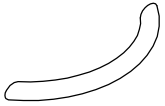



Use (2) screws to secure the part in to the work surface. Make sure the part is fully level on the work surface.

## NOTE:

- \* Other mounting screw lengths available upon request.
- All dimensions have a (+ / -) 1/32" tolerance unless otherwise specified. We do not recommend drilling or cutting any holes before receiving a product or a product sample.

## TABLE OF CONTENTS:

|   |  |
|---|--|
|   | .....1 X DP33                            |
|  | .....2 X 1" 4mm-70 thread Machine screws |