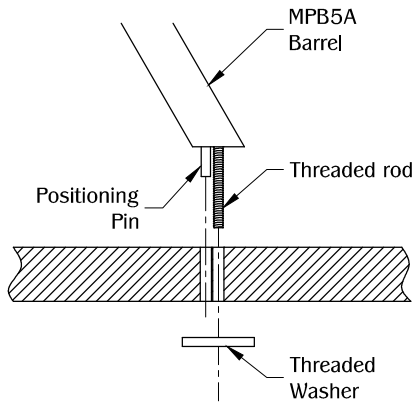


NOTE:

Weight Capacity: 15 lbs each
 Shelf Thickness: 1/4" MIN. to 3/4" MAX.
 Table Thickness: 7/8" MIN. - 1-3/4" MAX.

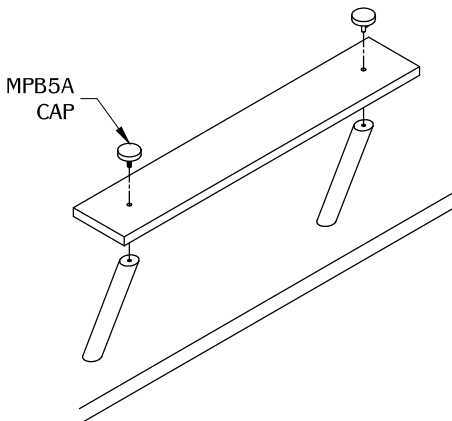
2

FRONT



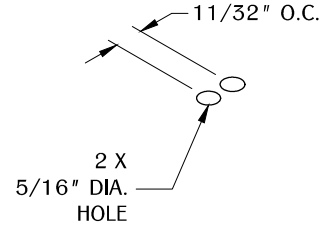
Install the threaded rod at the bottom of the MPB5A. Align the MPB5A to the predrilled holes. Secure the shelf support with the threaded washer.

4



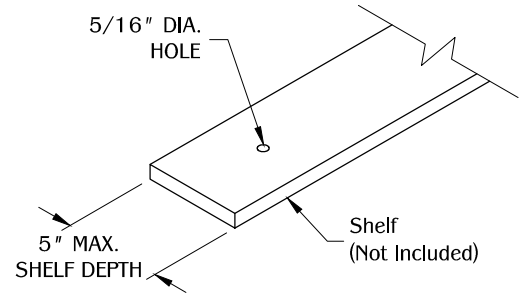
Align the drilled holes of the shelf to match the MPB5A barrel. Secure the shelf with MPB5A cap.

1







Drill two 5/16" diameter holes on the desired work surface for the positioning pin and the threaded screw.

3



Drill a 5/16" diameter hole on the shelf.

TABLE OF CONTENTS:

1 X MPB5A Barrel
1 X Threaded rod
1 X MPB5A Top
1 X Threaded Washer