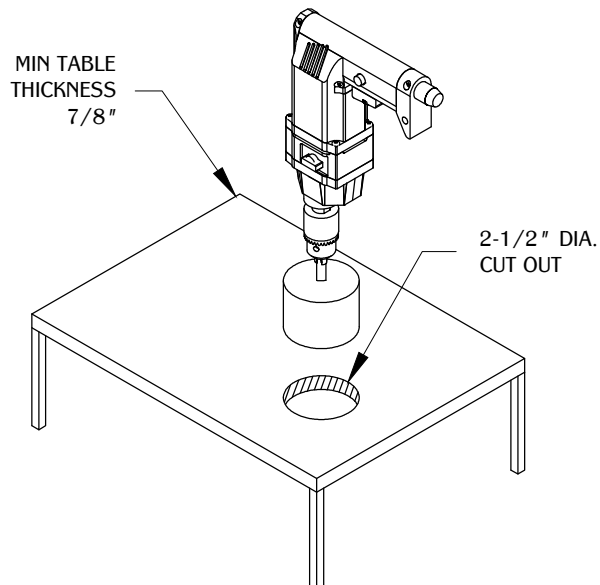
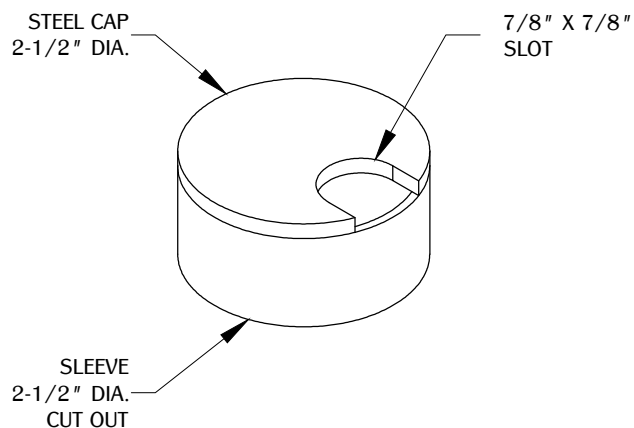
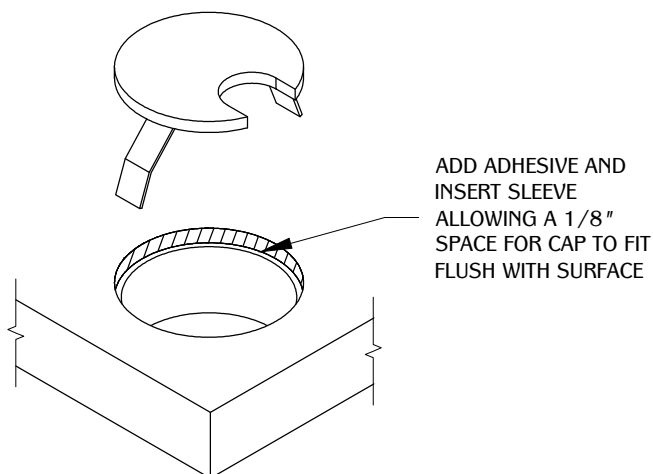


1

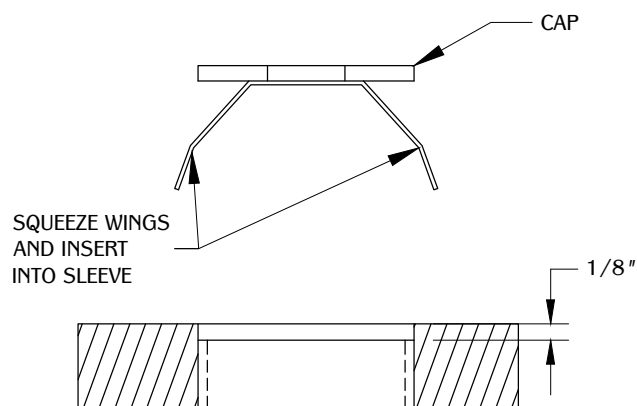


Make a cut out on the desired surface. (Note: We do not recommend cutting before receiving part or part sample.)

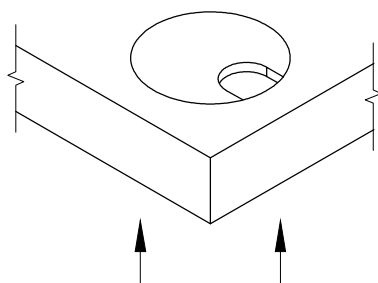
2



3

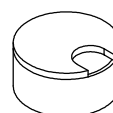


4



NOTE: IN ORDER TO REMOVE STEEL CAP
YOU WOULD NEED TO PUSH FROM THE
BOTTOM UP.

TABLE OF CONTENTS:



..... 1x PS2B