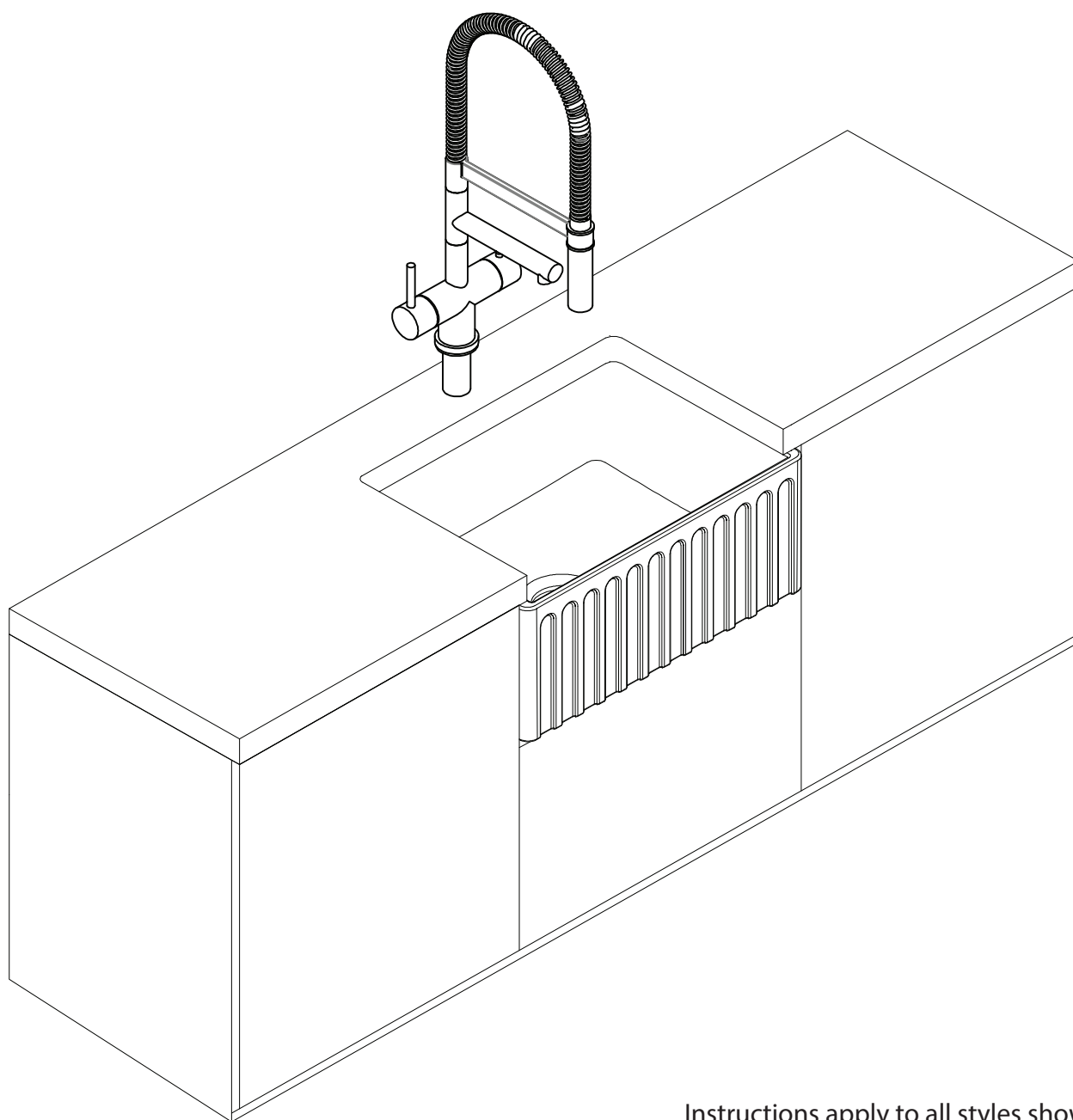


FIRECLAY KITCHEN SINK

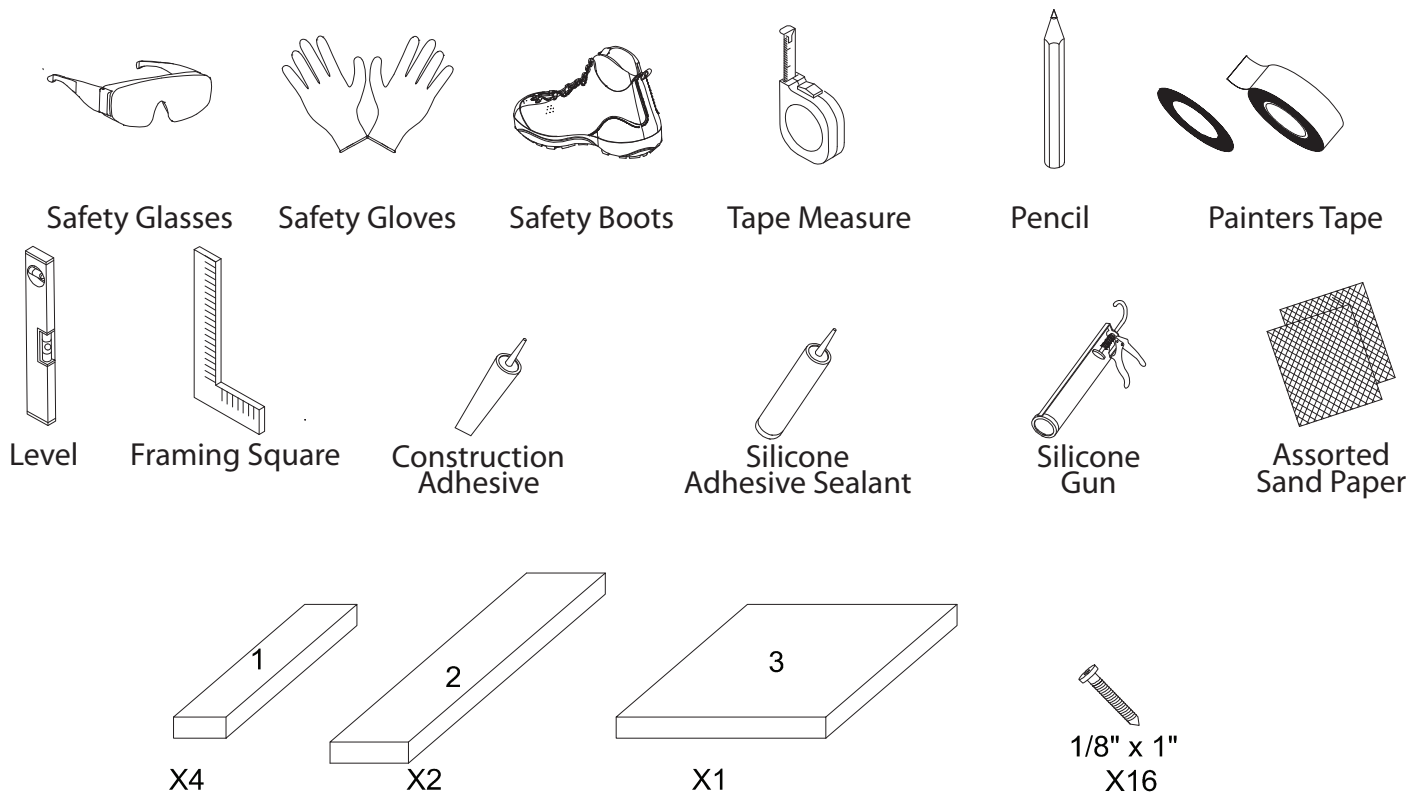
INSTALLATION INSTRUCTIONS



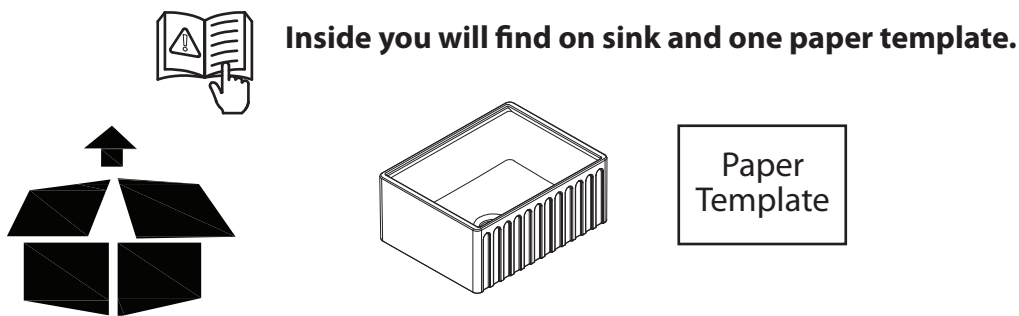
Instructions apply to all styles shown below.



Tools Needed for Installation



- Load bearing support framing material in various sizes and thicknesses
- Screws (please choose the desired length by checking the cabinet thickness)
- Please note that the tools and materials listed above are not included in the box, and must be provided separately



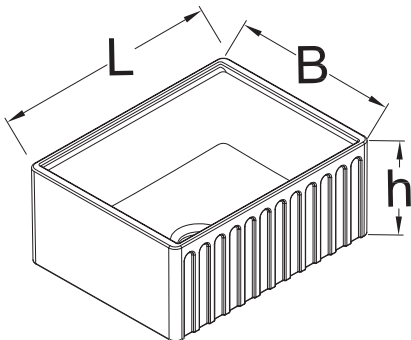
Prior to commencing this installation, please carefully review the instructions below.

- Handle with care and exercise caution to prevent personal injury or product damage, as the product may break, chip, or cause harm.
- Heavy item: team lift the sink with two or more individuals and use proper tools/materials, such safety gloves, googles and boots, during the installation of the product in order to avoid personal injury.
- Karran does not accept liability for any damage to the countertop, sink, faucets, floors, walls, or personal injury due to the improper installation.

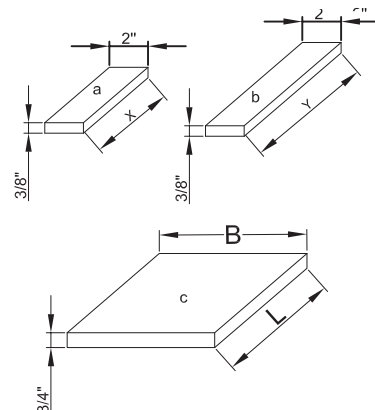
BEFORE INSTALLATION

- Prior to commencing this installation, please carefully review these instructions.
- Comply with any applicable local plumbing and building codes.
- Turn off both the hot and cold water supplies. Examine the drain, supply tubing, and faucets for any issues, and replace them if needed.
- Before starting, unbox the new sink and carefully check for any damage. Keep the sink in its protective carton until you're prepared to proceed with the installation.
- Karran strongly suggests that all sink installations be carried out by skilled professionals. We recommend consulting professionals if you are unfamiliar with installing kitchen fixtures and plumbing. Karran does not accept any liability for damage to countertop, sink, faucets, or personal injury due to improper installations
- This fireclay kitchen sink is a heavy product so for a secure and damage-free installation, it is recommended to have at two individuals install the sink.
- Ensure a proper installation by having a custom countertop, sink base cabinet, and supporting frame in place. Installer must provide all load bearing supports in accordance with installation instructions supplied with kitchen sink. Load bearing supports not included must be provided separately.
- To install this product, custom cabinetry is required. Karran advises engaging an experienced cabinet maker to construct a new cabinet or make necessary modifications to existing ones for this product.
- For safety purposes and to prevent any potential sink damage, we strongly advise building a support frame underneath sink that is capable of bearing a minimum load of 300 pounds. This load estimate accommodates the weight of an average fireclay sink filled to capacity and allows for additional stress caused by a waste disposer.
- Because this sink offers various installation possibilities, you have the option to utilize procedures different from those outlined in these instructions.
- A cut-out template is provided in the box in order to make the installation process easier. However, due to the manufacturing process of fireclay products there may be slight differences in size of the actual sink, so Karran strongly recommends that the installer review the measurements of the the actual sink itself and check with the template before starting the installation process.
- The cabinet and load bearing support frame displayed in these instructions are general examples and may not reflect your specific design or structure.
- The instructions provided are based on the most current product information available at the time of publication. Karran retains the right to make design revisions to their products without prior publication.

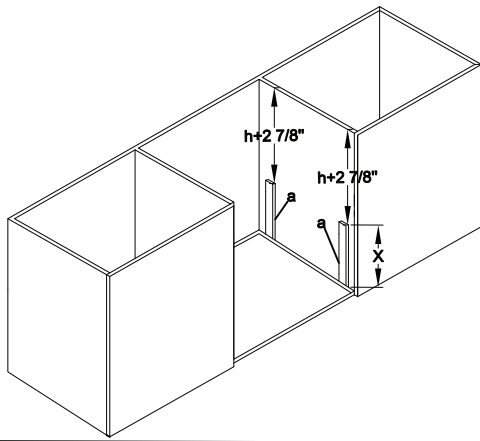
01



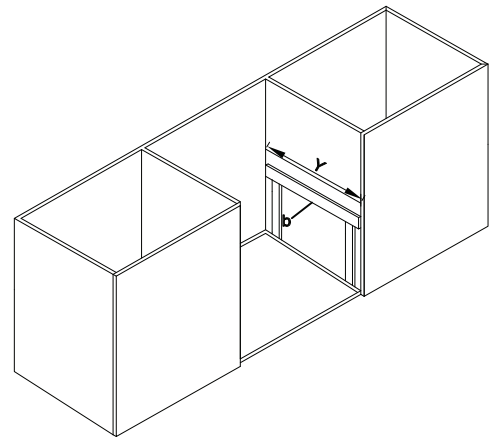
02



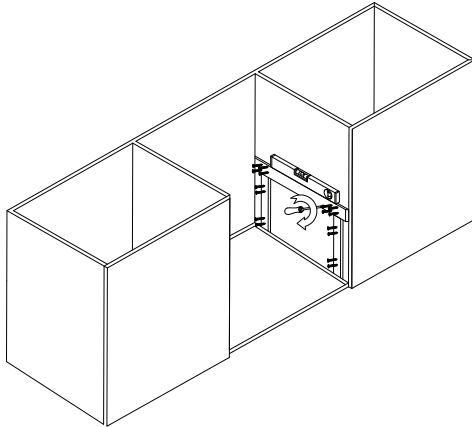
03



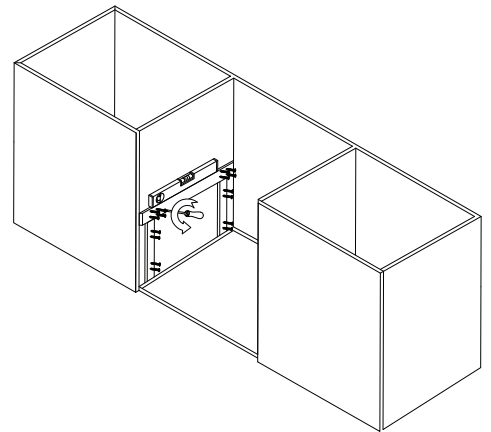
04



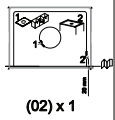
05



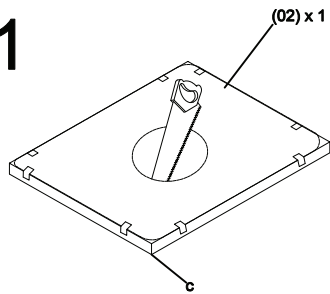
06



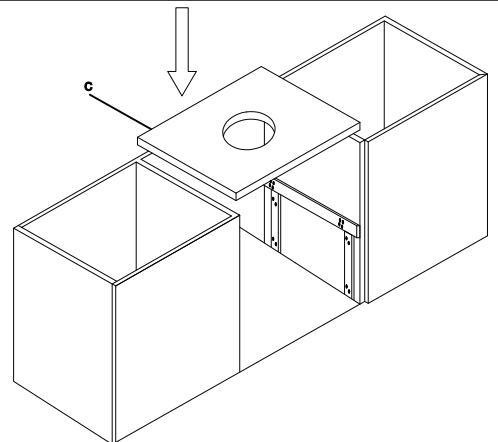
07



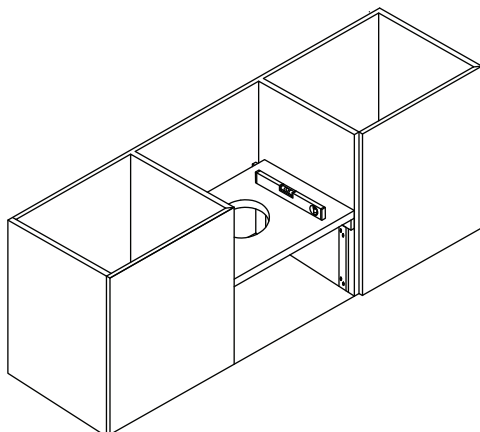
1



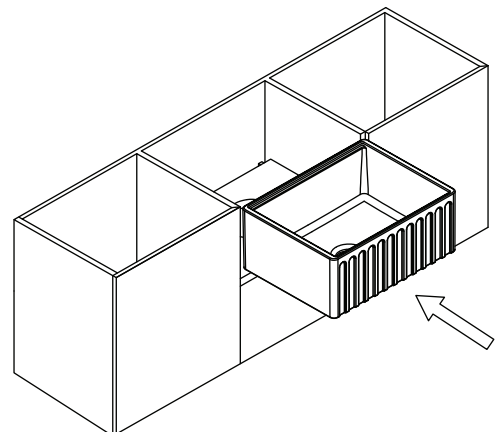
08



09

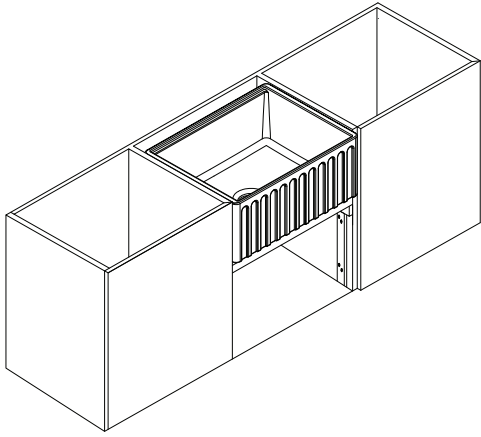


10

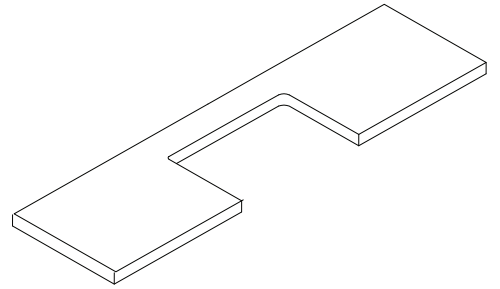


* Load bearing materials are not included in the box, and must be provided separately.

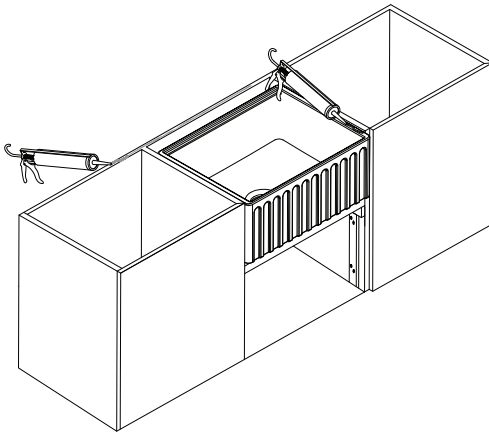
11



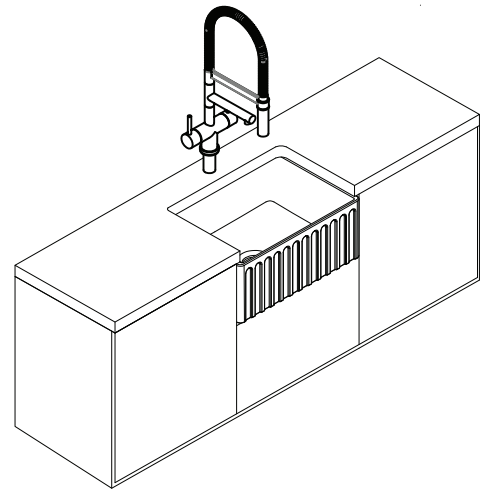
12



13



14



Thank you for choosing

Karran[®]
INSPIRED FOR LIVING

If you have any questions or concerns
please contact us:

email: info@karran.com

phone: (866) 452 7726