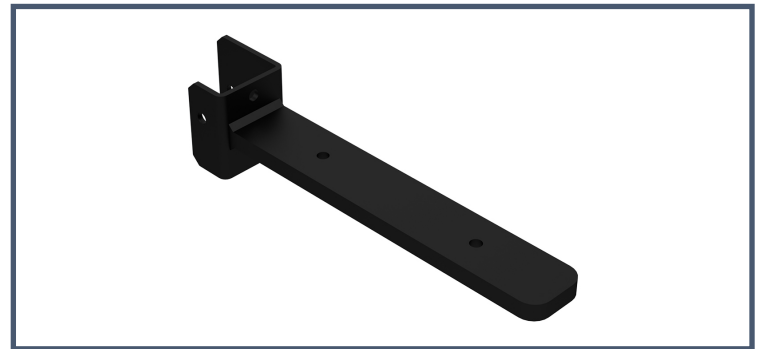




SKU	SIZE	FINISH
FB-10957	8 x 1.75 x 2	Black



Bracket Forward Flange Arm Size: 1.38" Width x 3/8" Plate Thickness x 8" Projection (mounting section fits standard 1.5" stud)

Finish: Black

Material Thickness: 11 Gauge Steel with 3/8" Thick Support Arm

Holes: 5 Mounting Holes Total (2 front, 2 left side, 1 right side) plus 2 Shelf Mounting Holes

Carry Capacity: Up to 150 Pounds Per Bracket

Sold as a Single Unit

Fasteners Not Included

