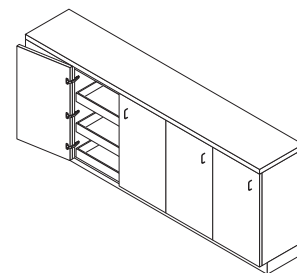


Tiomos 160

160° Wide angle hinge



- 3-dimensional adjustment with suitable base plate
- Accommodates overlays up to 25.4 mm (1")
- Soft-close or Self-close hinges available
- For face frame or frameless cabinets
- Convenient depth adjustment with worm gear
- Zero protrusion when door is opened 90°
- 10mm cup depth
- For door thicknesses up to 32 mm (1 1/4")
- Minimal reveal

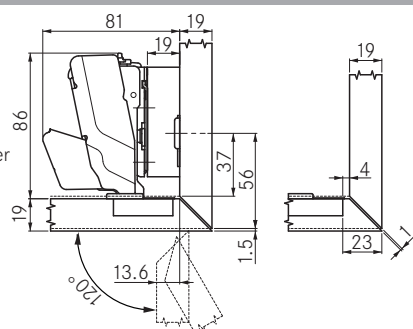


Tiomos 160 Opening Angle 160° Impresso Screw-on Dowelled

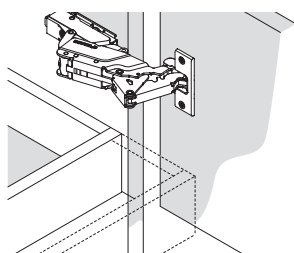
Full overlay	Cranking 00	Pattern	Type	Item No.	Pattern	Type	Item No.	Item No.	PU
	Hinge cup: steel, nickel-plated Hinge arm: steel, nickel-plated	42 / 45	Soft-close	F017139435217	45	Soft-close	F028138561217	F028138564217	50
			Self-close	F034139406217		Self-close	F045138499217	F045138502217	50
		42	Soft-close	-	Soft-close	-	F028138382217	50	
			Self-close	-	Self-close	-	F045138320217	50	
Overlay	Cranking 03	Pattern	Type	Item No.	Pattern	Type	Item No.	Item No.	PU
	Hinge cup: steel, nickel-plated Hinge arm: steel, nickel-plated	42 / 45	Soft-close	F017139436217	45	Soft-close	F028138562217	F028138565217	50
			Self-close	F034139407217		Self-close	F045138500217	F045138503217	50
		42	Soft-close	-	Soft-close	-	F028138383217	50	
			Self-close	-	Self-close	-	F045138321217	50	
Half overlay	Cranking 9.5	Pattern	Type	Item No.	Pattern	Type	Item No.	Item No.	PU
	Hinge cup: steel, nickel-plated Hinge arm: zinc, nickel-plated	42 / 45	Soft-close	F017139437217	45	Soft-close	F028138563217	F028138566217	50
			Self-close	F034139408217		Self-close	F045138501217	F045138504217	50
		42	Soft-close	-	Soft-close	-	F028138384217	50	
			Self-close	-	Self-close	-	F045138322217	50	

Mitered corner application

Use 120° opening angle reduction clip.
Prevents doors from bumping with the cabinet side in inset applications and mitered corner applications.



Zero door protrusion at 90°



Zero protrusion for application with inset drawers. With 00 cranking and 00 height of base plate the door is flush with the cabinet at 90°.

Hinge cup cover cap

Item No.	PU
Steel, nickel-plated F072135503228	150

Angle reduction clip to 120°

Item No.	PU
Plastic, black F072135753117	50

Wood screw, nickel-plated

Item No.	PU
#6 x 5/8" FHP, NI 81001-43	500

PU = packaging unit

Full overlay	Overlay	Half overlay	Inset																																																																																																																																																																																																																																																																																																																																																																																																																																																																																																																																																																																																																																																																																																																														
<p>64 [2 17/32"] 84.5 [3 5/16"] 37 [1 15/16"] DT 3.4 Reveal 13 [1/2"] Overlay CC BPH DD</p> <p>Drilling Distance (DD)</p> <table border="1"> <tr><th></th><th>3</th><th>4</th><th>5</th><th>6</th><th>7</th><th>8</th><th>9</th><th>10</th></tr> <tr><th>25.0</th><td></td><td></td><td></td><td></td><td></td><td></td><td></td><td>0</td></tr> <tr><th>24.0</th><td></td><td></td><td></td><td></td><td></td><td></td><td></td><td>0</td></tr> <tr><th>23.0</th><td></td><td></td><td></td><td></td><td></td><td></td><td>0</td><td>2</td></tr> <tr><th>22.0</th><td></td><td></td><td></td><td></td><td></td><td>0</td><td>2</td><td>3</td></tr> <tr><th>21.0</th><td></td><td></td><td></td><td>0</td><td>2</td><td>3</td><td></td><td></td></tr> <tr><th>20.0</th><td></td><td></td><td>0</td><td>2</td><td>3</td><td></td><td></td><td></td></tr> <tr><th>19.0</th><td></td><td>0</td><td>2</td><td>3</td><td></td><td></td><td></td><td></td></tr> <tr><th>18.5</th><td></td><td></td><td></td><td>3.5</td><td></td><td></td><td></td><td></td></tr> <tr><th>18.0</th><td>0</td><td>2</td><td>3</td><td></td><td></td><td></td><td></td><td></td></tr> <tr><th>17.5</th><td></td><td></td><td>3.5</td><td></td><td></td><td></td><td></td><td></td></tr> <tr><th>17.0</th><td></td><td>2</td><td>3</td><td></td><td></td><td></td><td></td><td></td></tr> <tr><th>16.5</th><td></td><td></td><td>3.5</td><td></td><td></td><td></td><td></td><td></td></tr> <tr><th>16.0</th><td>2</td><td>3</td><td></td><td></td><td></td><td></td><td></td><td></td></tr> <tr><th>15.5</th><td></td><td>3.5</td><td></td><td></td><td></td><td></td><td></td><td></td></tr> <tr><th>15.0</th><td>3</td><td></td><td></td><td></td><td></td><td></td><td></td><td></td></tr> <tr><th>14.5</th><td>3.5</td><td></td><td></td><td></td><td></td><td></td><td></td><td></td></tr> <tr><th>Door overlay</th><td></td><td></td><td></td><td></td><td></td><td></td><td></td><td></td></tr> <tr><td></td><td colspan="8">Base Plate Height (BPH)</td></tr> </table>		3	4	5	6	7	8	9	10	25.0								0	24.0								0	23.0							0	2	22.0						0	2	3	21.0				0	2	3			20.0			0	2	3				19.0		0	2	3					18.5				3.5					18.0	0	2	3						17.5			3.5						17.0		2	3						16.5			3.5						16.0	2	3							15.5		3.5							15.0	3								14.5	3.5								Door overlay										Base Plate Height (BPH)								<p>67 [2 5/8"] 84.5 [3 5/16"] 37 [1 15/16"] DT 10 [13/32"] 0.4 [1/64"] Reveal DD Overlay CC</p> <p>Drilling Distance (DD)</p> <table border="1"> <tr><th></th><th>3</th><th>4</th><th>5</th><th>6</th><th>7</th><th>8</th><th>9</th><th>10</th></tr> <tr><th>22.0</th><td></td><td></td><td></td><td></td><td></td><td></td><td></td><td>0</td></tr> <tr><th>21.0</th><td></td><td></td><td></td><td></td><td></td><td></td><td></td><td>0</td></tr> <tr><th>20.0</th><td></td><td></td><td></td><td></td><td></td><td></td><td>0</td><td>2</td></tr> <tr><th>19.0</th><td></td><td></td><td></td><td></td><td></td><td>0</td><td>2</td><td>3</td></tr> <tr><th>18.0</th><td></td><td></td><td></td><td>0</td><td>2</td><td>3</td><td></td><td></td></tr> <tr><th>17.0</th><td></td><td></td><td>0</td><td>2</td><td>3</td><td></td><td></td><td></td></tr> <tr><th>16.5</th><td></td><td></td><td></td><td></td><td>3.5</td><td></td><td></td><td></td></tr> <tr><th>16.0</th><td></td><td>0</td><td>2</td><td>3</td><td></td><td></td><td></td><td></td></tr> <tr><th>15.5</th><td></td><td></td><td></td><td>3.5</td><td></td><td></td><td></td><td></td></tr> <tr><th>15.0</th><td>0</td><td>2</td><td>3</td><td></td><td></td><td></td><td></td><td></td></tr> <tr><th>14.5</th><td></td><td></td><td>3.5</td><td></td><td></td><td></td><td></td><td></td></tr> <tr><th>14.0</th><td></td><td>2</td><td>3</td><td></td><td></td><td></td><td></td><td></td></tr> <tr><th>13.5</th><td></td><td></td><td>3.5</td><td></td><td></td><td></td><td></td><td></td></tr> <tr><th>13.0</th><td>2</td><td>3</td><td></td><td></td><td></td><td></td><td></td><td></td></tr> <tr><th>12.5</th><td></td><td>3.5</td><td></td><td></td><td></td><td></td><td></td><td></td></tr> <tr><th>12.0</th><td>3</td><td></td><td></td><td></td><td></td><td></td><td></td><td></td></tr> <tr><th>11.5</th><td>3.5</td><td></td><td></td><td></td><td></td><td></td><td></td><td></td></tr> <tr><th>Door overlay</th><td></td><td></td><td></td><td></td><td></td><td></td><td></td><td></td></tr> <tr><td></td><td colspan="8">Base Plate Height (BPH)</td></tr> </table>		3	4	5	6	7	8	9	10	22.0								0	21.0								0	20.0							0	2	19.0						0	2	3	18.0				0	2	3			17.0			0	2	3				16.5					3.5				16.0		0	2	3					15.5				3.5					15.0	0	2	3						14.5			3.5						14.0		2	3						13.5			3.5						13.0	2	3							12.5		3.5							12.0	3								11.5	3.5								Door overlay										Base Plate Height (BPH)								<p>73.5 [2 29/32"] 84.5 [3 5/16"] 37 [1 15/16"] DT 3.5 [1/8"] DD Overlay CC 2x R 6.1 [1/4"]</p> <p>Drilling Distance (DD)</p> <table border="1"> <tr><th></th><th>3</th><th>4</th><th>5</th><th>6</th><th>7</th><th>8</th><th>9</th><th>10</th></tr> <tr><th>15.5</th><td></td><td></td><td></td><td></td><td></td><td></td><td></td><td>0</td></tr> <tr><th>14.5</th><td></td><td></td><td></td><td></td><td></td><td></td><td></td><td>0</td></tr> <tr><th>13.5</th><td></td><td></td><td></td><td></td><td></td><td></td><td>0</td><td>2</td></tr> <tr><th>12.5</th><td></td><td></td><td></td><td></td><td></td><td>0</td><td>2</td><td>3</td></tr> <tr><th>11.5</th><td></td><td></td><td>0</td><td>2</td><td>3</td><td></td><td></td><td></td></tr> <tr><th>10.5</th><td></td><td></td><td>0</td><td>2</td><td>3</td><td></td><td></td><td></td></tr> <tr><th>10.0</th><td></td><td></td><td></td><td></td><td></td><td>3.5</td><td></td><td></td></tr> <tr><th>9.5</th><td></td><td>0</td><td>2</td><td>3</td><td></td><td></td><td></td><td></td></tr> <tr><th>9.0</th><td></td><td></td><td></td><td></td><td>3.5</td><td></td><td></td><td></td></tr> <tr><th>8.5</th><td>0</td><td>2</td><td>3</td><td></td><td></td><td></td><td></td><td></td></tr> <tr><th>8.0</th><td></td><td></td><td>3.5</td><td></td><td></td><td></td><td></td><td></td></tr> <tr><th>7.5</th><td></td><td>2</td><td>3</td><td></td><td></td><td></td><td></td><td></td></tr> <tr><th>7.0</th><td></td><td></td><td>3.5</td><td></td><td></td><td></td><td></td><td></td></tr> <tr><th>6.5</th><td>2</td><td>3</td><td></td><td></td><td></td><td></td><td></td><td></td></tr> <tr><th>6.0</th><td></td><td>3.5</td><td></td><td></td><td></td><td></td><td></td><td></td></tr> <tr><th>5.5</th><td>3</td><td></td><td></td><td></td><td></td><td></td><td></td><td></td></tr> <tr><th>5.0</th><td>3.5</td><td></td><td></td><td></td><td></td><td></td><td></td><td></td></tr> <tr><th>Door overlay</th><td></td><td></td><td></td><td></td><td></td><td></td><td></td><td></td></tr> <tr><td></td><td colspan="8">Base Plate Height (BPH)</td></tr> </table>		3	4	5	6	7	8	9	10	15.5								0	14.5								0	13.5							0	2	12.5						0	2	3	11.5			0	2	3				10.5			0	2	3				10.0						3.5			9.5		0	2	3					9.0					3.5				8.5	0	2	3						8.0			3.5						7.5		2	3						7.0			3.5						6.5	2	3							6.0		3.5							5.5	3								5.0	3.5								Door overlay										Base Plate Height (BPH)								<p>83 [3 9/32"] 19 [3/4"] 86 [3 3/8"] DT 15.6 [5/8"] 6 [1/4"] DD R CC X</p> <p>Drawing shows Tiomos with a cranking 03 hinge, Base Plate Height (BPH) 19 X = 38.5 + DT</p> <p>Drilling Distance (DD)</p> <table border="1"> <tr><th></th><th>3</th><th>4</th><th>5</th><th>6</th><th>7</th><th>8</th><th>9</th><th>10</th></tr> <tr><th>25.0</th><td></td><td></td><td></td><td></td><td></td><td></td><td></td><td>0</td></tr> <tr><th>24.0</th><td></td><td></td><td></td><td></td><td></td><td></td><td></td><td>0</td></tr> <tr><th>23.0</th><td></td><td></td><td></td><td></td><td></td><td></td><td>0</td><td>2</td></tr> <tr><th>22.0</th><td></td><td></td><td></td><td></td><td></td><td>0</td><td>2</td><td>3</td></tr> <tr><th>21.0</th><td></td><td></td><td></td><td>0</td><td>2</td><td>3</td><td></td><td></td></tr> <tr><th>20.0</th><td></td><td></td><td>0</td><td>2</td><td>3</td><td></td><td></td><td></td></tr> <tr><th>19.0</th><td></td><td>0</td><td>2</td><td>3</td><td></td><td></td><td></td><td></td></tr> <tr><th>18.5</th><td></td><td></td><td></td><td>3.5</td><td></td><td></td><td></td><td></td></tr> <tr><th>18.0</th><td>0</td><td>2</td><td>3</td><td></td><td></td><td></td><td></td><td></td></tr> <tr><th>17.5</th><td></td><td></td><td>3.5</td><td></td><td></td><td></td><td></td><td></td></tr> <tr><th>17.0</th><td></td><td>2</td><td>3</td><td></td><td></td><td></td><td></td><td></td></tr> <tr><th>16.5</th><td></td><td></td><td>3.5</td><td></td><td></td><td></td><td></td><td></td></tr> <tr><th>16.0</th><td>2</td><td>3</td><td></td><td></td><td></td><td></td><td></td><td></td></tr> <tr><th>15.5</th><td></td><td>3.5</td><td></td><td></td><td></td><td></td><td></td><td></td></tr> <tr><th>15.0</th><td>3</td><td></td><td></td><td></td><td></td><td></td><td></td><td></td></tr> <tr><th>14.5</th><td>3.5</td><td></td><td></td><td></td><td></td><td></td><td></td><td></td></tr> <tr><th>Reveal (R)</th><td></td><td></td><td></td><td></td><td></td><td></td><td></td><td></td></tr> <tr><td></td><td colspan="8">Base Plate Height (BPH)</td></tr> </table>		3	4	5	6	7	8	9	10	25.0								0	24.0								0	23.0							0	2	22.0						0	2	3	21.0				0	2	3			20.0			0	2	3				19.0		0	2	3					18.5				3.5					18.0	0	2	3						17.5			3.5						17.0		2	3						16.5			3.5						16.0	2	3							15.5		3.5							15.0	3								14.5	3.5								Reveal (R)										Base Plate Height (BPH)							
	3	4	5	6	7	8	9	10																																																																																																																																																																																																																																																																																																																																																																																																																																																																																																																																																																																																																																																																																																																									
25.0								0																																																																																																																																																																																																																																																																																																																																																																																																																																																																																																																																																																																																																																																																																																																									
24.0								0																																																																																																																																																																																																																																																																																																																																																																																																																																																																																																																																																																																																																																																																																																																									
23.0							0	2																																																																																																																																																																																																																																																																																																																																																																																																																																																																																																																																																																																																																																																																																																																									
22.0						0	2	3																																																																																																																																																																																																																																																																																																																																																																																																																																																																																																																																																																																																																																																																																																																									
21.0				0	2	3																																																																																																																																																																																																																																																																																																																																																																																																																																																																																																																																																																																																																																																																																																																											
20.0			0	2	3																																																																																																																																																																																																																																																																																																																																																																																																																																																																																																																																																																																																																																																																																																																												
19.0		0	2	3																																																																																																																																																																																																																																																																																																																																																																																																																																																																																																																																																																																																																																																																																																																													
18.5				3.5																																																																																																																																																																																																																																																																																																																																																																																																																																																																																																																																																																																																																																																																																																																													
18.0	0	2	3																																																																																																																																																																																																																																																																																																																																																																																																																																																																																																																																																																																																																																																																																																																														
17.5			3.5																																																																																																																																																																																																																																																																																																																																																																																																																																																																																																																																																																																																																																																																																																																														
17.0		2	3																																																																																																																																																																																																																																																																																																																																																																																																																																																																																																																																																																																																																																																																																																																														
16.5			3.5																																																																																																																																																																																																																																																																																																																																																																																																																																																																																																																																																																																																																																																																																																																														
16.0	2	3																																																																																																																																																																																																																																																																																																																																																																																																																																																																																																																																																																																																																																																																																																																															
15.5		3.5																																																																																																																																																																																																																																																																																																																																																																																																																																																																																																																																																																																																																																																																																																																															
15.0	3																																																																																																																																																																																																																																																																																																																																																																																																																																																																																																																																																																																																																																																																																																																																
14.5	3.5																																																																																																																																																																																																																																																																																																																																																																																																																																																																																																																																																																																																																																																																																																																																
Door overlay																																																																																																																																																																																																																																																																																																																																																																																																																																																																																																																																																																																																																																																																																																																																	
	Base Plate Height (BPH)																																																																																																																																																																																																																																																																																																																																																																																																																																																																																																																																																																																																																																																																																																																																
	3	4	5	6	7	8	9	10																																																																																																																																																																																																																																																																																																																																																																																																																																																																																																																																																																																																																																																																																																																									
22.0								0																																																																																																																																																																																																																																																																																																																																																																																																																																																																																																																																																																																																																																																																																																																									
21.0								0																																																																																																																																																																																																																																																																																																																																																																																																																																																																																																																																																																																																																																																																																																																									
20.0							0	2																																																																																																																																																																																																																																																																																																																																																																																																																																																																																																																																																																																																																																																																																																																									
19.0						0	2	3																																																																																																																																																																																																																																																																																																																																																																																																																																																																																																																																																																																																																																																																																																																									
18.0				0	2	3																																																																																																																																																																																																																																																																																																																																																																																																																																																																																																																																																																																																																																																																																																																											
17.0			0	2	3																																																																																																																																																																																																																																																																																																																																																																																																																																																																																																																																																																																																																																																																																																																												
16.5					3.5																																																																																																																																																																																																																																																																																																																																																																																																																																																																																																																																																																																																																																																																																																																												
16.0		0	2	3																																																																																																																																																																																																																																																																																																																																																																																																																																																																																																																																																																																																																																																																																																																													
15.5				3.5																																																																																																																																																																																																																																																																																																																																																																																																																																																																																																																																																																																																																																																																																																																													
15.0	0	2	3																																																																																																																																																																																																																																																																																																																																																																																																																																																																																																																																																																																																																																																																																																																														
14.5			3.5																																																																																																																																																																																																																																																																																																																																																																																																																																																																																																																																																																																																																																																																																																																														
14.0		2	3																																																																																																																																																																																																																																																																																																																																																																																																																																																																																																																																																																																																																																																																																																																														
13.5			3.5																																																																																																																																																																																																																																																																																																																																																																																																																																																																																																																																																																																																																																																																																																																														
13.0	2	3																																																																																																																																																																																																																																																																																																																																																																																																																																																																																																																																																																																																																																																																																																																															
12.5		3.5																																																																																																																																																																																																																																																																																																																																																																																																																																																																																																																																																																																																																																																																																																																															
12.0	3																																																																																																																																																																																																																																																																																																																																																																																																																																																																																																																																																																																																																																																																																																																																
11.5	3.5																																																																																																																																																																																																																																																																																																																																																																																																																																																																																																																																																																																																																																																																																																																																
Door overlay																																																																																																																																																																																																																																																																																																																																																																																																																																																																																																																																																																																																																																																																																																																																	
	Base Plate Height (BPH)																																																																																																																																																																																																																																																																																																																																																																																																																																																																																																																																																																																																																																																																																																																																
	3	4	5	6	7	8	9	10																																																																																																																																																																																																																																																																																																																																																																																																																																																																																																																																																																																																																																																																																																																									
15.5								0																																																																																																																																																																																																																																																																																																																																																																																																																																																																																																																																																																																																																																																																																																																									
14.5								0																																																																																																																																																																																																																																																																																																																																																																																																																																																																																																																																																																																																																																																																																																																									
13.5							0	2																																																																																																																																																																																																																																																																																																																																																																																																																																																																																																																																																																																																																																																																																																																									
12.5						0	2	3																																																																																																																																																																																																																																																																																																																																																																																																																																																																																																																																																																																																																																																																																																																									
11.5			0	2	3																																																																																																																																																																																																																																																																																																																																																																																																																																																																																																																																																																																																																																																																																																																												
10.5			0	2	3																																																																																																																																																																																																																																																																																																																																																																																																																																																																																																																																																																																																																																																																																																																												
10.0						3.5																																																																																																																																																																																																																																																																																																																																																																																																																																																																																																																																																																																																																																																																																																																											
9.5		0	2	3																																																																																																																																																																																																																																																																																																																																																																																																																																																																																																																																																																																																																																																																																																																													
9.0					3.5																																																																																																																																																																																																																																																																																																																																																																																																																																																																																																																																																																																																																																																																																																																												
8.5	0	2	3																																																																																																																																																																																																																																																																																																																																																																																																																																																																																																																																																																																																																																																																																																																														
8.0			3.5																																																																																																																																																																																																																																																																																																																																																																																																																																																																																																																																																																																																																																																																																																																														
7.5		2	3																																																																																																																																																																																																																																																																																																																																																																																																																																																																																																																																																																																																																																																																																																																														
7.0			3.5																																																																																																																																																																																																																																																																																																																																																																																																																																																																																																																																																																																																																																																																																																																														
6.5	2	3																																																																																																																																																																																																																																																																																																																																																																																																																																																																																																																																																																																																																																																																																																																															
6.0		3.5																																																																																																																																																																																																																																																																																																																																																																																																																																																																																																																																																																																																																																																																																																																															
5.5	3																																																																																																																																																																																																																																																																																																																																																																																																																																																																																																																																																																																																																																																																																																																																
5.0	3.5																																																																																																																																																																																																																																																																																																																																																																																																																																																																																																																																																																																																																																																																																																																																
Door overlay																																																																																																																																																																																																																																																																																																																																																																																																																																																																																																																																																																																																																																																																																																																																	
	Base Plate Height (BPH)																																																																																																																																																																																																																																																																																																																																																																																																																																																																																																																																																																																																																																																																																																																																
	3	4	5	6	7	8	9	10																																																																																																																																																																																																																																																																																																																																																																																																																																																																																																																																																																																																																																																																																																																									
25.0								0																																																																																																																																																																																																																																																																																																																																																																																																																																																																																																																																																																																																																																																																																																																									
24.0								0																																																																																																																																																																																																																																																																																																																																																																																																																																																																																																																																																																																																																																																																																																																									
23.0							0	2																																																																																																																																																																																																																																																																																																																																																																																																																																																																																																																																																																																																																																																																																																																									
22.0						0	2	3																																																																																																																																																																																																																																																																																																																																																																																																																																																																																																																																																																																																																																																																																																																									
21.0				0	2	3																																																																																																																																																																																																																																																																																																																																																																																																																																																																																																																																																																																																																																																																																																																											
20.0			0	2	3																																																																																																																																																																																																																																																																																																																																																																																																																																																																																																																																																																																																																																																																																																																												
19.0		0	2	3																																																																																																																																																																																																																																																																																																																																																																																																																																																																																																																																																																																																																																																																																																																													
18.5				3.5																																																																																																																																																																																																																																																																																																																																																																																																																																																																																																																																																																																																																																																																																																																													
18.0	0	2	3																																																																																																																																																																																																																																																																																																																																																																																																																																																																																																																																																																																																																																																																																																																														
17.5			3.5																																																																																																																																																																																																																																																																																																																																																																																																																																																																																																																																																																																																																																																																																																																														
17.0		2	3																																																																																																																																																																																																																																																																																																																																																																																																																																																																																																																																																																																																																																																																																																																														
16.5			3.5																																																																																																																																																																																																																																																																																																																																																																																																																																																																																																																																																																																																																																																																																																																														
16.0	2	3																																																																																																																																																																																																																																																																																																																																																																																																																																																																																																																																																																																																																																																																																																																															
15.5		3.5																																																																																																																																																																																																																																																																																																																																																																																																																																																																																																																																																																																																																																																																																																																															
15.0	3																																																																																																																																																																																																																																																																																																																																																																																																																																																																																																																																																																																																																																																																																																																																
14.5	3.5																																																																																																																																																																																																																																																																																																																																																																																																																																																																																																																																																																																																																																																																																																																																
Reveal (R)																																																																																																																																																																																																																																																																																																																																																																																																																																																																																																																																																																																																																																																																																																																																	
	Base Plate Height (BPH)																																																																																																																																																																																																																																																																																																																																																																																																																																																																																																																																																																																																																																																																																																																																

Ejemplo:
Si quiero que la puerta monte 10mm la única opción es barrenar a 8mm y usar placa 3.5

Minimum gaps	Drilling Distance (DD)	Reveal	Drilling Distance (DD)																																																																																																																																																																																																																																																																																																
<p>The minimum gap is the gap between the closed door and the front of the cabinet.</p> <p>*only achievable with 120° angle reduction clip</p>	<table border="1"> <tr><th></th><th>3</th><th>4</th><th>5</th><th>6</th><th>7</th><th>8</th><th>9</th><th>10</th></tr> <tr><th>32.0</th><td>1.0</td><td>1.0</td><td></td><td></td><td></td><td></td><td></td><td></td></tr> <tr><th>31.0</th><td>1.0</td><td>1.0</td><td>1.0</td><td></td><td></td><td></td><td></td><td></td></tr> <tr><th>30.0</th><td>1.0</td><td>1.0</td><td>1.0</td><td></td><td></td><td></td><td></td><td></td></tr> <tr><th>29.0</th><td>1.0</td><td>1.0</td><td>1.0</td><td>1.0</td><td>1.0</td><td>1.0</td><td>1.0</td><td>1.0</td></tr> <tr><th>28.0</th><td>1.0</td><td>1.0</td><td>1.0</td><td>1.0</td><td>1.0</td><td>1.0</td><td>1.0</td><td>1.0</td></tr> <tr><th>26.0</th><td>1.0</td><td>1.0</td><td>1.0</td><td>1.0</td><td>1.0</td><td>1.0</td><td>1.0</td><td>1.0</td></tr> <tr><th>25.0</th><td>1.0</td><td>1.0</td><td>1.0</td><td>1.0</td><td>1.0</td><td>1.0</td><td>1.0</td><td>1.0</td></tr> <tr><th>24.0</th><td>1.0</td><td>1.0</td><td>1.0</td><td>1.0</td><td>1.0</td><td>1.0</td><td>1.0</td><td>1.0</td></tr> <tr><th>22.0</th><td>1.0</td><td>1.0</td><td>1.0</td><td>1.0</td><td>1.0</td><td>1.0</td><td>1.0</td><td>1.0</td></tr> <tr><th>21.0</th><td>1.0</td><td>1.0</td><td>1.0</td><td>1.0</td><td>1.0</td><td>1.0</td><td>1.0</td><td>1.0</td></tr> <tr><th>20.0</th><td>1.0</td><td>1.0</td><td>1.0</td><td>1.0</td><td>1.0</td><td>1.0</td><td>1.0</td><td>1.0</td></tr> <tr><th>18.0</th><td>1.0</td><td>1.0</td><td>1.0</td><td>1.0</td><td>1.0</td><td>1.0</td><td>1.0</td><td>1.0</td></tr> <tr><th>16.0</th><td>1.0</td><td>1.0</td><td>1.0</td><td>1.0</td><td>1.0</td><td>1.0</td><td>1.0</td><td>1.0</td></tr> <tr><th>Door Thickness</th><td></td><td></td><td></td><td></td><td></td><td></td><td></td><td></td></tr> <tr><td></td><td colspan="8">Minimum gap</td></tr> </table>		3	4	5	6	7	8	9	10	32.0	1.0	1.0							31.0	1.0	1.0	1.0						30.0	1.0	1.0	1.0						29.0	1.0	1.0	1.0	1.0	1.0	1.0	1.0	1.0	28.0	1.0	1.0	1.0	1.0	1.0	1.0	1.0	1.0	26.0	1.0	1.0	1.0	1.0	1.0	1.0	1.0	1.0	25.0	1.0	1.0	1.0	1.0	1.0	1.0	1.0	1.0	24.0	1.0	1.0	1.0	1.0	1.0	1.0	1.0	1.0	22.0	1.0	1.0	1.0	1.0	1.0	1.0	1.0	1.0	21.0	1.0	1.0	1.0	1.0	1.0	1.0	1.0	1.0	20.0	1.0	1.0	1.0	1.0	1.0	1.0	1.0	1.0	18.0	1.0	1.0	1.0	1.0	1.0	1.0	1.0	1.0	16.0	1.0	1.0	1.0	1.0	1.0	1.0	1.0	1.0	Door Thickness										Minimum gap								<p>Reveal dimensions were determined with an edge radius (of the door) of 1mm! Hinge dimensions and reveal calculation based on factory setting.</p> <p>IMPORTANT To determine the correct application Grass strongly recommends a trial mounting for all hinges and base plates.</p>	<table border="1"> <tr><th></th><th>3</th><th>4</th><th>5</th><th>6</th><th>7</th><th>8</th><th>9</th><th>10</th></tr> <tr><th>32.0</th><td>0.2*</td><td>0.2*</td><td></td><td></td><td></td><td></td><td></td><td></td></tr> <tr><th>31.0</th><td>0.2*</td><td>0.2*</td><td>0.2*</td><td>0.2*</td><td></td><td></td><td></td><td></td></tr> <tr><th>30.0</th><td>0.2</td><td>0.2</td><td>0.2*</td><td>0.2*</td><td>0.2*</td><td></td><td></td><td></td></tr> <tr><th>29.0</th><td>0.2</td><td>0.2</td><td>0.2</td><td>0.2</td><td>0.2</td><td>0.2*</td><td>0.2*</td><td></td></tr> <tr><th>28.0</th><td>0.0</td><td>0.0</td><td>0.0</td><td>0.0</td><td>0.0</td><td>0.0</td><td>0.0</td><td>0.0</td></tr> <tr><th>26.0</th><td>0.0</td><td>0.0</td><td>0.0</td><td>0.0</td><td>0.0</td><td>0.0</td><td>0.0</td><td>0.0</td></tr> <tr><th>25.0</th><td>0.0</td><td>0.0</td><td>0.0</td><td>0.0</td><td>0.0</td><td>0.0</td><td>0.0</td><td>0.0</td></tr> <tr><th>24.0</th><td>0.0</td><td>0.0</td><td>0.0</td><td>0.0</td><td>0.0</td><td>0.0</td><td>0.0</td><td>0.0</td></tr> <tr><th>22.0</th><td>0.0</td><td>0.0</td><td>0.0</td><td>0.0</td><td>0.0</td><td>0.0</td><td>0.0</td><td>0.0</td></tr> <tr><th>21.0</th><td>0.0</td><td>0.0</td><td>0.0</td><td>0.0</td><td>0.0</td><td>0.0</td><td>0.0</td><td>0.0</td></tr> <tr><th>20.0</th><td>0.0</td><td>0.0</td><td>0.0</td><td>0.0</td><td>0.0</td><td>0.0</td><td>0.0</td><td>0.0</td></tr> <tr><th>18.0</th><td>0.0</td><td>0.0</td><td>0.0</td><td>0.0</td><td>0.0</td><td>0.0</td><td>0.0</td><td>0.0</td></tr> <tr><th>16.0</th><td>0.0</td><td>0.0</td><td>0.0</td><td>0.0</td><td>0.0</td><td>0.0</td><td>0.0</td><td>0.0</td></tr> <tr><th>Door Thickness</th><td></td><td></td><td></td><td></td><td></td><td></td><td></td><td></td></tr> <tr><td></td><td colspan="8">Reveal (R)</td></tr> </table>		3	4	5	6	7	8	9	10	32.0	0.2*	0.2*							31.0	0.2*	0.2*	0.2*	0.2*					30.0	0.2	0.2	0.2*	0.2*	0.2*				29.0	0.2	0.2	0.2	0.2	0.2	0.2*	0.2*		28.0	0.0	0.0	0.0	0.0	0.0	0.0	0.0	0.0	26.0	0.0	0.0	0.0	0.0	0.0	0.0	0.0	0.0	25.0	0.0	0.0	0.0	0.0	0.0	0.0	0.0	0.0	24.0	0.0	0.0	0.0	0.0	0.0	0.0	0.0	0.0	22.0	0.0	0.0	0.0	0.0	0.0	0.0	0.0	0.0	21.0	0.0	0.0	0.0	0.0	0.0	0.0	0.0	0.0	20.0	0.0	0.0	0.0	0.0	0.0	0.0	0.0	0.0	18.0	0.0	0.0	0.0	0.0	0.0	0.0	0.0	0.0	16.0	0.0	0.0	0.0	0.0	0.0	0.0	0.0	0.0	Door Thickness										Reveal (R)							
	3	4	5	6	7	8	9	10																																																																																																																																																																																																																																																																																											
32.0	1.0	1.0																																																																																																																																																																																																																																																																																																	
31.0	1.0	1.0	1.0																																																																																																																																																																																																																																																																																																
30.0	1.0	1.0	1.0																																																																																																																																																																																																																																																																																																
29.0	1.0	1.0	1.0	1.0	1.0	1.0	1.0	1.0																																																																																																																																																																																																																																																																																											
28.0	1.0	1.0	1.0	1.0	1.0	1.0	1.0	1.0																																																																																																																																																																																																																																																																																											
26.0	1.0	1.0	1.0	1.0	1.0	1.0	1.0	1.0																																																																																																																																																																																																																																																																																											
25.0	1.0	1.0	1.0	1.0	1.0	1.0	1.0	1.0																																																																																																																																																																																																																																																																																											
24.0	1.0	1.0	1.0	1.0	1.0	1.0	1.0	1.0																																																																																																																																																																																																																																																																																											
22.0	1.0	1.0	1.0	1.0	1.0	1.0	1.0	1.0																																																																																																																																																																																																																																																																																											
21.0	1.0	1.0	1.0	1.0	1.0	1.0	1.0	1.0																																																																																																																																																																																																																																																																																											
20.0	1.0	1.0	1.0	1.0	1.0	1.0	1.0	1.0																																																																																																																																																																																																																																																																																											
18.0	1.0	1.0	1.0	1.0	1.0	1.0	1.0	1.0																																																																																																																																																																																																																																																																																											
16.0	1.0	1.0	1.0	1.0	1.0	1.0	1.0	1.0																																																																																																																																																																																																																																																																																											
Door Thickness																																																																																																																																																																																																																																																																																																			
	Minimum gap																																																																																																																																																																																																																																																																																																		
	3	4	5	6	7	8	9	10																																																																																																																																																																																																																																																																																											
32.0	0.2*	0.2*																																																																																																																																																																																																																																																																																																	
31.0	0.2*	0.2*	0.2*	0.2*																																																																																																																																																																																																																																																																																															
30.0	0.2	0.2	0.2*	0.2*	0.2*																																																																																																																																																																																																																																																																																														
29.0	0.2	0.2	0.2	0.2	0.2	0.2*	0.2*																																																																																																																																																																																																																																																																																												
28.0	0.0	0.0	0.0	0.0	0.0	0.0	0.0	0.0																																																																																																																																																																																																																																																																																											
26.0	0.0	0.0	0.0	0.0	0.0	0.0	0.0	0.0																																																																																																																																																																																																																																																																																											
25.0	0.0	0.0	0.0	0.0	0.0	0.0	0.0	0.0																																																																																																																																																																																																																																																																																											
24.0	0.0	0.0	0.0	0.0	0.0	0.0	0.0	0.0																																																																																																																																																																																																																																																																																											
22.0	0.0	0.0	0.0	0.0	0.0	0.0	0.0	0.0																																																																																																																																																																																																																																																																																											
21.0	0.0	0.0	0.0	0.0	0.0	0.0	0.0	0.0																																																																																																																																																																																																																																																																																											
20.0	0.0	0.0	0.0	0.0	0.0	0.0	0.0	0.0																																																																																																																																																																																																																																																																																											
18.0	0.0	0.0	0.0	0.0	0.0	0.0	0.0	0.0																																																																																																																																																																																																																																																																																											
16.0	0.0	0.0	0.0	0.0	0.0	0.0	0.0	0.0																																																																																																																																																																																																																																																																																											
Door Thickness																																																																																																																																																																																																																																																																																																			
	Reveal (R)																																																																																																																																																																																																																																																																																																		

Screw-on	Impresso and Dowelled	Cup dimensions
<p>35^{+0.1} 45 9.5</p>	<p>35^{+0.1} 42 45 8 1.1 9.5</p>	<p>39 (40.5) min. 12.6 3 (8) () Impresso</p>