



DSCCK-20



T-LOC Drywall-Steel Conversion Kit Installation Instructions

Tools Needed

| | |
|--------------------|--------------------|
| Impact driver | 1/2" drill bit |
| T30 torx drive bit | 1/4" drill bit |
| Drill | 3/16" Allen wrench |

Parts Included

| | |
|-------------------|-----------------------------|
| [1] Drywall plate | [1] 5/8" pan head bolt |
| [1] SnapToggle | [1] 1" socket head bolt |
| [1] 1.75" bolt | [1] self-tapping trim screw |

Installation Instructions

Drywall Instructions

Step 1: Pre-drill the top hole using a drill and a 1/4" bit, drilling through the center of the top dot on the mounting template. Finish the hole with a 1/2" bit.

Step 2: Insert the SnapToggle into the hole, orienting it vertically. Tighten the center retainer and snap off the plastic legs.

Step 3: Thread the 5/8" pan head bolt into the lower drywall plate hole.

Step 4: Slide the baseplate over the bolt head.

Step 5: Align the upper drywall plate hole with the upper hole on the base plate. Slide the 1.75" bolt through both holes. Thread the bolt into the SnapToggle and tighten with an impact with a T30 bit. **Do not overtighten.**

After the base plate is installed, resume wood stud instructions at Step 7.

Steel Stud Instructions

Step 1: Pre-drill the top hole using a drill and a 1/4" bit, drilling through the center of the top dot on the mounting template and through the stud. Finish the hole with a 1/2" bit. Drill the bottom hole with a 1/2" drill bit, drilling to (but not through) the stud.

Step 2: Insert the SnapToggle into the hole, orienting it vertically. Tighten the center retainer and snap off the plastic legs.

Step 3: Thread the 1" socket head bolt into the lower drywall plate hole.

Step 4: Slide the baseplate over the bolt head.

Step 5: Align the upper drywall plate hole with the upper hole on the base plate. Slide the 1.75" bolt through both holes. Thread the bolt into the SnapToggle and tighten with an impact with a T30 bit. **Do not overtighten.**

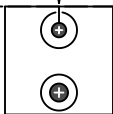
After the base plate is installed, resume wood stud instructions at Step 7.



Discover more products by visiting us online.
Just scan this **QR code** or visit **www.innovashelf.com**
to find inspiration photos, bracket specs, other products,
and information about purchasing brackets.

D1

Drill with 1/4" bit,
then with 1/2" bit

**D2**

A/B

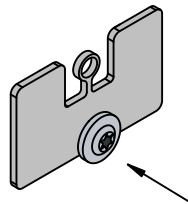
C

D

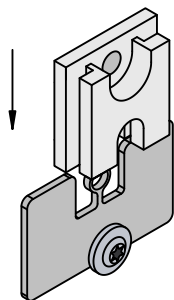
- A. Insert snaptoggle
- B. Orient vertically with cap up
- C. Tighten retainer
- D. Snap off plastic legs

D3

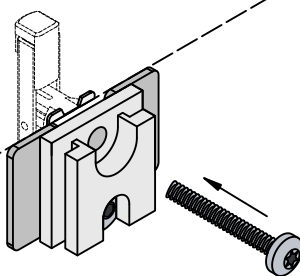
Thread 5/8" bolt into drywall plate

**D4**

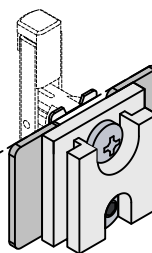
Slide base plate over bolt

**D5**

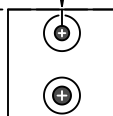
Slide bolt through base plate and
drywall plate and thread into SnapToggle



Completed base plate

**S1**

Drill **through** stud with 1/4" bit,
then with 1/2" bit



Drill **to** stud with 1/2" bit

S2

A/B

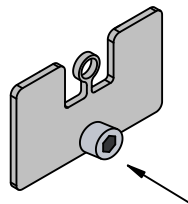
C

D

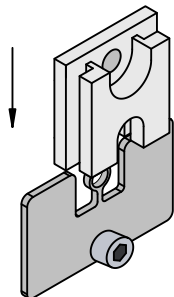
- A. Insert snaptoggle
- B. Orient vertically with cap up
- C. Tighten retainer
- D. Snap off plastic legs

S3

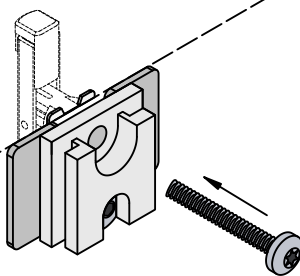
Thread 1" bolt into drywall plate

**S4**

Slide base plate over bolt

**S5**

Slide bolt through base plate and
drywall plate and thread into SnapToggle



Completed base plate

