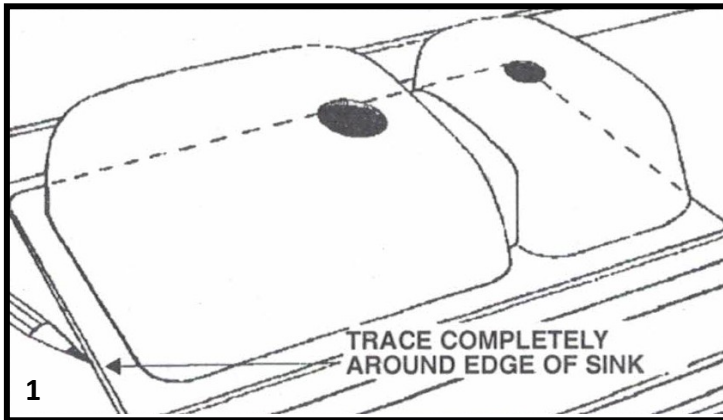
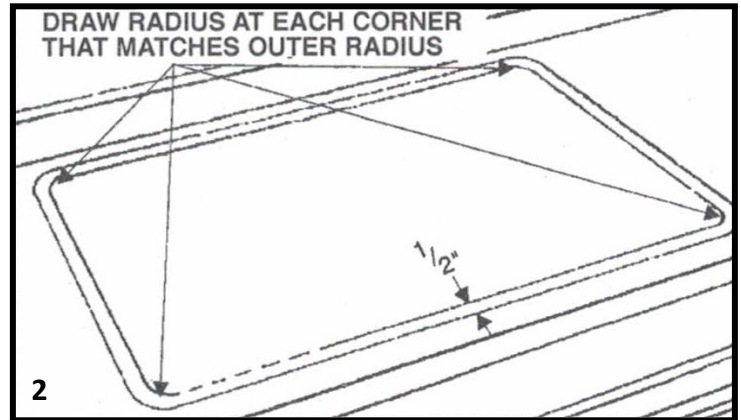


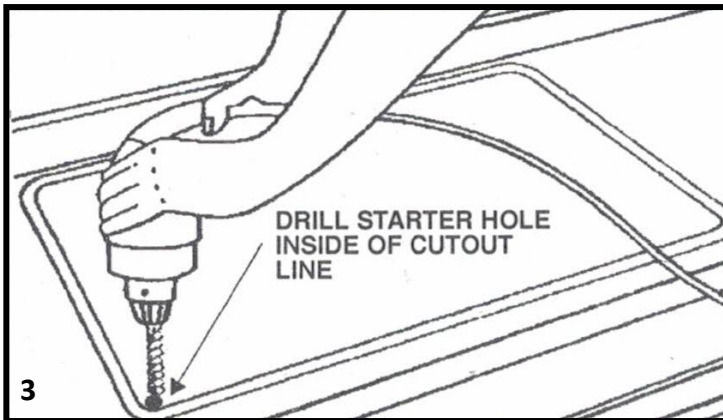
- Read these instructions thoroughly before you begin.
- Always inspect sink closely for damage prior to installing. Do not install a damaged sink.
- Take care when handling vitreous china sinks as they can be heavy.
- Adhere to all local building and plumbing codes.



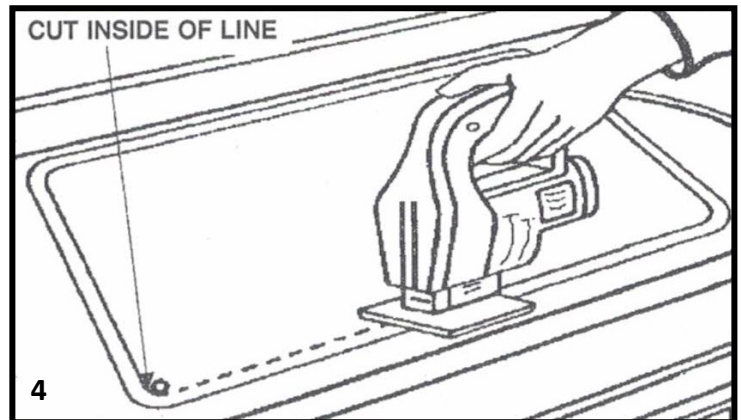
Use the sink as your template. Place sink upside down in the position where sink is to be installed. Pay attention to the backsplash, faucet placement and vanity cabinet constraints. Trace around the sink.



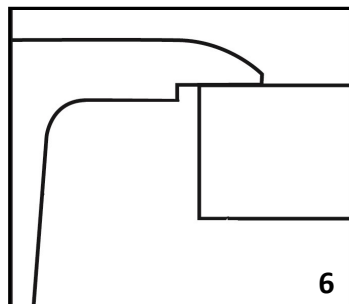
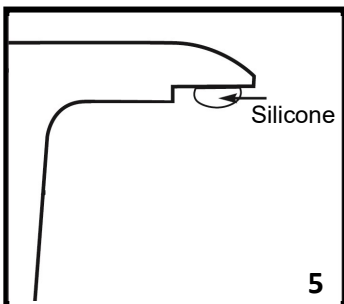
Draw a second line $1/2$ " inside of the outside perimeter line. This will be your cut line.



Drill a starter hole just inside of the cut line.



Use a jigsaw to make the cutout. If you are using a countertop material other than laminate, you will need to use the appropriate router and hard surface template to accomplish the cutout.



Place a bead of a good quality silicone on the underside rim of the sink. Locate the sink correctly in the cutout in the countertop. Place some weight (about 10lbs) in the bowl to provide pressure while the silicone cures. Wipe up excess silicone with a damp rag before it dries.