

Medium-Duty

100 lb. Load Class

1/2" Side Clearance

Max. Drawer Width: 24"



8450FM Soft-Closing Drawer Slides

The 8450FM Full Extension Drawer Slides are designed to quietly bring a drawer to the closed position. The KV Force Management™ series establishes a new standard in Soft-Close functionality by delivering superior performance in dampening action, effortless drawer opening and smooth operation.

Applications

- Wood residential and commercial furniture & cabinetry
- Mobile carts
- Marine and RV cabinetry

Specifications

Model: 8450FM Full Extension Soft-Closing Drawer Slide

Module: Soft-Close

Mounting: Side

Disconnect: Lever Release

Hole Pattern: 32mm and Traditional

Face Frame Mounting: Yes

Type: Ball-Bearing

Travel: Full Extension, Less than Full Extension: 12" = 10.2" Extension

Finish: Anochrome, Ebony Black

Length: 12", 14", 16", 18", 20", 22", 24", 26", 28"

Clearance: .50" + .03" - 0" on each side

Height: 1.79" [45.5mm]

Packaging: Bulk Pack (8450FMB): all sizes – 10 pair per carton
Poly Pack (8450FMP): all sizes – 10 pair per carton

Action: Telescopic

Slide Configuration: Unhanded

Rating

Load: 100 lb. - 8450FM

Max. Drawer Width: 24"

As with all Knappe & Vogt drawer slides, the 8450FM is designed to meet or exceed ANSI performance standards as established by BIFMA, BHMA and KCMA.

Accessories

8403: Rear Mounting Bracket

8404: Front Face Frame Bracket

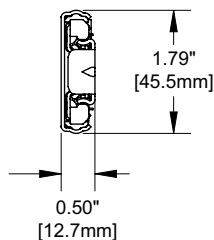
Hardware

#7 x 1/2" Phillips Pan Head

Warranty

Limited Lifetime Warranty

Profile



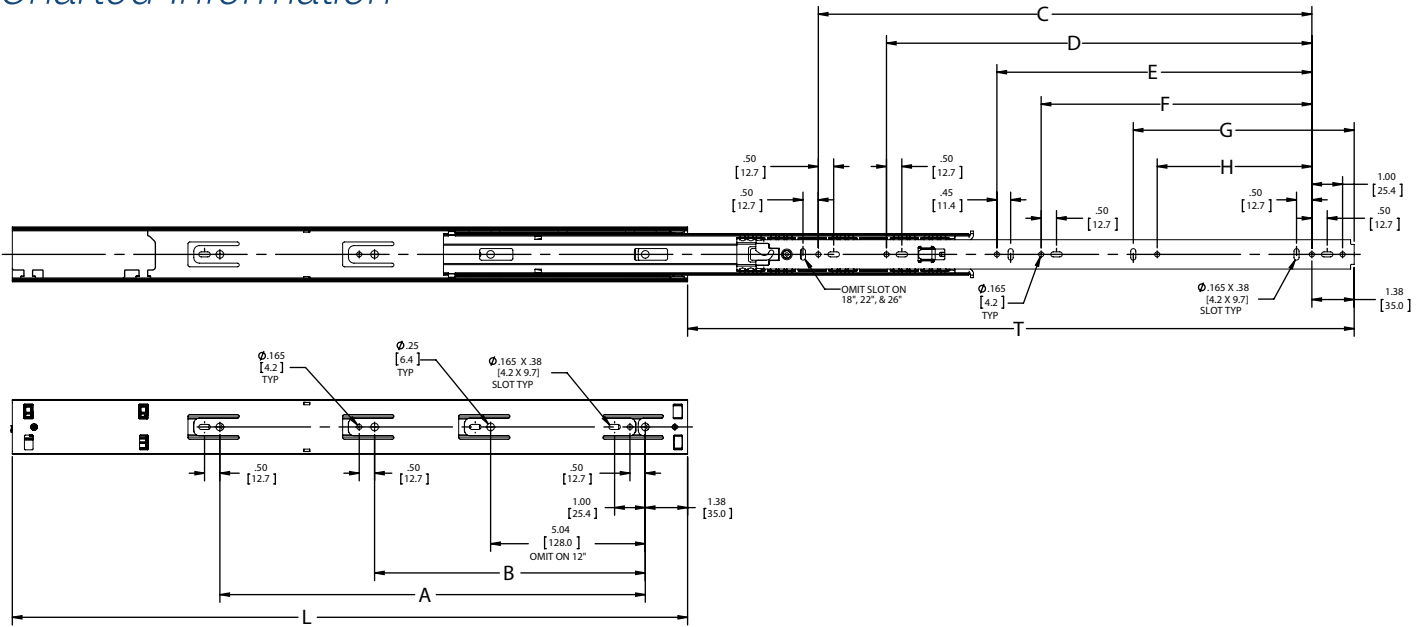
Clearance

1/2" + 1/32" - 0"

.50" + .03" - 0"

12.7mm + .8mm - 0mm

Charted Information



SKU Number*	Slide Size inch/mm	Length inch/mm	Travel inch/mm	A inch/mm	B inch/mm	C inch/mm	D inch/mm	E inch/mm	F inch/mm	G Inch/mm	H Inch/mm
8450FMB 12	12" [300mm]	12.00" [304.8mm]	10.19" [258.8mm]	3.78" [96.0mm]	-	-	-	3.74" [94.9mm]	-	7.08" [179.8mm]	1.26" [32.0mm]
8450FMB 14	14" [350mm]	14.00" [355.6mm]	13.99" [355.3mm]	-	-	-	-	5.54" [140.6mm]	-	7.08" [179.8mm]	1.26" [32.0mm]
8450FMB 16	16" [400mm]	16.00" [406.4mm]	15.99" [406.1mm]	-	8.82" [224.0mm]	-	-	7.54" [191.4mm]	5.04" [128.0mm]	7.08" [179.8mm]	-
8450FMB 18	18" [450mm]	18.00" [457.2mm]	17.99" [456.9mm]	-	8.82" [224.0mm]	12.60" [320.0mm]	-	8.54" [216.8mm]	-	7.08" [179.8mm]	5.04" [128.0mm]
8450FMB 20	20" [500mm]	20.00" [508.0mm]	19.99" [207.7mm]	12.60" [320.0mm]	8.82" [224.0mm]	13.86" [352.0mm]	-	9.54" [242.2mm]	-	7.08" [179.8mm]	5.04" [128.0mm]
8450FMB 22	22" [550mm]	22.00" [558.8mm]	21.99" [558.5mm]	13.86" [352.0mm]	8.82" [224.0mm]	16.38" [416.0mm]	15.12" [384.0mm]	10.54" [267.6mm]	8.82" [224.0mm]	7.08" [179.8mm]	5.04" [128.0mm]
8450FMB 24	24" [600mm]	24.00" [609.6mm]	23.99" [609.3mm]	15.12" [384.0mm]	8.82" [224.0mm]	17.64" [448.0mm]	16.38" [416.0mm]	11.54" [293.0mm]	8.82" [224.0mm]	7.08" [179.8mm]	5.04" [128.0mm]
8450FMB 26	26" [650mm]	26.00" [660.4mm]	25.99" [660.1mm]	17.64" [448.0mm]	8.82" [224.0mm]	20.16" [512.1mm]	17.64" [448.0mm]	12.54" [318.4mm]	8.82" [224.0mm]	7.08" [179.8mm]	5.04" [128.0mm]
8450FMB 28	28" [700mm]	28.00" [711.2mm]	27.99" [710.9mm]	20.16" [512.0mm]	8.82" [224.0mm]	21.42" [544.0mm]	18.90" [480.0mm]	13.54" [343.8mm]	8.82" [224.0mm]	7.08" [179.8mm]	5.04" [128.0mm]

*Also available in Poly Pack (eg, 8450FMP 12)
Less than Full Extension: 12" = 10.2" Extension

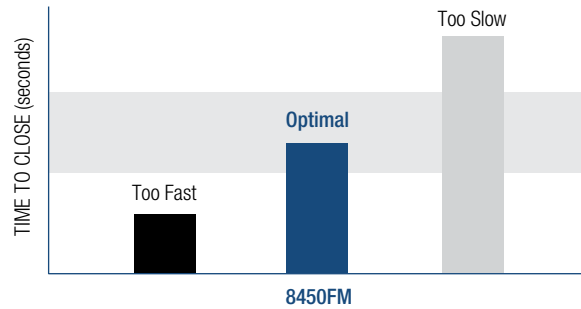
Accessories



8403 Rear Mounting Bracket

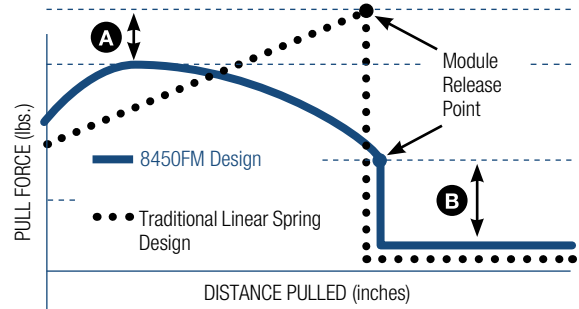
8404 Front Face Frame Bracket

Soft-Close Dampening Effect



- 8450FM soft-close slides close at the optimal speed due to the perfect balance of dampening and spring forces.
- Slides that close too fast have little to no dampening effect.
- Slides that close too slow have poor closure performance.

Soft-Close Module Force Curve



8450FM soft-close slides have:

- A** A lower peak pull force – making them the easiest Soft-Close slides to open.
- B** Significantly less drop off force at the module release point – eliminating the “jerkiness” of traditional linear spring designs.



KNAPE & VOGT.

2700 Oak Industrial Dr. NE
Grand Rapids, MI 49505-6026 USA
1.800.253.1561 | 616.459.3311
Fax: 877.636.3290
www.kv.com

This and other KV literature is available for download at www.kv.com > Resource Library

Knappe & Vogt reserves the right to change product specifications at any time without notice and without incurring responsibility for existing units.

©2021 Knappe & Vogt. KV and the KV logo are trademarks of Knappe & Vogt.

0L2275/0721