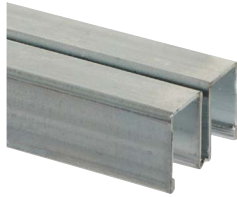


Roll-Ezy Ball-Bearing Track for Large Sliding Glass Doors

Roll-Ezy Ball-Bearing Tracks - STANDARD PACKS



953 Upper T Guide



993 Double Channel Upper Track



995 Shoe



997 Ball-bearing Carrier



999 Lower Track

Standard Packs (1/carton)						
Description	Door Thickness	Width	Height	Length	Pre-coated Steel	Zinc
953 Upper T Guide (Use with wood frame installations.)	1/4"	5/8"	5/8"	144"	953 ZC 144	–
993 Upper Channel (For top and ends of opening. Wide divider maintains door position)	1/4"	15/16"	5/8"	144"	–	993 ZC 144
995 Shoe (Lightly curved bottom for free rolling position on ball-bearings)	1/4"	21/64"	7/16"	144"	–	995 ZC 144
997 Ball-Bearing Carrier (Free rolling balls on 3" centers. Unique design creates two point suspension between shoe and lower track)	1/4"	3/8"	17/32"	144"	–	997 ZC 144
999 Lower Track (Balls ride freely on curved anvil with no contact against sides of lower track)	1/4"	1"	1"	144"	–	999 ZC 144

NOTE: For each foot of opening, use: 1' of upper channel and lower track and shoe (plus 1" per door for overlap), with 1-1/2' of carrier (1-1/2 times door width for each door). Glass is cut 1-1/4" lower than height of opening.