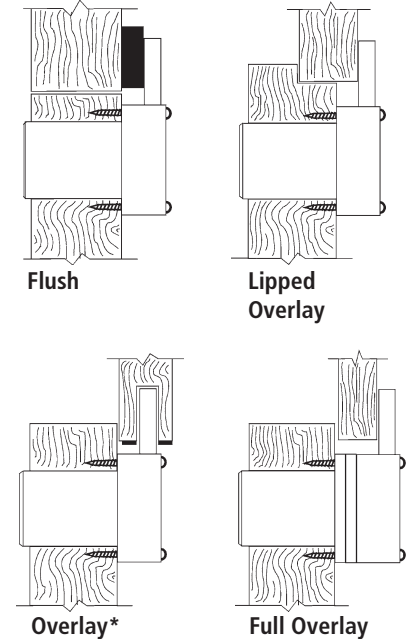


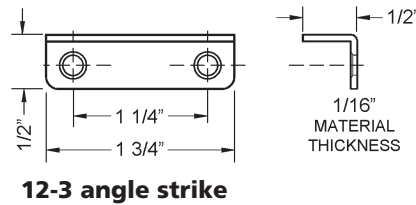
Typical Installation



*Overlay installation is not recommended for particleboard.

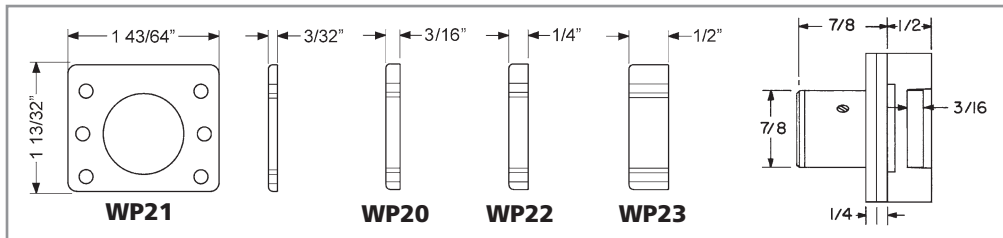
Included Accessories:

- 2 nickel plated keys
- 12-3 angle strike
- 4 lock mounting screws

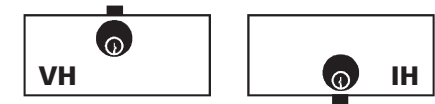


12-3 angle strike

Optional spacers Note: use of spacers and strikes depends on application and material thickness.



**Installation/handling for
key-retaining option**



Drill Guide Cut out this handy drill guide for easy installation.

