

# 100DR | 200DW

## N Series: Deadbolt Door & Drawer Cabinet Locks

**ANSI/BHMA Grade 1 -  
E07121 | E07041  
Woodwork Institute (WI)  
acknowledged product**

### SPECIFICATIONS

**Keying:** Can be keyed together with other N Series locks  
**Rekeyable:** Easily rekeyable via set screw cylinder release mechanism  
**ANSI/BHMA:** Passed ANSI/BHMA A156.11 Grade 1 performance requirements. Equivalent to E07121(100DR) / E07041(200DW).  
**Optional functions:** See also our 100M/200M Series MRI locks and our 100B/200B weather resistant locks  
**Standard function:** Key removable in locked or unlocked position. Standard function locks are non-handed.  
**Key-retaining:** Key removable in locked position only. Specify handing (KL/KR for doors or KI/KV for drawers) when ordering.  
**Long bolt:** Extends bolt 3/4" on both ends. Specify **-LB** option when ordering.  
**US Patent Nos:** 4,899,563; 4,920,774  
**Body:** Zinc die cast  
**Cylinder:** Solid brass, pin tumbler  
**Cylinder length 100DR:** 15/16" or 1-3/8"  
**Cylinder length 200DW:** 15/16", 1-3/8" or 1-5/8"  
**Barrel diameter:** 7/8"  
**Finish:** 26D, US4, 10B or US19 (US19 not available on 100 1-3/8" or 200 1-5/8")  
**Packaged:** Packed 10 per box

### KEYING INFORMATION

**Keyway:** N Series (equivalent to National D4291 4-pin or D4292 5-pin system)  
**Keys:** Includes 2 keys per lock  
**Stock keying:** KD/KA - 4 pin standard  
**Stock KA#:** 101, 103, 107, 915, 51001, 51002, 51003, 51004  
**Masterkeyed:** 5-pin standard  
**Grand masterkeyed:** Available  
**Keyblank 4-pin:** KBN-4-NP (equivalent to NA14, 1069L)  
**Keyblank 5-pin:** KBN-5-NP (equivalent to NA12, 1069LA)  
**Keyblank 5-pin copper plated:** KBN-5B (use with 100M/200M MRI locks)  
**Keying Kit:** N1

### INCLUDED ACCESSORIES

**100DR:** 2 keys, 56-1 bar strike, and lock mounting screws  
**200DW:** 2 keys, 12-3 angle strike, and lock mounting screws

### OPTIONAL ACCESSORIES

**Spacers:** WP20 (3/16" thick), WP21 (3/32" thick), WP22 (1/4" thick), WP23 (1/2" thick)  
**Strikes:** 07S, 12-1, 12-2, 12-3, 12-4, 12-5, 56-1  
**Trim collars:** TR1256  
**Through-bolt hardware:** ETS2 through-bolt plate, ETS2-PL trim pull and ETST2 template  
**Extended (long) bolt:** 15-1-35 (for use with 100DR or 200DW)



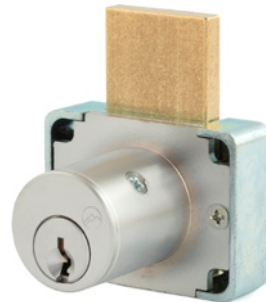
56-1

### 100DR

**Function:** Cabinet door lock  
**ANSI/BHMA No.** E07121  
**Barrel length:** 15/16" or 1-3/8"  
**Long bolt:** Extends overall bolt length by 1-1/2". Specify **-LB** option at time of order.



With long-bolt option



12-3

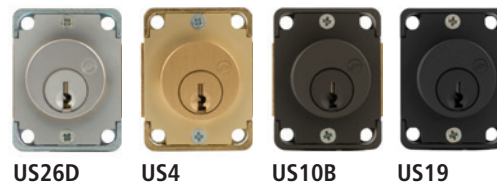
### 200DW

**Function:** Drawer lock  
**ANSI/BHMA No.** E07041  
**Barrel length:** 15/16", 1-3/8" or 1-5/8"  
**Long bolt:** Specify **-LB** option at time of order.



With long-bolt option

### AVAILABLE FINISHES



US26D

US4

US10B

US19

**NEW**

Now in flat black



**WARNING:** This product can expose you to chemicals including chromium, which is known to the State of California to cause cancer and birth defects or other reproductive harm. For more information go to [www.P65Warnings.ca.gov](http://www.P65Warnings.ca.gov).



**OLYMPUS  
LOCK**

# 100DR | 200DW

ANSI/BHMA Grade 1  
E07121 | E07041

## N Series: Deadbolt Door & Drawer Cabinet Locks

**OPTIONAL ACCESSORIES** - See our website for a complete list of optional components.

### Internal plastic spacers

- WP20 3/16" thick plastic spacer
- WP21 3/32" thick plastic spacer
- WP22 1/4" thick plastic spacer
- WP23 1/2" thick plastic spacer

### Strikes

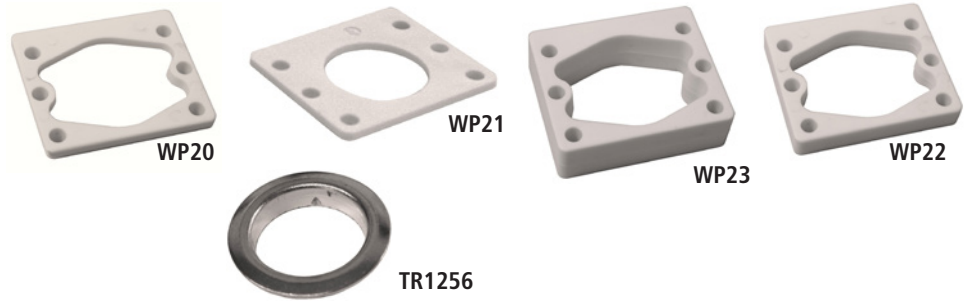
- 07S, 12-1, 12-2, 12-3, 12-4, 12-5, 56-1

### Trim Ring

- TR1256 trim ring

### Extended bolt

- 15-1-35 (see below for installed dimensions)



### Through-bolt plate

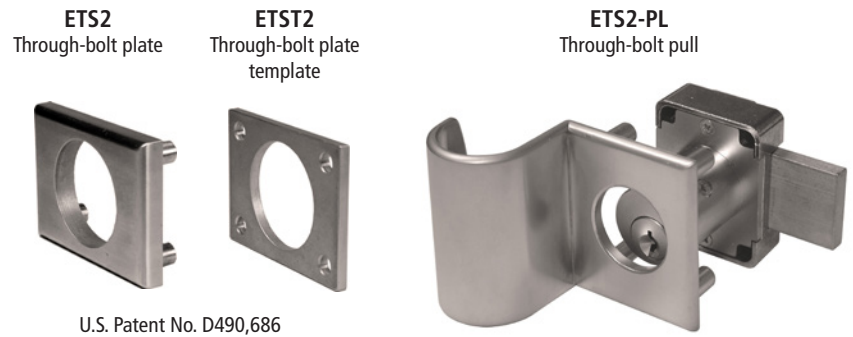
External metal 1/8" or 1/4" through-bolt plate allows for an attractive flush mounting of the cabinet lock face. Available in US3 or US26D finish.

- ETS2-125 through-bolt plate, 1/8" thick
- ETS2-250 through-bolt plate, 1/4" thick

### Through-bolt plate template

Allows for proper mounting hole placement of through-bolt plate. Can be used as a 1/8" shim spacer. Available in US3 and US26D finish.

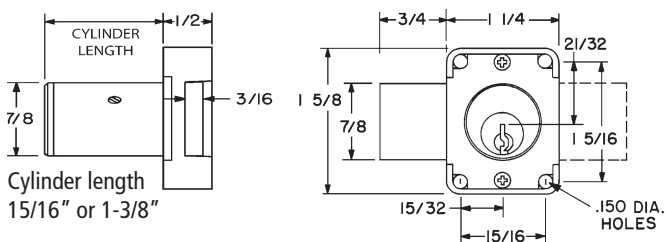
- ETST2 through-bolt plate template



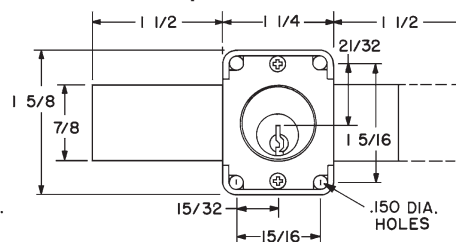
U.S. Patent No. D490,686

## DIMENSIONS

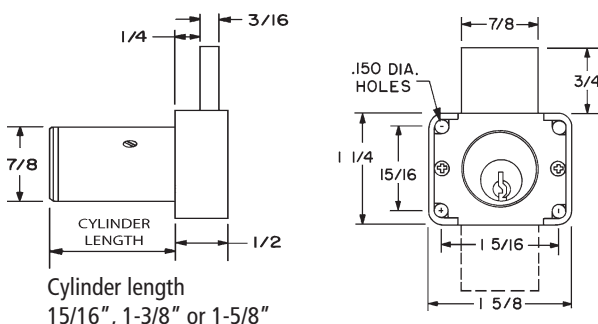
### 100DR Cabinet Door Lock



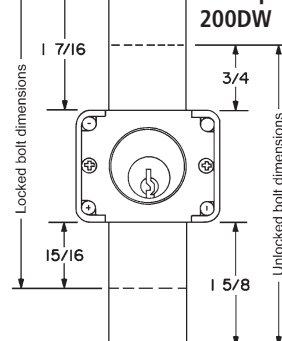
### Extended (long) bolt option for 100DR



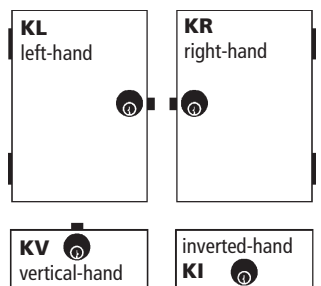
### 200DW Drawer Lock



### Extended (long) bolt option for 200DW



### Key-Retaining Handing Chart



Handing information is only required for key-retaining function. Standard function locks are non-handed.